

Changed Mar 21, 2025 11:36

Reviewed Mar 21, 2025 11:36

Erudus ID d2948eb435c14e3fade1efc6bb5a8e5b

Version 2.0

Status Published

12522

Nissin Soba Cup Teriyaki 8x90g

Soba Teriyaki 8x90g

PRODUCT DESCRIPTION

Instant wheat noodles with Teriyaki seasoning sauce.

Brand	Premier Foods
Manufacturer Product Code	1011021
Product Type	Food
Product Category	Other
Storage Type	Ambient
Erudus ID	d2948eb435c14e3fade1efc6bb5a8e5b
Specification Type	Generic

Inner Component GTIN	5997523315559
Outer Case GTIN	15997523315563



INGREDIENTS

Ingredient Declaration

Noodles 74,2% [**WHEAT** flour, palm oil, salt, flavour enhancer (E621), acidity regulators (sodium carbonates, citric acid), stabiliser (E451), antioxidant (E306)], Seasoning sauce 19,5% [soy sauce (water, **SOYBEAN**, salt, **WHEAT**), sugar, rapeseed oil, dextrose, flavour enhancers (E621, E635), hydrolysed maize protein, spices, colour (plain caramel), chicken meat powder, modified starch, flavourings (contain **CELERY**)], cabbage, carrot, shiitake mushroom, leek.

ALLERGENS

Product Contains:

Celery/Celeriac	Yes	Mustard	May Contain
Cereals Containing Gluten	Yes	Nuts (Tree)	No
Barley	No	Almond nuts	No
Oats	No	Brazil nuts	No
Rye	No	Cashew nuts	No
Wheat (including Spelt and Khorasan)	Yes	Hazelnuts	No
Crustacea	May Contain	Macadamia (Queensland) nuts	No
Eggs	No	Pecan nuts	No
Fish	May Contain	Pistachio nuts	No
Lupin	No	Walnuts	No
Milk	May Contain	Peanuts	No
Molluscs	May Contain	Sesame Seeds	May Contain
		Soybeans	Yes
		Sulphur Dioxide and Sulphites	No

Risk Source:

Additional Allergen Information

For allergens, including cereals containing gluten, see ingredients in Bold. May also contain traces of crustaceans, fish, milk, molluscs, mustard and sesame.

SUPPLEMENTARY INGREDIENT INFORMATION

Palm Oil	Yes
Hydrogenated Vegetable Oil/Fat	No
GM Protein/DNA	No

ADDITIVES

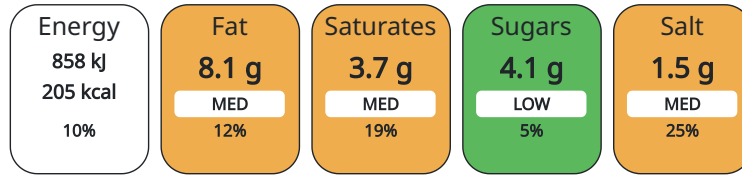
<i>Product Contains:</i>			
Artificial Antioxidants	Yes	Artificial Flavourings	Yes
Artificial Colours	Yes	Artificial Preservatives	No
Artificial Flavour Enhancers	Yes	Artificial Sweeteners	No

Vegan Diet	No	Vegetarian Diet	No
Halal Diet	No	Kosher Diet	No

DIET SUITABILITY

NUTRITIONAL INFORMATION AS SOLD

Each 100g/ml portion contains:



of your reference intake.

Typical values per 100g/ml : Energy 205kcal / 858kJ

Nutrient	per 100g	RI per 100g	per 180g serving	RI per 180g serving
Energy (kJ)	858 kJ	10%	1544.4	18%
Energy (kcal)	205 kcal	10%	369	18%
Fat	8.1 g	12%	14.58 g	21%
of which Saturates	3.7 g	19%	6.66 g	33%
Carbohydrate	26.3 g	10%	47.34 g	18%
of which Sugars	4.1 g	5%	7.38 g	8%
Protein	5.5 g	11%	9.9 g	20%
Salt	1.5 g	25%	2.7 g	45%

Serving Size	180 g
---------------------	-------

HANDLING & STORAGE INFORMATION

Directions For Use

Preparation instruction: (1) Remove the cap, lid and sachet. Fill cup with boiling water until the inner line. (2) Close cap and let stand for 3 minutes. (3) Carefully, drain the water through the openings on the cap. ATTENTION: Please also note the drawing on the aluminium lid. (4) Add the content of sachet and stir well. Ready!

Storage Instructions

Store at ambient temperature and keep it away from direct sun light and humidity.

Shelf Life from Time of Production	365 Days
-------------------------------------------	----------

ACCREDITATIONS/ CERTIFICATIONS/ ASSURANCE SCHEMES ORIGIN

BRCGS Certified	IFS Food Standard
Roundtable of Sustainable Palm Oil (RSPO)	Other Accreditation
Product Country of Origin	Hungary
Origin of the Primary Ingredient	

PRODUCT CHARACTERISTICS

Standards Testing

	Do you undertake trend analysis of microbiological results?	Yes	Is shelf life testing undertaken?	Yes
CONFIGURATION	Case Configuration		Inner Pack Configuration	
	Total Quantity of Inner Components in Outer Case	8 Units		
PRODUCT WEIGHTS	Inner Component			
	Variable Weight Consumer Item	No		
	Inner Component Weight	90 g		
	e mark	Yes		
	Outer Case			
	Outer Case Gross Weight	1.07 kg		
	Outer Case Net Weight	0.72 kg		
PRODUCT DIMENSIONS	Inner Component			
	Inner Component Depth	96 mm		
	Inner Component Width	96 mm		
	Inner Component Height	107 mm		
	Outer Case			
	Outer Case Depth	399 mm		
	Outer Case Width	201 mm		
	Outer Case Height	119 mm		
PALLET INFORMATION	Quantity of Cases Per Pallet Layer	15 Cases	Pallet Height	1.23 MTR
	Quantity of Layers Per Pallet	9 Layers	Pallet Gross Weight	174.59 kg
	Quantity of Cases Per Pallet	135 Cases		
OTHER INFORMATION CONTACT INFORMATION	Address	Premier Foods Premier Foods, Premier House Centrium Business Park, Griffiths Way AL1 2RE St Albans England specifications_foodservice@premierfoods.co.uk	Technical	Nicola Ratcliffe nicola.ratcliffe@premierfoods.co.uk Business Unit Coordinator
			Complaints	Consumer Relations Team contactus@premierfoodshelpline.co.uk Customer Care

The information on the [Erudus System](#) has been supplied by the manufacturers of the products and, whilst the owners of the Erudus System take steps to ensure the information is regularly updated, they give no warranty and no guarantee that the information is accurate. Product information and ingredients may change, please always read product labels carefully in addition to using the information provided by Erudus.

We do not accept liability for any inaccuracies or incorrect information contained on this site.
Please visit <http://www.erudus.com/terms-and-conditions> for full terms and conditions.