

Changed Jan 19, 2024 10:14

Reviewed Jan 19, 2024 10:14

Erudus ID 879f71d578184873a838f7b63c952b93

Version 2.0

Status Published

12524

Milfresh Superior Granulated Hot Chocolate

Granulated Instant Hot Chocolate, Made With Real Skimmed Milk For Dispense And Vending Machines
10x1kg

PRODUCT DESCRIPTION

Granulated Instant Hot Chocolate, made with real skimmed milk for Dispense and Vending Machines

Brand	Aimia Foods Limited
Manufacturer Product Code	MILSUPER
Product Type	Drink
Product Category	Hot Chocolate & Malted Drinks
Storage Type	Ambient
Erudus ID	879f71d578184873a838f7b63c952b93
Specification Type	Drinks

Inner Component GTIN	5060113914019
Outer Case GTIN	05060113914026



INGREDIENTS

Ingredient Declaration

Sugar, Whey Permeate (MILK), Fat Reduced Cocoa Powder (12%), Coconut Oil, Skimmed MILK Powder, Dried Glucose Syrup, Stabilisers (guar gum, E340ii, E466, E452i), Flavouring, Salt, Anti-Caking Agent (E551), MILK Proteins, Emulsifier (E471).

ALLERGENS

Product Contains:

Celery/Celeriac	No	Mustard	No
Cereals Containing Gluten	No	Nuts (Tree)	No
Barley	No	Almond nuts	No
Oats	No	Brazil nuts	No
Rye	No	Cashew nuts	No
Wheat (including Spelt and Khorasan)	No	Hazelnuts	No
Crustacea	No	Macadamia (Queensland) nuts	No
Eggs	No	Pecan nuts	No
Fish	No	Pistachio nuts	No
Lupin	No	Walnuts	No
Milk	Yes	Peanuts	No
Molluscs	No	Sesame Seeds	No
		Soybeans	No
		Sulphur Dioxide and Sulphites	No

SUPPLEMENTARY
INGREDIENT
INFORMATION

Palm Oil	Yes
Hydrogenated Vegetable Oil/Fat	No
GM Protein/DNA	No

ADDITIVES

Product Contains:

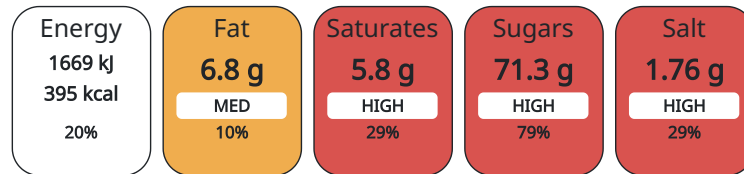
Artificial Antioxidants	No	Artificial Flavourings	No
Artificial Colours	No	Artificial Preservatives	No
Artificial Flavour Enhancers	No	Artificial Sweeteners	No

DIET SUITABILITY

Vegan Diet	No	Vegetarian Diet	Suitable for
Halal Diet	No	Kosher Diet	No

NUTRITIONAL
INFORMATION AS
SOLD

Each 100g/ml portion contains:



of your reference intake.

Typical values per 100g/ml : Energy 395kcal / 1669kJ

Nutrient	per 100g	RI per 100g
Energy (kJ)	1669 kJ	20%
Energy (kcal)	395 kcal	20%
Fat	6.8 g	10%
of which Saturates	5.8 g	29%
Carbohydrate	76.3 g	29%
of which Sugars	71.3 g	79%
Protein	5.1 g	10%
Salt	1.76 g	29%

Number of Servings 50 Servings

HANDLING &
STORAGE
INFORMATION

Directions For Use

For use in vending: 20g per 7oz cup (195ml) 25g per 9oz cup (250ml) 30g per 12oz cup (330ml)

Storage Instructions

Store in a cool, dry place away from sunlight.

Shelf Life from Time of Production 547 Days

ACCREDITATIONS/
CERTIFICATIONS/
ASSURANCE
SCHEMES
ORIGIN

BRCGS Certified Other Accreditation

Product Country of Origin United Kingdom

Additional Origin Details

N/A

Origin of the Primary Ingredient

PRODUCT
CHARACTERISTICS

Standards Testing

CONFIGURATION

Case Configuration

Inner Pack Configuration

Variable Inner Components in Outer Case	No
Total Quantity of Inner Components in Outer Case	10 Units
Is the Outer Case Splittable?	Yes

PRODUCT WEIGHTS

Inner Component	
Inner Component Weight	1 kg
e mark	Yes
Outer Case	
Outer Case Gross Weight	10.5 kg
Outer Case Net Weight	10 kg

PRODUCT DIMENSIONS

Inner Component	
Inner Component Depth	90 mm
Inner Component Width	125 mm
Inner Component Height	250 mm
Outer Case	
Outer Case Depth	468 mm
Outer Case Width	234 mm
Outer Case Height	206 mm

PALLET INFORMATION

Quantity of Cases Per Pallet Layer	10 Cases	Pallet Height	1.6 MTR
Quantity of Layers Per Pallet	7 Layers	Pallet Gross Weight	762 kg
Quantity of Cases Per Pallet	70 Cases		

PACKAGING

Inner Component Packaging						
Type	Materials	Weight	Recycled Material %	Recyclable	Returnable	Composite
Poly Treated PET/PE	Plastic / OPP (Oriented Polypropylene)	11.98 g		No		
Outer Case Packaging						
Type	Materials	Weight	Recycled Material %	Recyclable	Returnable	Composite
Case	Paper/Cardboard / Carton Board	397 g		Yes	No	
Label	Paper/Cardboard / Paper	1.7 g		Yes		
Transport Packaging						
Type	Materials	Weight	Recycled Material %	Recyclable	Returnable	Composite
Pallet	Wood	25000 g		Yes	Yes	
Layer Card	Paper/Cardboard / Corrugated	403 g		Yes	No	
Pallet Wrap	Plastic / PE (Polyethylene)	280 g		No		

MARKETING INFORMATION

Marketing Description
 Milfresh Superior delivers a sublimely indulgent hot chocolate hot chocolate drink. With a rich cocoa and a dash of skimmed milk for a creamy chocolate flavour people will love.

OTHER INFORMATION

Manufacturer Comments
 N/A

CONTACT
INFORMATION

Address

Aimia Foods Limited
Penny Lane
WA11 0QZ
Haydock
Merseyside
England

heena.jhala@aimiafoods.com
01942 272900

Technical

Duncan Evanson
duncan.evanson@aimiafoods.com
01942272900
Customer Quality Manager

Complaints

Louise Brown
customer.services@aimiafoods.com
01942 408600
Customer Services Manager

The information on the [Erudus System](#) has been supplied by the manufacturers of the products and, whilst the owners of the Erudus System take steps to ensure the information is regularly updated, they give no warranty and no guarantee that the information is accurate. Product information and ingredients may change, please always read product labels carefully in addition to using the information provided by Erudus.

We do not accept liability for any inaccuracies or incorrect information contained on this site.
Please visit <http://www.erudus.com/terms-and-conditions> for full terms and conditions.