

12576

Walkers Max Sizzling Flame Grilled Steak Crisps 50g x 24

Walkers Max Sizzling Flame Grilled Steak Crisps 50g 24x50g

PRODUCT DESCRIPTION

Walkers Max Crisps Sizzling Flame Grilled Steak 50g

Brand	Walkers Snacks Limited (PepsiCo)
Manufacturer Product Code	300002162
Product Type	Food
Product Category	Crisps & Snacks
Storage Type	Ambient
Erudus ID	8f324775a9184adbac28a3dd10919e6f
Specification Type	Legacy



Inner Component GTIN	05000328532905
Outer Case GTIN	05000328562254



INGREDIENTS

Ingredient Declaration

Potatoes, Vegetable Oils (Sunflower, Rapeseed, in varying proportions), Flame Grilled Steak Seasoning [Flavourings, Salt, Onion Powder, Sugar, Potassium Chloride, Smoked Salt, Colour (Paprika Extract)], Antioxidants (Rosemary Extract, Ascorbic Acid, Tocopherol Rich Extract, Citric Acid).

ALLERGENS

Product Contains:

Celery/Celery	May Contain	Mustard	May Contain
Cereals Containing Gluten	May Contain	Nuts (Tree)	No
Barley	May Contain	Almond nuts	No
Oats	No	Brazil nuts	No
Rye	No	Cashew nuts	No
Wheat (including Spelt and Khorasan)	May Contain	Hazelnuts	No
Crustacea	No	Macadamia (Queensland) nuts	No
Eggs	No	Pecan nuts	No
Fish	No	Pistachio nuts	No
Lupin	No	Walnuts	No
Milk	May Contain	Peanuts	No
Molluscs	No	Sesame Seeds	No
		Soybeans	May Contain
		Sulphur Dioxide and Sulphites	No

Risk Source:

SUPPLEMENTARY
INGREDIENT
INFORMATION

Hydrogenated Vegetable Oil/Fat	Yes
GM Protein/DNA	No

ADDITIVES

Product Contains:

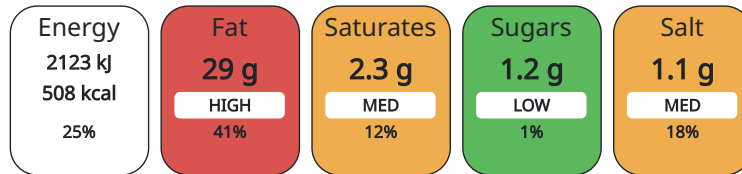
Artificial Antioxidants	Yes
Artificial Colours	No

DIET SUITABILITY

Suitable for Coeliacs	No	Halal Diet	No
Kosher Diet	No	Vegetarian Diet	Suitable for
Vegan Diet	No		

NUTRITIONAL
INFORMATION

Each 100g/ml portion contains:



of your reference intake.

Typical values per 100g/ml : Energy 508kcal / 2123kJ

Nutrient	per 100g/ml	RI per 100g/ml
Energy (kJ)	2123 kJ	25%
Energy (kcal)	508 kcal	25%
Fat	29 g	41%
of which Saturates	2.3 g	12%
Carbohydrate	52 g	20%
of which Sugars	1.2 g	1%
Fibre	4.4 g	
Protein	6.9 g	14%
Salt	1.1 g	18%

HFSS (HIGH IN
FAT, SALT AND
SUGAR)
HANDLING &
STORAGE
INFORMATION

HFSS Status	Yes
-------------	-----

Directions For Use

This pack contains 1 serving

Storage Instructions

Store in a cool dry place

Shelf Life from Time of Production	112 Days
------------------------------------	----------

ORIGIN

Product Country of Origin	United Kingdom
---------------------------	----------------

PRODUCT
CHARACTERISTICS
CONFIGURATION

Standards Testing	
Case Configuration	Inner Pack Configuration
Total Quantity of Inner Components in Outer Case	24 Units

PRODUCT WEIGHTS

Inner Component	
Variable Weight Consumer Item	No
Inner Component Weight	50 g
Outer Case	
Outer Case Gross Weight	1.52 kg
Outer Case Net Weight	1.2 kg

PRODUCT DIMENSIONS

Inner Component	
Inner Component Depth	450 mm
Inner Component Width	152 mm
Inner Component Height	210 mm
Outer Case	
Outer Case Depth	300 mm
Outer Case Width	399 mm
Outer Case Height	251 mm

PALLET INFORMATION

Quantity of Cases Per Pallet Layer	10 Cases
Quantity of Layers Per Pallet	9 Layers
Quantity of Cases Per Pallet	90 Cases

Pallet Height 2.26 MTR

OTHER INFORMATION CONTACT INFORMATION

Address
Walkers Snacks Limited (PepsiCo)
450 South Oak Way
Green Park
RG2 6UW
Reading
United Kingdom

karthick.s@pepsico.com
07824608485

Commercial
Olivia.Greenaway@pepsico.com
olivia.greenaway@pepsico.com

The information on the [Erudus System](#) has been supplied by the manufacturers of the products and, whilst the owners of the Erudus System take steps to ensure the information is regularly updated, they give no warranty and no guarantee that the information is accurate. Product information and ingredients may change, please always read product labels carefully in addition to using the information provided by Erudus.

We do not accept liability for any inaccuracies or incorrect information contained on this site.
Please visit <http://www.erudus.com/terms-and-conditions> for full terms and conditions.