

Changed Jul 30, 2024 03:45

Reviewed Jul 30, 2024 03:45

Erudus ID 8e1be46218d644d19412042da024bd7e

Version 1.0

Status Published

12585

# Cheetos Twisted Sweet & Spicy Grab Bag Crisps 30x38g

Cheetos Twisted Sweet & Spicy Grab Bag Crisps 30x38g

## PRODUCT DESCRIPTION

Sweet & Spicy Flamin' Hot Flavour corn puffs

Brand	<a href="#">Walkers Snacks Limited (PepsiCo)</a>
Manufacturer Product Code	300043564
Product Type	Food
Product Category	Crisps & Snacks
Storage Type	Ambient
Erudus ID	8e1be46218d644d19412042da024bd7e
Specification Type	Generic



Inner Component GTIN 05000328028699

Outer Case GTIN 05000328028712



## INGREDIENTS

### Ingredient Declaration

Corn (Maize), Rapeseed Oil, Flamin' Hot Flavour [Sugar, Acidity Regulators (Sodium Acetates, Malic Acid), Flavour Enhancers (Monosodium Glutamate, Disodium 5'-ribonucleotide), Flavouring (contains **Soya**, **Wheat**), Fructose, Salt, Onion Powder, Hydrolysed Vegetable Protein (contains **Soya**), Garlic Powder, **Soybean** Derivatives, **Wheat** Derivatives, Colours (Paprika Extract, Sulphite Ammonia Caramel)]

ALLERGENS

Product Contains:

Celery/Celeriac	May Contain
Cereals Containing Gluten	Yes
Barley	May Contain
Oats	No
Rye	No
Wheat (including Spelt and Khorasan)	Yes
Crustacea	No
Eggs	No
Fish	No
Lupin	No
Milk	May Contain
Molluscs	No

Mustard	May Contain
Nuts (Tree)	No
Almond nuts	No
Brazil nuts	No
Cashew nuts	No
Hazelnuts	No
Macadamia (Queensland) nuts	No
Pecan nuts	No
Pistachio nuts	No
Walnuts	No
Peanuts	No
Sesame Seeds	No
Soybeans	Yes
Sulphur Dioxide and Sulphites	No

Risk Source:

Allergen Statement On Pack

Contains: See highlighted ingredients

Additional Allergen Information

May Contain: Milk, Barley, Gluten, Celery, Mustard

SUPPLEMENTARY  
INGREDIENT  
INFORMATION  
ADDITIVES

GM Protein/DNA	No
----------------	----

Product Contains:

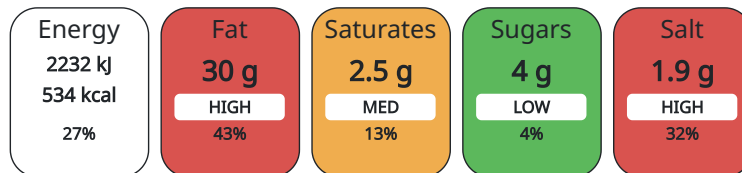
Artificial Preservatives	No
--------------------------	----

DIET SUITABILITY

Vegetarian Diet	Suitable for
-----------------	--------------

NUTRITIONAL  
INFORMATION AS  
SOLD

Each 100g/ml portion contains:



of your reference intake.

Typical values per 100g/ml : Energy 534kcal / 2232kJ

Nutrient	per 100g	RI per 100g	per 38g serving	RI per 38g serving
Energy (kJ)	2232 kJ	27%	848.16	10%
Energy (kcal)	534 kcal	27%	202.92	10%
Fat	30 g	43%	11.4 g	16%
of which Saturates	2.5 g	13%	0.95 g	5%
Carbohydrate	60 g	23%	22.8 g	9%
of which Sugars	4 g	4%	1.52 g	2%
Fibre	1.1 g		0.42 g	
Protein	5.5 g	11%	2.09 g	4%
Salt	1.9 g	32%	0.72 g	12%

	<b>Serving Size</b>	38 g	
	<b>Serving Size Description</b>	This pack contains 1 serving.	
	<b>Number of Servings</b>	1 Servings	
	<b>Source of Nutritional Information</b>	Manufacturers analysis	
HFSS (HIGH IN FAT, SALT AND SUGAR)	<b>HFSS Status</b>	Yes	
	<b>HFSS Score</b>	15	
HANDLING & STORAGE INFORMATION	<b>Directions For Use</b>	This pack contains 1 serving	
	<b>Storage Instructions</b>	Store in a cool, dry place	
	<b>Shelf Life from Time of Production</b>	140 Days	
ORIGIN	<b>Product Country of Origin</b>	United Kingdom	
	<b>Origin of the Primary Ingredient</b>		
PRODUCT CHARACTERISTICS CONFIGURATION	Standards Testing		
	Case Configuration		Inner Pack Configuration
	<b>Variable Inner Components in Outer Case</b>	No	
	<b>Total Quantity of Inner Components in Outer Case</b>	30 Units	
	<b>Is the Outer Case Splittable?</b>	No	
PRODUCT WEIGHTS	Inner Component		
	<b>Variable Weight Consumer Item</b>	No	
	<b>Inner Component Weight</b>	38 g	
	Outer Case		
	<b>Outer Case Gross Weight</b>	1.49 kg	
	<b>Outer Case Net Weight</b>	1.14 kg	
PRODUCT DIMENSIONS	Inner Component		
	<b>Inner Component Depth</b>	330 mm	
	<b>Inner Component Width</b>	159 mm	
	<b>Inner Component Height</b>	215 mm	
	Outer Case		
	<b>Outer Case Depth</b>	393 mm	
	<b>Outer Case Width</b>	293 mm	
	<b>Outer Case Height</b>	313 mm	
PALLET INFORMATION	<b>Quantity of Cases Per Pallet Layer</b>	10 Cases	<b>Pallet Height</b> 1.97 MTR
	<b>Quantity of Layers Per Pallet</b>	9 Layers	<b>Pallet Gross Weight</b> 73.08 kg
	<b>Quantity of Cases Per Pallet</b>	90 Cases	
OTHER INFORMATION			

CONTACT  
INFORMATION

**Address**

Walkers Snacks Limited (PepsiCo)  
450 South Oak Way  
Green Park  
RG2 6UW  
Reading  
United Kingdom

karthick.s@pepsico.com  
07824608485

**Commercial**

Olivia.Greenaway@pepsico.com  
olivia.greenaway@pepsico.com

The information on the [Erudus System](#) has been supplied by the manufacturers of the products and, whilst the owners of the Erudus System take steps to ensure the information is regularly updated, they give no warranty and no guarantee that the information is accurate. Product information and ingredients may change, please always read product labels carefully in addition to using the information provided by Erudus.

We do not accept liability for any inaccuracies or incorrect information contained on this site.  
Please visit <http://www.erudus.com/terms-and-conditions> for full terms and conditions.