

Changed Mar 09, 2026 14:42

Reviewed Mar 09, 2026 14:42

Erudus ID af768454885b4b05a69c445df4fa8f3e

Version 2.0

Status Published

12612

Barista Caramel Latte PMP 12x250ml

Sterilised Milk Drink With Coffee Extract And Caramel Flavour 12x0.26kg

PRODUCT DESCRIPTION

Sterilised milk drink with coffee extract and caramel flavour

Brand	Friesland Campina UK Ltd
Manufacturer Product Code	1160430
Product Type	Drink
Product Category	Milkshakes & Flavoured Milk
Storage Type	Ambient
Erudus ID	af768454885b4b05a69c445df4fa8f3e
Specification Type	Drinks



Inner Component GTIN	5414150410759
Outer Case GTIN	5414150410742



INGREDIENTS

Ingredient Declaration

Semi skimmed MILK, skimmed MILK, water, sugar, instant coffee (0.7%), natural flavouring, acidity regulator: potassium carbonate.

ALLERGENS

Product Contains:

Celery/Celeriac	No	Mustard	No
Cereals Containing Gluten	No	Nuts (Tree)	No
Barley	No	Almond nuts	No
Oats	No	Brazil nuts	No
Rye	No	Cashew nuts	No
Wheat (including Spelt and Khorasan)	No	Hazelnuts	No
Crustacea	No	Macadamia (Queensland) nuts	No
Eggs	No	Pecan nuts	No
Fish	No	Pistachio nuts	No
Lupin	No	Walnuts	No
Milk	Yes	Peanuts	No
Molluscs	No	Sesame Seeds	No
		Soybeans	No
		Sulphur Dioxide and Sulphites	No

SUPPLEMENTARY
INGREDIENT
INFORMATION

Palm Oil	No
Hydrogenated Vegetable Oil/Fat	No
GM Protein/DNA	No

ADDITIVES

Product Contains:

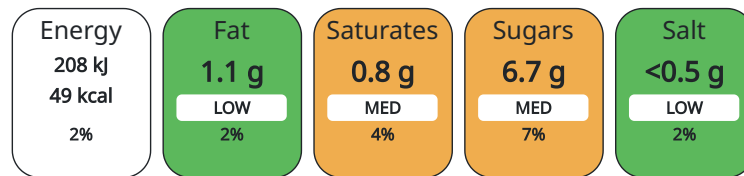
Artificial Antioxidants	No	Artificial Flavourings	No
Artificial Colours	No	Artificial Preservatives	No
Artificial Flavour Enhancers	No	Artificial Sweeteners	No

DIET SUITABILITY

Vegan Diet	No	Vegetarian Diet	Suitable for
Halal Diet	No	Kosher Diet	No

NUTRITIONAL
INFORMATION AS
SOLD

Each 100g/ml portion contains:



of your reference intake.

Typical values per 100g/ml : Energy 49kcal / 208kJ

Nutrient	per 100ml	RI per 100ml	per 250ml serving	RI per 250ml serving
Energy (kJ)	208 kJ	2%	520	6%
Energy (kcal)	49 kcal	2%	122.5	6%
Fat	1.1 g	2%	2.75 g	4%
of which Saturates	0.8 g	4%	2 g	10%
Carbohydrate	7 g	3%	17.5 g	7%
of which Sugars	6.7 g	7%	16.75 g	19%
Protein	2.6 g	5%	6.5 g	13%
Salt	0.1 g	2%	0.25 g	4%

Serving Size 250 ml

HFSS (HIGH IN
FAT, SALT AND
SUGAR)

HFSS Status No

HANDLING &
STORAGE
INFORMATION

Directions For Use

Shake before use. Best served chilled

Storage Instructions

4 - 24 °C Closed pack Products are best stored in original unopened packaging under clean, cool and dry conditions, out of direct sunlight and separated from strongly odorous materials.

Storage Instructions After Opening

Once opened, keep in the refrigerator and consume within 3 days

Shelf Life from Time of Production 180 Days

Shelf Life From Opening 3 Days

ACCREDITATIONS/
CERTIFICATIONS/
ASSURANCE
SCHEMES

FSSC 22000

ORIGIN

Product Country of Origin Belgium

Origin of the Primary Ingredient European Union

PRODUCT CHARACTERISTICS CONFIGURATION

Standards Testing

Case Configuration

Inner Pack Configuration

Total Quantity of Inner Components in Outer Case 12 Units

PRODUCT WEIGHTS

Inner Component

Inner Component Weight 0.26 kg
Inner Component Volume 250 ml
Net Drained Weight 0.26 kg

Outer Case

Outer Case Gross Weight 3.28 kg
Outer Case Net Weight 3.11 kg

PRODUCT DIMENSIONS

Inner Component

Inner Component Depth 55 mm
Inner Component Width 55 mm
Inner Component Height 134 mm

Outer Case

Outer Case Depth 215 mm
Outer Case Width 162 mm
Outer Case Height 136 mm

PALLET INFORMATION

Quantity of Cases Per Pallet Layer 29 Cases
Quantity of Layers Per Pallet 7 Layers
Quantity of Cases Per Pallet 203 Cases

Pallet Height 1.11 MTR
Pallet Gross Weight 693 kg

PACKAGING

Inner Component Packaging

Type	Materials	Weight	Recycled Material %	Recyclable	Returnable	Composite
Can	Aluminium	10.2 g				

Outer Case Packaging

Type	Materials	Weight	Recycled Material %	Recyclable	Returnable	Composite
Shrink Wrap	Plastic	13.695 g				
Case	Paper/Cardboard	27.34 g				

Transport Packaging

Type	Materials	Weight	Recycled Material %	Recyclable	Returnable	Composite
Pallet Wrap	Plastic	167 g				
Pallet	Wood	28000 g				

OTHER INFORMATION CONTACT INFORMATION

Intrastat/Taric Code 22029995

Identification/Health Marks BE M325 EC

Address

Friesland Campina UK Ltd
 1st Floor, The Peak
 5 Wilton Road
 SW1V 1AN
 London
 England

Technical

Tammy Summers
 Tammy.Summers@frieslandcampina.com
 QA/RA manager UK

haleem.sadiq@frieslandcampina.com

The information on the [Erudus System](#) has been supplied by the manufacturers of the products and, whilst the owners of the Erudus System take steps to ensure the information is regularly updated, they give no warranty and no guarantee that the information is accurate. Product information and ingredients may change, please always read product labels carefully in addition to using the information provided by Erudus.

We do not accept liability for any inaccuracies or incorrect information contained on this site.
Please visit <http://www.erudus.com/terms-and-conditions> for full terms and conditions.