

Changed Mar 12, 2026 12:15

Reviewed Mar 12, 2026 12:15

Erudus ID 3e1ef8fffb5a48fa8ff713bcd535d2dd

Version 3.0

Status Published

12613

McVitie's Club Layers - Orange 24 x 39g

McVitie's Club Layers - Orange 24x39g

PRODUCT DESCRIPTION

Milk Chocolate covered wafer bar with an orange flavoured cream filling

Brand	Pladis (UK) Ltd
Manufacturer Product Code	45865
Product Type	Food
Product Category	Biscuits, Wafers and Crackers
Storage Type	Ambient
Erudus ID	3e1ef8fffb5a48fa8ff713bcd535d2dd
Specification Type	Bakery Products

Inner Component GTIN 5000168007298

Outer Case GTIN 5000168007281



INGREDIENTS

Ingredient Declaration

Milk Chocolate (66%) [Sugar, Dried Whole Milk, Cocoa Butter, Cocoa Mass, Emulsifier (Soya Lecithin), Salt, Flavouring], Sugar, Palm Oil, Wheat Flour, Dried Whole Milk, Dried Skimmed Milk, Dried Whey (Milk), Lactose (Milk), Starch, Orange Flavouring, Emulsifier (Soya Lecithin), Salt, Acid (Citric Acid), Colour (Paprika Extract), Flavouring, Dried Egg White

ALLERGENS

Product Contains:

Celery/Celeriac	No	Mustard	No
Cereals Containing Gluten	Yes	Nuts (Tree)	May Contain
Barley	No	Almond nuts	May Contain
Oats	No	Brazil nuts	May Contain
Rye	No	Cashew nuts	May Contain
Wheat (including Spelt and Khorasan)	Yes	Hazelnuts	May Contain
Crustacea	No	Macadamia (Queensland) nuts	May Contain
Eggs	Yes	Pecan nuts	May Contain
Fish	No	Pistachio nuts	May Contain
Lupin	No	Walnuts	May Contain
Milk	Yes	Peanuts	May Contain
Molluscs	No	Sesame Seeds	No
		Soybeans	Yes
		Sulphur Dioxide and Sulphites	No

Risk Source:

Additional Allergen Information

Contains: Milk, Egg, Soya, Gluten (Wheat). The additional may contain allergens (Rye, Kamut, Spelt, Oats, Barley) relate to the inherent risk in the supply chain from different cereals from field to manufacturing.

SUPPLEMENTARY INGREDIENT INFORMATION

Palm Oil	Yes
Hydrogenated Vegetable Oil/Fat	No
GM Protein/DNA	No

ADDITIVES

Product Contains:

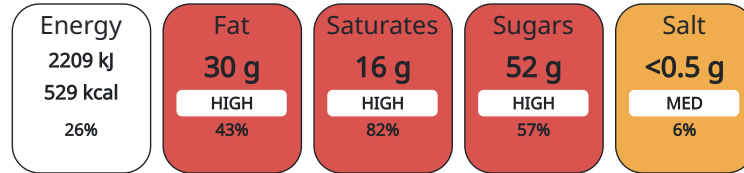
Artificial Colours	No	Artificial Flavourings	No
---------------------------	----	-------------------------------	----

DIET SUITABILITY

Vegan Diet	No	Vegetarian Diet	Suitable for
Halal Diet	No	Kosher Diet	No

NUTRITIONAL INFORMATION AS SOLD

Each 100g/ml portion contains:



of your reference intake.

Typical values per 100g/ml : Energy 529kcal / 2209kj

Nutrient	per 100g	RI per 100g
Energy (kj)	2209 kj	26%
Energy (kcal)	529 kcal	26%
Fat	30.4 g	43%
of which Saturates	16.4 g	82%
Carbohydrate	55.9 g	22%
of which Sugars	51.5 g	57%
Fibre	1.8 g	
Protein	7.8 g	16%
Salt	0.33 g	6%

HFSS (HIGH IN FAT, SALT AND SUGAR)

HFSS Status	Yes
HFSS Score	26

HANDLING & STORAGE INFORMATION

Directions For Use

Ready to eat.

Storage Instructions

Store in a cool, dry place. Once opened store in an airtight container.

Shelf Life from Time of Production	273 Days
---	----------

ACCREDITATIONS/ CERTIFICATIONS/ ASSURANCE SCHEMES ORIGIN

BRCGS Certified	Roundtable of Sustainable Palm Oil (RSPO)
Product Country of Origin	Turkey
Origin of the Primary Ingredient	Turkey

PRODUCT CHARACTERISTICS

Standards Testing			
Do you undertake trend analysis of microbiological results?	No	Is shelf life testing undertaken?	No

CONFIGURATION	Case Configuration	Inner Pack Configuration						
CONFIGURATION	Total Quantity of Inner Components in Outer Case	24 Units						
	Is the Outer Case Splittable?	No						
	Inner Component							
PRODUCT WEIGHTS	Variable Weight Consumer Item	No						
	Inner Component Weight	39 g						
	Outer Case							
	Outer Case Gross Weight	1.01 kg						
	Outer Case Net Weight	0.95 kg						
PRODUCT DIMENSIONS	Inner Component							
	Inner Component Depth	30 mm						
	Inner Component Width	150 mm						
	Inner Component Height	17 mm						
	Outer Case							
	Outer Case Depth	212 mm						
	Outer Case Width	164 mm						
	Outer Case Height	78 mm						
PALLET INFORMATION	Quantity of Cases Per Pallet Layer	31 Cases	Pallet Height	1.1 MTR				
	Quantity of Layers Per Pallet	12 Layers						
	Quantity of Cases Per Pallet	372 Cases						
	Inner Component Packaging							
PACKAGING	Type	Materials	Weight	Recycled Material %	Recyclable	Returnable	Composite	
	Film	Plastic	3.5 g					
	Outer Case Packaging							
	Type	Materials	Weight	Recycled Material %	Recyclable	Returnable	Composite	
	Shelf Ready Packaging (SRP)	Paper/Cardboard	66 g					
	Case	Paper/Cardboard	490 g					
	OTHER INFORMATION CONTACT INFORMATION							
Address								
Pladis (UK) Ltd								
pladis, Building 3, Chiswick Park								
566 Chiswick High Road								
W4 5YA								
Chiswick								
London								
England								
Anna.Stachniak@pladisglobal.com								

The information on the [Erudus System](#) has been supplied by the manufacturers of the products and, whilst the owners of the Erudus System take steps to ensure the information is regularly updated, they give no warranty and no guarantee that the information is accurate. Product information and ingredients may change, please always read product labels carefully in addition to using the information provided by Erudus.

We do not accept liability for any inaccuracies or incorrect information contained on this site.
Please visit <http://www.erudus.com/terms-and-conditions> for full terms and conditions.