

12614

Go Ahead Yogurt Breaks -Strawberry 24 x 35g e

Go Ahead Yogurt Breaks -strawberry 24 X 35g E

PRODUCT DESCRIPTION

Yogurt flavour topping on a light crispy biscuit with sultanas and a strawberry flavour filling

Brand	Pladis (UK) Ltd
Manufacturer Product Code	11300
Product Type	Food
Product Category	Biscuits, Wafers and Crackers
Storage Type	Ambient
Erudus ID	21a49f98e23a408b9ad63135d265f10b
Specification Type	Legacy

Inner Component GTIN 5000168129990

Outer Case GTIN 5000168129983



INGREDIENTS

Ingredient Declaration

WHEAT Flour, Dried Grapes (23%) (Sultanas and Currants in varying proportions), Yogurt Flavour Coating (19%) [Sugar, Vegetable Fats (Palm, Shea in varying proportions), Dried Whey (**MILK**), Dried Fermented **MILK** (1%), Dried Skimmed **MILK**, Dried Whole **MILK**, Lactose (**MILK**), Acid (Citric Acid), Emulsifier (**SOYA** Lecithin), Natural Flavouring], Strawberry Flavour Filling (7%) [Bulking Agent (Maltitol Syrup), Humectant (Glycerine), Strawberry Puree (0.7%), **WHEAT** Bran, Strawberry Puree Concentrate (0.1%), Gelling Agent (Pectins), Acidity Regulators (Citric Acid, Sodium Citrates), Natural Flavouring, Stabiliser (Calcium Lactate)], Sugar, Vegetable Oil (Sunflower), **OAT** Fibre, Maltodextrin, Calcium Carbonate, Emulsifiers (**SOYA** Lecithin, E472e), **MILK** Solids, Rice Flour, Glucose Syrup, Natural Flavouring, Raising Agents (Sodium Bicarbonate, Disodium Diphosphate, Ammonium Bicarbonate), Salt, Citrus Fibre.

ALLERGENS

Product Contains:

Celery/Celeriac	No	Mustard	No
Cereals Containing Gluten	Yes	Nuts (Tree)	May Contain
Barley	May Contain	Almond nuts	May Contain
Oats	Yes	Brazil nuts	May Contain
Rye	May Contain	Cashew nuts	May Contain
Wheat (including Spelt and Khorasan)	Yes	Hazelnuts	May Contain
Gluten content <20ppm	No	Macadamia (Queensland) nuts	May Contain
Crustacea	No	Pecan nuts	May Contain
Eggs	No	Pistachio nuts	May Contain
Fish	No	Walnuts	May Contain
Lupin	No	Peanuts	No
Milk	Yes	Sesame Seeds	May Contain
Molluscs	No	Soybeans	Yes
		Sulphur Dioxide and Sulphites	No

Risk Source:

Additional Allergen Information

Contains: Milk, Soya, Gluten. May also contain Nuts, Sesame Seeds.

**SUPPLEMENTARY
INGREDIENT
INFORMATION**

Palm Oil	Yes
Hydrogenated Vegetable Oil/Fat	No
GM Protein/DNA	No

ADDITIVES

Product Contains:

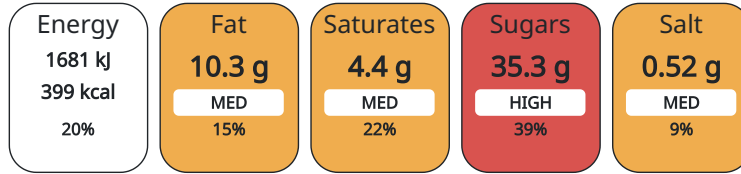
Artificial Colours	No	Artificial Flavourings	No
---------------------------	----	-------------------------------	----

DIET SUITABILITY

Suitable for Coeliacs	No	Halal Diet	No
Kosher Diet	No	Vegetarian Diet	Suitable for
Vegan Diet	No		

**NUTRITIONAL
INFORMATION**

Each 100g/ml portion contains:



of your reference intake.

Typical values per 100g/ml : Energy 399kcal / 1681kJ

Nutrient	per 100g/ml	RI per 100g/ml	per 17.8g/ml serving	RI per 17.8g/ml serving
Energy (kJ)	1681 kJ	20%	299.22	4%
Energy (kcal)	399 kcal	20%	71.02	4%
Fat	10.3 g	15%	1.83 g	3%
of which Saturates	4.4 g	22%	0.78 g	4%
Carbohydrate	72.1 g	28%	12.83 g	5%
of which Sugars	35.3 g	39%	6.28 g	7%
Fibre	3.7 g		0.66 g	
Protein	5.1 g	10%	0.91 g	2%
Salt	0.52 g	9%	0.09 g	2%
Serving Size		17.8 g		

**VITAMINS AND
MINERALS**

Nutrient	per 100g/ml	RI per 100g/ml	per 17.8g/ml serving	RI per 17.8g/ml serving
Calcium	338 mg	42%	60.16 mg	8%

**HANDLING &
STORAGE
INFORMATION****Directions For Use**

Ready to eat.

Storage Instructions

Store in a cool, dry place.

Shelf Life from Time of Production	308 Days
---	----------

**ACCREDITATIONS/
CERTIFICATIONS/
ASSURANCE
SCHEMES
ORIGIN**

BRCGS Certified	Roundtable of Sustainable Palm Oil (RSPO)
------------------------	--

Product Country of Origin	Netherlands (the)
----------------------------------	-------------------

**PRODUCT
CHARACTERISTICS**

Standards Testing

	Do you undertake trend analysis of microbiological results?	No	Is shelf life testing undertaken?	No			
CONFIGURATION	Case Configuration		Inner Pack Configuration				
	Total Quantity of Inner Components in Outer Case	24 Units					
PRODUCT WEIGHTS	Inner Component						
	Variable Weight Consumer Item	No					
	Weight/Volume						
	35g e						
	Outer Case						
	Outer Case Gross Weight	990 kg					
	Outer Case Net Weight	870 kg					
PRODUCT DIMENSIONS	Inner Component						
	Inner Component Depth	47 mm					
	Inner Component Width	132 mm					
	Inner Component Height	131 mm					
	Outer Case						
	Outer Case Depth	307 mm					
	Outer Case Width	113 mm					
	Outer Case Height	88 mm					
PALLET INFORMATION	Quantity of Cases Per Pallet Layer	31 Cases	Pallet Height	0.96 MTR			
	Quantity of Layers Per Pallet	11 Layers	Pallet Gross Weight	366 kg			
	Quantity of Cases Per Pallet	341 Cases					
PACKAGING	Inner Component Packaging						
	Type	Materials	Weight	Recycled Material %	Recyclable	Returnable	Composite
	Film	Plastic	0.1 g				
	Outer Case Packaging						
	Type	Materials	Weight	Recycled Material %	Recyclable	Returnable	Composite
	Case	Plastic	3 g				
	Case	Paper/Cardboard	97 g				
OTHER INFORMATION CONTACT INFORMATION	Address	Pladis (UK) Ltd pladis, Building 3, Chiswick Park 566 Chiswick High Road W4 5YA Chiswick London England					
		Anna.Stachniak@pladisglobal.com					

The information on the [Erudus System](#) has been supplied by the manufacturers of the products and, whilst the owners of the Erudus System take steps to ensure the information is regularly updated, they give no warranty and no guarantee that the information is accurate. Product information and ingredients may change, please always read product labels carefully in addition to using the information provided by Erudus.

We do not accept liability for any inaccuracies or incorrect information contained on this site.
Please visit <http://www.erudus.com/terms-and-conditions> for full terms and conditions.