

Changed Apr 09, 2025 12:33

Reviewed Apr 09, 2025 12:33

Erudus ID dfd5f39ae9db4b7089635a709c15b4ca

Version 1.0

Status Published

12620

Huel Daily A-Z Pineapple & Mango Can x12

Daily A-z Pineapple & Mango Flavoured Sparkling Multi-vitamin Drink 12x344g

PRODUCT DESCRIPTION

Sparkling multivitamin drink with fruit juices from concentrate, natural flavourings, sweetener, and natural caffeine

| | |
|---------------------------|----------------------------------|
| Brand | Huel |
| Manufacturer Product Code | AZV12-PMA-10R |
| Product Type | Drink |
| Product Category | Other |
| Storage Type | Ambient |
| Erudus ID | dfd5f39ae9db4b7089635a709c15b4ca |
| Specification Type | Generic |

Inner Component GTIN 5060925291568

Outer Case GTIN 5060925291728



INGREDIENTS

Ingredient Declaration

"Ingredients: Water, Fruit Juices from Concentrate (5.5%) (White Grape, Pineapple, Mango), Soluble Vegetable Fibre (Chicory, Corn), Micronutrient Blend (Minerals (Potassium, Calcium, Phosphorus, Iron, Selenium, Magnesium, Iodine, Zinc, Molybdenum, Chromium), Vitamins (C, E, Niacin, A, K2, Pantothenic Acid, D3, Biotin, Folate, B12, D2, B6, B1, K1, B2), Choline), Acidity Regulators: Citric Acid, Malic Acid, Natural Flavourings, Acerola Cherry Powder, Natural Caffeine (from Coffee Bean) (0.03%), Sweetener: Sucralose, Guava Extract."

ALLERGENS

Product Contains:

| | | | |
|--------------------------------------|----|-------------------------------|----|
| Celery/Celeriac | No | Mustard | No |
| Cereals Containing Gluten | No | Nuts (Tree) | No |
| Barley | No | Almond nuts | No |
| Oats | No | Brazil nuts | No |
| Rye | No | Cashew nuts | No |
| Wheat (including Spelt and Khorasan) | No | Hazelnuts | No |
| Crustacea | No | Macadamia (Queensland) nuts | No |
| Eggs | No | Pecan nuts | No |
| Fish | No | Pistachio nuts | No |
| Lupin | No | Walnuts | No |
| Milk | No | Peanuts | No |
| Molluscs | No | Sesame Seeds | No |
| | | Soybeans | No |
| | | Sulphur Dioxide and Sulphites | No |

FREE FROM CLAIMS

| | | | |
|---------------------------|-----|---------------------------|-----|
| Free From Barley | Yes | Free From Mustard | Yes |
| Free From Celery/Celeriac | Yes | Free From Nuts | Yes |
| Free From Crustacea | Yes | Free From Oats | Yes |
| Free From Eggs | Yes | Free From Peanuts | Yes |
| Free From Fish | Yes | Free From Rye | Yes |
| Gluten-Free | Yes | Free From Sesame | Yes |
| Free From Lactose | Yes | Free From Soybeans | Yes |
| Free From Lupin | Yes | Free From Sulphur Dioxide | Yes |
| Free From Milk | Yes | Free From Wheat | Yes |
| Free From Molluscs | Yes | | |

SUPPLEMENTARY INGREDIENT INFORMATION

| | | | |
|----------------|----|-------------------------------|---------|
| Palm Oil | No | Alcoholic Strength %Vol (ABV) | 0 % Vol |
| GM Protein/DNA | No | CBD Concentration per Unit | 0 mg |

ADDITIVES

Product Contains:

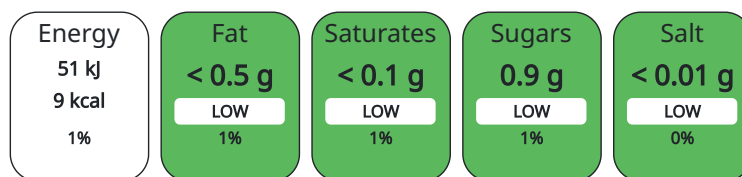
| | | | |
|------------------------------|----|--------------------------|-----|
| Artificial Antioxidants | No | Artificial Flavourings | No |
| Artificial Colours | No | Artificial Preservatives | No |
| Artificial Flavour Enhancers | No | Artificial Sweeteners | Yes |

DIET SUITABILITY

| | | | |
|------------|-----------|-----------------|--------------|
| Vegan Diet | Certified | Vegetarian Diet | Suitable for |
| Halal Diet | No | Kosher Diet | No |

NUTRITIONAL INFORMATION AS SOLD

Each 100g/ml portion contains:



of your reference intake.

Typical values per 100g/ml : Energy 9kcal / 51kJ

| Nutrient | per 100ml | RI per 100ml | per 330ml serving | RI per 330ml serving |
|--------------------|-----------|--------------|-------------------|----------------------|
| Energy (kj) | 50.9 kj | 1% | 167.97 | 2% |
| Energy (kcal) | 9.09 kcal | 0% | 30 | 2% |
| Fat | < 0.5 g | 1% | 1.65 g | 2% |
| of which Saturates | < 0.1 g | 1% | 0.33 g | 2% |
| Carbohydrate | 1.33 g | 1% | 4.39 g | 2% |
| of which Sugars | 0.9 g | 1% | 2.97 g | 3% |
| Fibre | 1.06 g | | 3.5 g | |
| Protein | < 0.5 g | 1% | 1.65 g | 3% |
| Salt | < 0.01 g | 0% | 0.03 g | 1% |

| | |
|--------------------|------------|
| Serving Size | 330 ml |
| Number of Servings | 1 Servings |

NUTRITIONAL
INFORMATION AS
PREPARED

| Nutrient | per 100g/ml prepared | RI per 100g/ml prepared | per 330ml prepared | RI per 330g/ml prepared |
|--------------------|----------------------|-------------------------|--------------------|-------------------------|
| Energy (kj) | | | 168 kj | 2% |
| Energy (kcal) | | | 30 kcal | 2% |
| Fat | | | < 0.5 g | 1% |
| of which Saturates | | | < 0.5 g | 3% |
| Carbohydrate | | | 4.4 g | 2% |
| of which Sugars | | | 3 g | 3% |
| Fibre | | | 3.5 g | |
| Protein | | | < 0.5 g | 1% |
| Salt | | | < 0.5 g | 8% |

VITAMINS AND MINERALS AS SOLD

| Nutrient | per 100ml | RI per 100ml | per 330ml serving | RI per 330ml serving |
|-------------------|-----------|--------------|-------------------|----------------------|
| Vitamin A | 269 µg | 34% | 887.7 µg | 111% |
| Vitamin D | 3 µg | 60% | 9.9 µg | 198% |
| Vitamin E | 4.5 mg | 38% | 14.85 mg | 124% |
| Vitamin K | 6 µg | 8% | 19.8 µg | 26% |
| Vitamin C | 27 mg | 34% | 89.1 mg | 111% |
| Thiamin (B1) | 0.36 mg | 33% | 1.19 mg | 108% |
| Riboflavin (B2) | 0.06 mg | 4% | 0.2 mg | 14% |
| Niacin (B3) | 4.8 mg | 30% | 15.84 mg | 99% |
| Vitamin B6 | 0.51 mg | 36% | 1.68 mg | 120% |
| Folate/Folic Acid | 119 µg | 60% | 392.7 µg | 196% |
| Vitamin B12 | 0.75 µg | 30% | 2.48 µg | 99% |
| Biotin (B7) | 15 µg | 30% | 49.5 µg | 99% |
| Pantothenic acid | 1.8 mg | 30% | 5.94 mg | 99% |
| Potassium | 140 mg | 7% | 462 mg | 23% |
| Chloride | 35.8 mg | 4% | 118.14 mg | 15% |
| Calcium | 38.8 mg | 5% | 128.04 mg | 16% |
| Phosphorus | 37.3 mg | 5% | 123.09 mg | 18% |
| Magnesium | 23.9 mg | 6% | 78.87 mg | 21% |
| Iron | 0.63 mg | 5% | 2.08 mg | 15% |
| Zinc | 0.45 mg | 5% | 1.49 mg | 15% |
| Selenium | 16 µg | 29% | 52.8 µg | 96% |
| Chromium | 1.8 µg | 5% | 5.94 µg | 15% |
| Molybdenum | 15 µg | 30% | 49.5 µg | 99% |
| Iodine | 44.8 µg | 30% | 147.84 µg | 99% |

HFSS (HIGH IN FAT, SALT AND SUGAR)

| | |
|-------------|-----|
| HFSS Status | Yes |
| HFSS Score | -1 |

HANDLING & STORAGE INFORMATION

| | |
|--|----------|
| Directions For Use | |
| Storage: Store at room temperature. Best served chilled. Once open consume immediately. Do not freeze. Do not shake. | |
| Storage Instructions | |
| Storage: Store at room temperature. Best served chilled. Once open consume immediately. Do not freeze. Do not shake. | |
| Storage Instructions After Opening | |
| Once open consume immediately. | |
| Shelf Life from Time of Production | 365 Days |
| Shelf Life From Opening | 365 Days |

ACCREDITATIONS/ CERTIFICATIONS/ ASSURANCE SCHEMES ORIGIN

| | |
|---|----------------|
| B Corp Certification | |
| | |
| Product Country of Origin | United Kingdom |
| Origin of the Primary Ingredient | United Kingdom |

PRODUCT CHARACTERISTICS

| | |
|--------------------------|--|
| Standards Testing | |
| | |

CONFIGURATION

Case Configuration

Inner Pack Configuration

| | |
|---|----------|
| Variable Inner Components in Outer Case | No |
| Total Quantity of Inner Components in Outer Case | 12 Units |
| Is the Outer Case Splittable? | No |

PRODUCT WEIGHTS

| | |
|--------------------------------------|--------|
| Inner Component | |
| Variable Weight Consumer Item | No |
| Inner Component Weight | 344 g |
| Inner Component Volume | 330 ml |
| Outer Case | |
| Outer Case Gross Weight | 0.4 kg |
| Outer Case Net Weight | 0.4 kg |

PRODUCT DIMENSIONS

| | |
|---------------------------------|----------|
| Inner Component | |
| Inner Component Depth | 58.4 mm |
| Inner Component Width | 58.4 mm |
| Inner Component Height | 145.4 mm |
| Inner Component Diameter | 58 mm |
| Outer Case | |
| Outer Case Depth | 339 mm |
| Outer Case Width | 277 mm |
| Outer Case Height | 149 mm |

PALLET INFORMATION

| | | | |
|---|-----------|----------------------|--------------------|
| Quantity of Cases Per Pallet Layer | 26 Cases | Pallet Type | UK Standard Pallet |
| Quantity of Layers Per Pallet | 9 Layers | Pallet Height | 1.52 MTR |
| Quantity of Cases Per Pallet | 234 Cases | | |

PACKAGING

| Inner Component Packaging | | | | | | |
|---------------------------|-----------------------------|--------|---------------------|------------|------------|-----------|
| Type | Materials | Weight | Recycled Material % | Recyclable | Returnable | Composite |
| Can | Aluminium | 14 g | | Yes | | |
| Outer Case Packaging | | | | | | |
| Type | Materials | Weight | Recycled Material % | Recyclable | Returnable | Composite |
| Tray | Paper/Cardboard / Cardboard | 14 g | | Yes | | |
| Shrink Wrap | Plastic | 1 g | | | | |

MARKETING INFORMATION

Marketing Description
Sparkling multivitamin drink with fruit juices from concentrate, natural flavourings, sweetener, and natural caffeine

SAFETY & WARNINGS

Product Health Warning
High caffeine content. High vitamin and mineral content. Not recommended for children or pregnant or breastfeeding women. Children under 12 years should consult their doctor before consuming.

| | |
|-------------------------------|-----|
| Age Restricted Product | Yes |
| Age Restriction | 16 |

OTHER INFORMATION

| | | | |
|-----------------------|------------|-----------------------------|-----|
| Commodity Code | 2202100000 | Value Added Tax Rate | 20% |
|-----------------------|------------|-----------------------------|-----|

CONTACT
INFORMATION

Address

Huel
Unit 6, Icknield Way Industrial Estate
HP23 4RN
Tring
United Kingdom

Jon@huel.com

Commercial

Jon Morris
Jon@huel.com
07795661446
Out of Home Controller

The information on the [Erudus System](#) has been supplied by the manufacturers of the products and, whilst the owners of the Erudus System take steps to ensure the information is regularly updated, they give no warranty and no guarantee that the information is accurate. Product information and ingredients may change, please always read product labels carefully in addition to using the information provided by Erudus.

We do not accept liability for any inaccuracies or incorrect information contained on this site.
Please visit <http://www.erudus.com/terms-and-conditions> for full terms and conditions.