

12632

Nestle Cheerios 14x390g

Cheerios 14x

PRODUCT DESCRIPTION

Nestle Cheerios 14x390g

Brand	Nestle Cereal Partners
Manufacturer Product Code	12461219
Product Type	Food
Product Category	Cereals and Grains
Storage Type	Ambient
Erudus ID	dc093f56b6ab4ff6a4808a5cbb3cd8ed
Specification Type	Legacy

Inner Component GTIN	7613287157201
Outer Case GTIN	7613287160126



INGREDIENTS

Ingredient Declaration

Whole Grain **OAT** Flour (29.6%), Whole Grain **WHEAT** (29.6%), Whole Grain **BARLEY** Flour (17.9%), Sugar, **WHEAT** Starch, Invert Sugar Syrup, Whole Grain Maize Flour (2.1%), Whole Grain Rice Flour (2.1%), Molasses, Calcium Carbonate, Sunflower Oil, Salt, Carotene, Annatto Norbixin, Caramelised Sugar Syrup, Tocopherols, Iron, Vitamin C, B3, B5, B9, D, B6, B2.

ALLERGENS

Product Contains:

Celery/Celery	No	Mustard	No
Cereals Containing Gluten	Yes	Nuts (Tree)	May Contain
Barley	Yes	Almond nuts	May Contain
Oats	Yes	Brazil nuts	May Contain
Rye	No	Cashew nuts	May Contain
Wheat (including Spelt and Khorasan)	Yes	Hazelnuts	May Contain
Gluten content <20ppm	No	Macadamia (Queensland) nuts	May Contain
Crustacea	No	Pecan nuts	May Contain
Eggs	No	Pistachio nuts	May Contain
Fish	No	Walnuts	May Contain
Lupin	No	Peanuts	No
Milk	No	Sesame Seeds	No
Molluscs	No	Soybeans	No
		Sulphur Dioxide and Sulphites	No

Risk Source:

Additional Allergen Information

For allergens, including cereals containing gluten, see ingredients in bold. May also contain Nuts.

SUPPLEMENTARY
INGREDIENT
INFORMATION

Palm Oil	No
Hydrogenated Vegetable Oil/Fat	No
GM Protein/DNA	No

ADDITIVES

Product Contains:

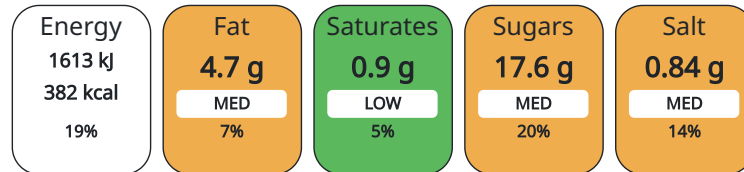
Artificial Antioxidants	No	Artificial Flavourings	No
Artificial Colours	No	Artificial Preservatives	No
Artificial Flavour Enhancers	No	Artificial Sweeteners	No

DIET SUITABILITY

Suitable for Coeliacs	No	Halal Diet	No
Kosher Diet	No	Vegetarian Diet	No
Vegan Diet	No		

NUTRITIONAL
INFORMATION

Each 100g/ml portion contains:



of your reference intake.

Typical values per 100g/ml : Energy 382kcal / 1613kJ

Nutrient	per 100g/ml	RI per 100g/ml
Energy (kJ)	1613 kJ	19%
Energy (kcal)	382 kcal	19%
Fat	4.7 g	7%
of which Saturates	0.9 g	5%
Carbohydrate	71.2 g	27%
of which Sugars	17.6 g	20%
Fibre	8.9 g	
Protein	9.4 g	19%
Salt	0.84 g	14%

VITAMINS AND
MINERALS

Nutrient	per 100g/ml	RI per 100g/ml
Vitamin A	0 µg	
Vitamin C	40 mg	50%
Folate/Folic Acid	163 µg	82%
Calcium	525 mg	66%
Iron	13 mg	93%
Zinc	0 mg	

SUPPLEMENTARY
NUTRITIONAL
INFORMATION

Cholesterol per 100 g/ml (UK/FR)	0 g
Fat Percentage in Dry Matter per 100 g/ml	0 %
Non Milk Extrinsic Sugars per 100 g/ml	0 g

HANDLING & STORAGE INFORMATION

Directions For Use

N/A

Storage Instructions

N/A

Shelf Life from Time of Production 360 Days

ORIGIN

Product Country of Origin United Kingdom

PRODUCT CHARACTERISTICS

Standards Testing

Do you undertake trend analysis of microbiological results? No

Is shelf life testing undertaken? No

CONFIGURATION

Case Configuration

Inner Pack Configuration

Total Quantity of Inner Components in Outer Case 14 Units

PRODUCT WEIGHTS

Inner Component

Variable Weight Consumer Item No

Net Drained Weight 0.39 kg

Weight/Volume

454.8

Outer Case

Outer Case Gross Weight 6.66 kg

Outer Case Net Weight 5.46 kg

PRODUCT DIMENSIONS

Inner Component

Inner Component Depth 66 mm

Inner Component Width 192 mm

Inner Component Height 300 mm

Outer Case

Outer Case Depth 495 mm

Outer Case Width 392 mm

Outer Case Height 306 mm

PALLET INFORMATION

Quantity of Cases Per Pallet Layer 6 Cases

Pallet Height 1.39 MTR

Quantity of Layers Per Pallet 4 Layers

Pallet Gross Weight 191 kg

Quantity of Cases Per Pallet 24 Cases

OTHER INFORMATION CONTACT INFORMATION

Address

Nestle Cereal Partners
3B Falcon Gate
Shire Park
AL7 1TW
Welwyn Garden City
Hertfordshire
United Kingdom

Commercial

Danelle Scharneck
danelle.scharneck@cpuk.nestle.com
07554099271
Out of Home National Account Manager

George.Berryman@cpuk.nestle.com
01707824425

The information on the [Erudus System](#) has been supplied by the manufacturers of the products and, whilst the owners of the Erudus System take steps to ensure the information is regularly updated, they give no warranty and no guarantee that the information is accurate. Product information and ingredients may change, please always read product labels carefully in addition to using the information provided by Erudus.

We do not accept liability for any inaccuracies or incorrect information contained on this site.
Please visit <http://www.erudus.com/terms-and-conditions> for full terms and conditions.