

Changed Jun 03, 2025 11:16

Reviewed Jun 03, 2025 11:16

Erudus ID 8fb82f7d9d7c43808296afce4313c502

Version 1.0

Status Published

12650

# ROBINSONS DOUBLE CONCENTRATE ORANGE NO ADDED SUGAR 1.75L PET X6 (NPF21)

Concentrated Low Calorie Whole Orange Soft Drink With Sweeteners 6x1.75litre

## PRODUCT DESCRIPTION

Concentrated soft drink

Brand	<a href="#">Britvic Soft Drinks Limited</a>
Manufacturer Product Code	250696
Product Type	Drink
Product Category	Juices and Cordials
Storage Type	Ambient
Erudus ID	8fb82f7d9d7c43808296afce4313c502
Specification Type	Drinks

Inner Component GTIN	5010102114135
Manufacturer Component Code	22677/002/P01
Outer Case GTIN	5010102146136
Pallet GTIN	5010102316591



## INGREDIENTS

### Ingredient Declaration

Water, Orange Fruit From Concentrate (20%), Acid (Citric Acid), Acidity Regulator (Sodium Citrate), Natural Orange Flavouring with other Natural Flavourings, Sweeteners (Acesulfame K, Sucralose), Stabilisers (Cellulose Gum, Sucrose Acetate Isobutyrate), Preservatives (Potassium Sorbate, Sodium **Metabisulphite**), Emulsifier (Glycerol Esters of Wood Rosins), Natural Colour (Carotenes).

ALLERGENS

Product Contains:

Celery/Celeriac	No	Mustard	No
Cereals Containing Gluten	No	Nuts (Tree)	No
Barley	No	Almond nuts	No
Oats	No	Brazil nuts	No
Rye	No	Cashew nuts	No
Wheat (including Spelt and Khorasan)	No	Hazelnuts	No
Crustacea	No	Macadamia (Queensland) nuts	No
Eggs	No	Pecan nuts	No
Fish	No	Pistachio nuts	No
Lupin	No	Walnuts	No
Milk	No	Peanuts	No
Molluscs	No	Sesame Seeds	No
		Soybeans	No
		Sulphur Dioxide and Sulphites	Yes

SUPPLEMENTARY INGREDIENT INFORMATION

Palm Oil	No	CBD Concentration per Unit	0 mg
Hydrogenated Vegetable Oil/Fat	No		
GM Protein/DNA	No		

ADDITIVES

Product Contains:

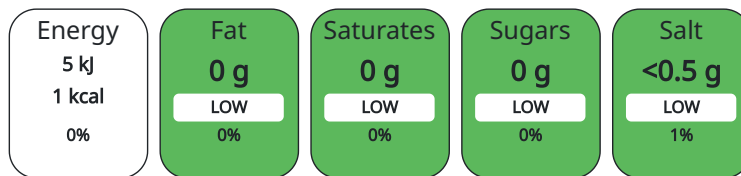
Artificial Antioxidants	No	Artificial Flavourings	No
Artificial Colours	No	Artificial Preservatives	Yes
Artificial Flavour Enhancers	No	Artificial Sweeteners	Yes

DIET SUITABILITY

Vegan Diet	Suitable for	Vegetarian Diet	Suitable for
Halal Diet	Suitable for	Kosher Diet	Suitable for

NUTRITIONAL INFORMATION AS SOLD

Each 100g/ml portion contains:



of your reference intake.

Typical values per 100g/ml : Energy 1kcal / 5kJ

Nutrient	per 100ml	RI per 100ml
Energy (kJ)	5 kJ	0%
Energy (kcal)	1 kcal	0%
Fat	0 g	
of which Saturates	0 g	
Carbohydrate	0 g	
of which Sugars	0 g	
Protein	0 g	
Salt	0.03 g	1%

Nutrition Statements

Nutritional data provided as consumed after dilution.

NUTRITIONAL  
INFORMATION AS  
PREPARED

Nutrient	per 100g/ml prepared	RI per 100g/ml prepared
Energy (kcal)		

HFSS (HIGH IN  
FAT, SALT AND  
SUGAR)

HFSS Status	No	
HFSS Score	0	

HANDLING &  
STORAGE  
INFORMATION

<b>Directions For Use</b>		
Dilute 1 part concentrate to 9 parts water		
<b>Storage Instructions</b>		
Store in a cool and dry place		
<b>Shelf Life from Time of Production</b>	365 Days	
<b>Shelf Life From Opening</b>	28 Days	

ACCREDITATIONS/  
CERTIFICATIONS/  
ASSURANCE  
SCHEMES  
ORIGIN

<b>FSSC 22000</b>		
<b>Product Country of Origin</b>	United Kingdom	
<b>Origin of the Primary Ingredient</b>	Not Applicable	

PRODUCT  
CHARACTERISTICS  
CONFIGURATION

Standards Testing		
Case Configuration		Inner Pack Configuration
<b>Variable Inner Components in Outer Case</b>	No	
<b>Total Quantity of Inner Components in Outer Case</b>	6 Units	
<b>Is the Outer Case Splittable?</b>	Yes	

PRODUCT  
WEIGHTS

Inner Component		
<b>Inner Component Volume</b>	1.75 litre	
Outer Case		
<b>Outer Case Gross Weight</b>	10.8 kg	
<b>Outer Case Net Weight</b>	10.7 kg	

PRODUCT  
DIMENSIONS

Inner Component		
<b>Inner Component Depth</b>	0 mm	
<b>Inner Component Width</b>	0 mm	
<b>Inner Component Height</b>	312.3 mm	
<b>Inner Component Diameter</b>	98 mm	
Outer Case		
<b>Outer Case Depth</b>	298 mm	
<b>Outer Case Width</b>	199 mm	
<b>Outer Case Height</b>	313 mm	

PALLET  
INFORMATION

<b>Quantity of Cases Per Pallet Layer</b>	20 Cases	<b>Pallet Type</b>	UK Standard Pallet
<b>Quantity of Layers Per Pallet</b>	4 Layers	<b>Pallet Height</b>	1.42 MTR
<b>Quantity of Cases Per Pallet</b>	80 Cases	<b>Pallet Gross Weight</b>	896 kg

OTHER  
INFORMATION

CONTACT  
INFORMATION

**Address**

Britvic Soft Drinks Limited  
Breakspear Park  
Breakspear Way  
HP2 4TZ  
Hemel Hempstead  
Hertfordshire  
United Kingdom

Graham.Townes@britvic.com

**Technical**

Nikki Burton  
TechnicalInformationRequests@britvic.com  
+44 (0) 7736747481  
Technical Specifications Manager

The information on the [Erudus System](#) has been supplied by the manufacturers of the products and, whilst the owners of the Erudus System take steps to ensure the information is regularly updated, they give no warranty and no guarantee that the information is accurate. Product information and ingredients may change, please always read product labels carefully in addition to using the information provided by Erudus.

We do not accept liability for any inaccuracies or incorrect information contained on this site.  
Please visit <http://www.erudus.com/terms-and-conditions> for full terms and conditions.