

Changed Jan 16, 2025 10:05

Reviewed Jan 16, 2025 10:05

Erudus ID ba36f02a8dfb47558a1d6857009b2003

Version 2.0

Status Published

13004

CADBURY CRUNCHIE MILK CHOCOLATE 40 GR 48CA

Cadbury Crunchie Milk Chocolate 40 Gr 48x40g

PRODUCT DESCRIPTION

Milk chocolate with golden honeycombed centre (38%).

Brand	Mondelez UK Ltd
Manufacturer Product Code	611496
Product Type	Food
Product Category	Confectionery
Storage Type	Ambient
Erudus ID	ba36f02a8dfb47558a1d6857009b2003
Specification Type	Generic



Inner Component GTIN 5000201468611

Outer Case GTIN 5000201160744



INGREDIENTS

Ingredient Declaration

Sugar, glucose syrup, cocoa butter, cocoa mass, skimmed MILK powder, whey permeate (from MILK), palm oil, MILK fat, emulsifier (E442), flavourings, coconut oil.

Ingredient Statements

MILK CHOCOLATE: MILK SOLIDS 14% MINIMUM. CONTAINS VEGETABLE FATS IN ADDITION TO COCOA BUTTER.

ALLERGENS

Product Contains:

Celery/Celeriac	No	Mustard	No
Cereals Containing Gluten	No	Nuts (Tree)	No
Barley	No	Almond nuts	No
Oats	No	Brazil nuts	No
Rye	No	Cashew nuts	No
Wheat (including Spelt and Khorasan)	No	Hazelnuts	No
Crustacea	No	Macadamia (Queensland) nuts	No
Eggs	No	Pecan nuts	No
Fish	No	Pistachio nuts	No
Lupin	No	Walnuts	No
Milk	Yes	Peanuts	No
Molluscs	No	Sesame Seeds	No
		Soybeans	No
		Sulphur Dioxide and Sulphites	No

SUPPLEMENTARY INGREDIENT INFORMATION

Palm Oil	Yes
Hydrogenated Vegetable Oil/Fat	No
GM Protein/DNA	No

ADDITIVES

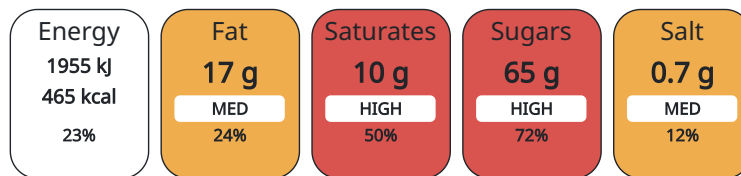
Product Contains:

DIET SUITABILITY

Vegan Diet	No	Vegetarian Diet	Suitable for
Halal Diet	No	Kosher Diet	No

NUTRITIONAL INFORMATION AS SOLD

Each 100g/ml portion contains:



of your reference intake.

Typical values per 100g/ml : Energy 465kcal / 1955kj

Nutrient	per 100g	RI per 100g
Energy (kJ)	1955 kJ	23%
Energy (kcal)	465 kcal	23%
Fat	17 g	24%
of which Saturates	10 g	50%
Carbohydrate	74 g	28%
of which Sugars	65 g	72%
Fibre	1.3 g	
Protein	3.1 g	6%
Salt	0.72 g	12%

Serving Size Description	1 portion = 1 bar.
Number of Servings	1 Servings

HANDLING &
STORAGE
INFORMATION

Directions For Use

Ready To Eat

Storage Instructions

STORE IN A DRY PLACE. PROTECT FROM HEAT. DO NOT REFRIGERATE

Shelf Life from Time of Production 275 Days

ORIGIN

Product Country of Origin Poland

Origin of the Primary Ingredient

PRODUCT
CHARACTERISTICS
CONFIGURATION

Standards Testing

Case Configuration

Inner Pack Configuration

Total Quantity of Inner Components in 48 Units

Outer Case

Is the Outer Case Splittable? No

PRODUCT
WEIGHTS

Inner Component

Variable Weight Consumer Item No

Inner Component Weight 40 g

Outer Case

Outer Case Gross Weight 2.07 kg

Outer Case Net Weight 1.92 kg

PRODUCT
DIMENSIONS

Inner Component

Inner Component Depth 38 mm

Inner Component Width 160 mm

Inner Component Height 21 mm

Outer Case

Outer Case Depth 255 mm

Outer Case Width 158 mm

Outer Case Height 126 mm

PALLET
INFORMATION

Quantity of Cases Per Pallet Layer 28 Cases

Pallet Type Euro Pallet

Quantity of Layers Per Pallet 15 Layers

Pallet Height 2.05 MTR

Quantity of Cases Per Pallet 420 Cases

Pallet Gross Weight 872.5 kg

PACKAGING

Inner Component Packaging

Type	Materials	Weight	Recycled Material %	Recyclable	Returnable	Composite
Pack	Plastic	39.22 g				

Outer Case Packaging

Type	Materials	Weight	Recycled Material %	Recyclable	Returnable	Composite
Case	Plastic	0.57 g				
Case	Paper/Cardboard	124 g				

CONTACT
INFORMATION

Address

Mondelez UK Ltd
PO Box 12
Bournville Lane
B30 2LU
Bournville
Birmingham
England

thomas.brooks@mdlz.com
+44 1214 582 000

Technical

Tomas Sakalik
tomas.sakalik@mdlz.com
Publication Expert

The information on the [Erudus System](#) has been supplied by the manufacturers of the products and, whilst the owners of the Erudus System take steps to ensure the information is regularly updated, they give no warranty and no guarantee that the information is accurate. Product information and ingredients may change, please always read product labels carefully in addition to using the information provided by Erudus.

We do not accept liability for any inaccuracies or incorrect information contained on this site.
Please visit <http://www.erudus.com/terms-and-conditions> for full terms and conditions.