

Changed Aug 02, 2024 13:37

Reviewed Aug 02, 2024 13:37

Erudus ID 6c92d9c33fb6401ca82bcd9c46b31c4e

Version 2.0

Status Published

11387

CADBURY DAIRY MILK CHOCOLATE BAR 48CA

Cadbury Dairy Milk Chocolate Bar 48x45g

PRODUCT DESCRIPTION

CADBURY DAIRY MILK CHOCOLATE BAR

Brand	Mondelez UK Ltd
Manufacturer Product Code	968169
Product Type	Food
Product Category	Confectionery
Storage Type	Ambient
Erudus ID	6c92d9c33fb6401ca82bcd9c46b31c4e
Specification Type	Generic



Inner Component GTIN 07622300743536

Outer Case GTIN 07622300743529



INGREDIENTS

Ingredient Declaration

MILK**, Sugar, Cocoa butter, Cocoa mass, Vegetable fat (palm, shea), Emulsifiers (E442, E476), Flavourings.

Ingredient Statements

**The equivalent of 426 ml of fresh liquid milk in every 227g of milk chocolate

ALLERGENS

Product Contains:

Celery/Celeriac	No	Mustard	No
Cereals Containing Gluten	May Contain	Nuts (Tree)	May Contain
Barley	No	Almond nuts	May Contain
Oats	No	Brazil nuts	May Contain
Rye	No	Cashew nuts	May Contain
Wheat (including Spelt and Khorasan)	May Contain	Hazelnuts	May Contain
Crustacea	No	Macadamia (Queensland) nuts	May Contain
Eggs	No	Pecan nuts	May Contain
Fish	No	Pistachio nuts	May Contain
Lupin	No	Walnuts	May Contain
Milk	Yes	Peanuts	No
Molluscs	No	Sesame Seeds	No
		Soybeans	No
		Sulphur Dioxide and Sulphites	No

Risk Source:

Additional Allergen Information

MAY CONTAIN NUTS, WHEAT.

**SUPPLEMENTARY
INGREDIENT
INFORMATION**

Palm Oil	Yes
Hydrogenated Vegetable Oil/Fat	No
GM Protein/DNA	No

ADDITIVES

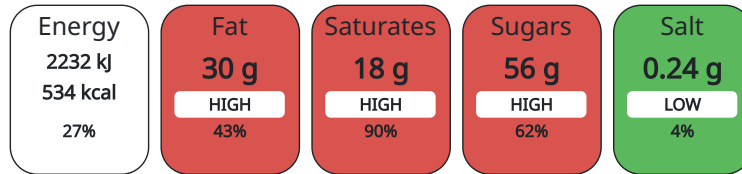
Product Contains:

DIET SUITABILITY

Vegan Diet	No	Vegetarian Diet	Suitable for
Halal Diet	No	Kosher Diet	No

**NUTRITIONAL
INFORMATION AS
SOLD**

Each 100g/ml portion contains:



of your reference intake.

Typical values per 100g/ml : Energy 534kcal / 2232kJ

Nutrient	per 100g	RI per 100g
Energy (kJ)	2232 kJ	27%
Energy (kcal)	534 kcal	27%
Fat	30 g	43%
of which Saturates	18 g	90%
Carbohydrate	57 g	22%
of which Sugars	56 g	62%
Fibre	2.1 g	
Protein	7.3 g	15%
Salt	0.24 g	4%

**HFSS (HIGH IN
FAT, SALT AND
SUGAR)**

HFSS Status	Yes
HFSS Score	25

**HANDLING &
STORAGE
INFORMATION**

Directions For Use

Ready To Eat

Storage Instructions

STORE IN A DRY PLACE. PROTECT FROM HEAT.

Shelf Life from Time of Production	365 Days
---	----------

ORIGIN

Product Country of Origin	United Kingdom
Origin of the Primary Ingredient	

**PRODUCT
CHARACTERISTICS
CONFIGURATION**

Standards Testing

Case Configuration	Inner Pack Configuration
---------------------------	--------------------------

Total Quantity of Inner Components in	48 Units
--	----------

Outer Case

Is the Outer Case Splittable?	No
--------------------------------------	----

PRODUCT WEIGHTS

Inner Component	
Variable Weight Consumer Item	No
Inner Component Weight	45 g
Outer Case	
Outer Case Gross Weight	2.29 kg
Outer Case Net Weight	2.16 kg

PRODUCT DIMENSIONS

Inner Component	
Inner Component Depth	14 mm
Inner Component Width	150 mm
Inner Component Height	37 mm
Outer Case	
Outer Case Depth	218 mm
Outer Case Width	152 mm
Outer Case Height	125 mm

PALLET INFORMATION

Quantity of Cases Per Pallet Layer	32 Cases	Pallet Height	1.54 MTR
Quantity of Layers Per Pallet	12 Layers	Pallet Gross Weight	879.76 kg
Quantity of Cases Per Pallet	384 Cases		

PACKAGING

Inner Component Packaging						
Type	Materials	Weight	Recycled Material %	Recyclable	Returnable	Composite
Pack	Plastic	38.35 g				
Outer Case Packaging						
Type	Materials	Weight	Recycled Material %	Recyclable	Returnable	Composite
Case	Paper/Cardboard	96 g				

OTHER INFORMATION CONTACT INFORMATION

Address

Mondelez UK Ltd
 PO Box 12
 Bournville Lane
 B30 2LU
 Bournville
 Birmingham
 England

thomas.brooks@mdlz.com
 +44 1214 582 000

Technical

Tomas Sakalik
 tomas.sakalik@mdlz.com
 Publication Expert

The information on the [Erudus System](#) has been supplied by the manufacturers of the products and, whilst the owners of the Erudus System take steps to ensure the information is regularly updated, they give no warranty and no guarantee that the information is accurate. Product information and ingredients may change, please always read product labels carefully in addition to using the information provided by Erudus.

We do not accept liability for any inaccuracies or incorrect information contained on this site. Please visit <http://www.erudus.com/terms-and-conditions> for full terms and conditions.