

Changed Aug 02, 2024 12:53

Reviewed Aug 02, 2024 12:53

Erudus ID c8f9c4a452d6401eb857bdb4b349011d

Version 2.0

Status Published

13009

CADBURY DAIRY MILK 49G FRUIT AND NUT 48CA

Cadbury Dairy Milk 49g Fruit And Nut 48x49g

PRODUCT DESCRIPTION

CADBURY DAIRY MILK CHOCOLATE BAR FRUIT AND NUT

Brand	Mondelez UK Ltd
Manufacturer Product Code	968383
Product Type	Food
Product Category	Confectionery
Storage Type	Ambient
Erudus ID	c8f9c4a452d6401eb857bdb4b349011d
Specification Type	Generic

Inner Component GTIN 07622300743659

Outer Case GTIN 07622300743642



INGREDIENTS

Ingredient Declaration

MILK**, sugar, cocoa butter, dried grapes, ALMONDS, cocoa mass, vegetable fats (palm, shea), emulsifiers (E442, E476), cocoa, flavourings

Ingredient Statements

**The equivalent of 426ml of fresh liquid milk in every 227g of milk chocolate.

ALLERGENS

Product Contains:

Celery/Celeriac	No	Mustard	No
Cereals Containing Gluten	May Contain	Nuts (Tree)	Yes
Barley	No	Almond nuts	Yes
Oats	No	Brazil nuts	No
Rye	No	Cashew nuts	No
Wheat (including Spelt and Khorasan)	May Contain	Hazelnuts	No
Crustacea	No	Macadamia (Queensland) nuts	No
Eggs	No	Pecan nuts	No
Fish	No	Pistachio nuts	No
Lupin	No	Walnuts	No
Milk	Yes	Peanuts	No
Molluscs	No	Sesame Seeds	No
		Soybeans	No
		Sulphur Dioxide and Sulphites	No

Risk Source:

Additional Allergen Information

MAY CONTAIN OTHER NUTS, WHEAT.

**SUPPLEMENTARY
INGREDIENT
INFORMATION**

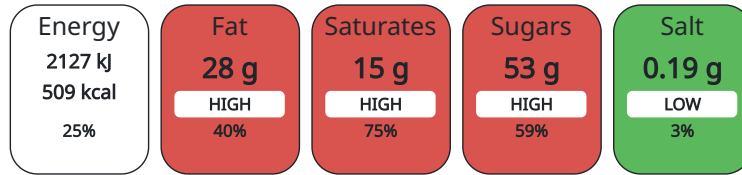
Palm Oil	Yes
Hydrogenated Vegetable Oil/Fat	No
GM Protein/DNA	No

ADDITIVES*Product Contains:***DIET SUITABILITY**

Vegan Diet	No	Vegetarian Diet	Suitable for
Halal Diet	No	Kosher Diet	No

**NUTRITIONAL
INFORMATION AS
SOLD**

Each 100g/ml portion contains:



of your reference intake.

Typical values per 100g/ml : Energy 509kcal / 2127kJ

Nutrient	per 100g	RI per 100g
Energy (kJ)	2127 kJ	25%
Energy (kcal)	509 kcal	25%
Fat	28 g	40%
of which Saturates	15 g	75%
Carbohydrate	56 g	22%
of which Sugars	53 g	59%
Fibre	2.7 g	
Protein	7.8 g	16%
Salt	0.19 g	3%

**HFSS (HIGH IN
FAT, SALT AND
SUGAR)**

HFSS Status	Yes
HFSS Score	24

**HANDLING &
STORAGE
INFORMATION****Directions For Use**

Ready To Eat

Storage Instructions

STORE IN A DRY PLACE. PROTECT FROM HEAT.

Shelf Life from Time of Production	365 Days
---	----------

ORIGIN

Product Country of Origin	United Kingdom
Origin of the Primary Ingredient	

**PRODUCT
CHARACTERISTICS
CONFIGURATION**

Standards Testing	
Case Configuration	Inner Pack Configuration
Total Quantity of Inner Components in Outer Case	48 Units
Is the Outer Case Splittable?	No

PRODUCT WEIGHTS

Inner Component	
Variable Weight Consumer Item	No
Inner Component Weight	49 g
Outer Case	
Outer Case Gross Weight	2.48 kg
Outer Case Net Weight	2.35 kg

PRODUCT DIMENSIONS

Inner Component	
Inner Component Depth	34 mm
Inner Component Width	125 mm
Inner Component Height	18 mm
Outer Case	
Outer Case Depth	218 mm
Outer Case Width	152 mm
Outer Case Height	138 mm

PALLET INFORMATION

Quantity of Cases Per Pallet Layer	32 Cases	Pallet Height	1.54 MTR
Quantity of Layers Per Pallet	10 Layers	Pallet Gross Weight	795.02 kg
Quantity of Cases Per Pallet	320 Cases		

PACKAGING

Inner Component Packaging						
Type	Materials	Weight	Recycled Material %	Recyclable	Returnable	Composite
Pack	Plastic	73.92 g				
Outer Case Packaging						
Type	Materials	Weight	Recycled Material %	Recyclable	Returnable	Composite
Case	Paper/Cardboard	100 g				

OTHER INFORMATION CONTACT INFORMATION

Address	Technical
Mondelez UK Ltd	Tomas Sakalik
PO Box 12	tomas.sakalik@mdlz.com
Bournville Lane	Publication Expert
B30 2LU	
Bournville	
Birmingham	
England	
thomas.brooks@mdlz.com	
+44 1214 582 000	

The information on the [Erudus System](#) has been supplied by the manufacturers of the products and, whilst the owners of the Erudus System take steps to ensure the information is regularly updated, they give no warranty and no guarantee that the information is accurate. Product information and ingredients may change, please always read product labels carefully in addition to using the information provided by Erudus.

We do not accept liability for any inaccuracies or incorrect information contained on this site. Please visit <http://www.erudus.com/terms-and-conditions> for full terms and conditions.