

Changed Feb 20, 2025 09:38

Reviewed Feb 20, 2025 09:38

Erudus ID 563415da2af145d0b7e67cd08319bc3b

Version 2.0

Status Published

13010

CADBURY SGL FLAKE 48CA

Cadbury Sgl Flake 48x32g

PRODUCT DESCRIPTION

The crumbliest, flakiest milk chocolate.

Brand	Mondelez UK Ltd
Manufacturer Product Code	611503
Product Type	Food
Product Category	Confectionery
Storage Type	Ambient
Erudus ID	563415da2af145d0b7e67cd08319bc3b
Specification Type	Generic

Inner Component GTIN 0000050201013

Outer Case GTIN 05000201322609



INGREDIENTS

Ingredient Declaration

MILK, sugar, cocoa mass, cocoa butter, whey powder (from MILK), vegetable fats (palm, shea), emulsifiers (E442, E476), flavourings.

Ingredient Statements

MILK SOLIDS 14% MINIMUM. COCOA SOLIDS 25% MINIMUM. CONTAINS VEGETABLE FATS IN ADDITION TO COCOA BUTTER.

ALLERGENS

Product Contains:

Celery/Celeriac	No	Mustard	No
Cereals Containing Gluten	No	Nuts (Tree)	No
Barley	No	Almond nuts	No
Oats	No	Brazil nuts	No
Rye	No	Cashew nuts	No
Wheat (including Spelt and Khorasan)	No	Hazelnuts	No
Crustacea	No	Macadamia (Queensland) nuts	No
Eggs	No	Pecan nuts	No
Fish	No	Pistachio nuts	No
Lupin	No	Walnuts	No
Milk	Yes	Peanuts	No
Molluscs	No	Sesame Seeds	No
		Soybeans	No
		Sulphur Dioxide and Sulphites	No

SUPPLEMENTARY
INGREDIENT
INFORMATION

Palm Oil	Yes
Hydrogenated Vegetable Oil/Fat	No
GM Protein/DNA	No

ADDITIVES

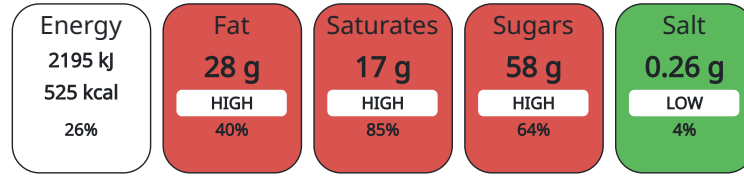
Product Contains:

DIET SUITABILITY

Vegan Diet	No	Vegetarian Diet	Suitable for
Halal Diet	No	Kosher Diet	No

NUTRITIONAL
INFORMATION AS
SOLD

Each 100g/ml portion contains:



of your reference intake.

Typical values per 100g/ml : Energy 525kcal / 2195kJ

Nutrient	per 100g	RI per 100g
Energy (kJ)	2195 kJ	26%
Energy (kcal)	525 kcal	26%
Fat	28 g	40%
of which Saturates	17 g	85%
Carbohydrate	59 g	23%
of which Sugars	58 g	64%
Fibre	2.4 g	
Protein	7.3 g	15%
Salt	0.26 g	4%

HANDLING &
STORAGE
INFORMATION

Directions For Use

Ready To Eat

Storage Instructions

STORE IN A DRY PLACE. PROTECT FROM HEAT.

Shelf Life from Time of Production 365 Days

ORIGIN

Product Country of Origin Ireland

Origin of the Primary Ingredient

PRODUCT
CHARACTERISTICS
CONFIGURATION

Standards Testing

Case Configuration

Inner Pack Configuration

Total Quantity of Inner Components in 48 Units

Outer Case

Is the Outer Case Splittable? No

PRODUCT
WEIGHTS

Inner Component

Variable Weight Consumer Item No

Inner Component Weight 32 g

Outer Case

Outer Case Gross Weight 1.67 kg

Outer Case Net Weight 1.54 kg

PRODUCT DIMENSIONS

Inner Component	
Inner Component Depth	17 mm
Inner Component Width	156 mm
Inner Component Height	19 mm
Outer Case	
Outer Case Depth	189 mm
Outer Case Width	177 mm
Outer Case Height	122 mm

PALLET INFORMATION

Quantity of Cases Per Pallet Layer	30 Cases	Pallet Type	Euro Pallet
Quantity of Layers Per Pallet	11 Layers	Pallet Height	1.5 MTR
Quantity of Cases Per Pallet	330 Cases	Pallet Gross Weight	551.57 kg

PACKAGING

Inner Component Packaging						
Type	Materials	Weight	Recycled Material %	Recyclable	Returnable	Composite
Pack	Plastic	38.54 g				
Outer Case Packaging						
Type	Materials	Weight	Recycled Material %	Recyclable	Returnable	Composite
Case	Plastic	2.04 g				
Case	Paper/Cardboard	99.5 g				

OTHER INFORMATION CONTACT INFORMATION

Address

Mondelez UK Ltd
PO Box 12
Bournville Lane
B30 2LU
Bournville
Birmingham
England

thomas.brooks@mdlz.com
+44 1214 582 000

Technical

Tomas Sakalik
tomas.sakalik@mdlz.com
Publication Expert

The information on the [Erudus System](#) has been supplied by the manufacturers of the products and, whilst the owners of the Erudus System take steps to ensure the information is regularly updated, they give no warranty and no guarantee that the information is accurate. Product information and ingredients may change, please always read product labels carefully in addition to using the information provided by Erudus.

We do not accept liability for any inaccuracies or incorrect information contained on this site.
Please visit <http://www.erudus.com/terms-and-conditions> for full terms and conditions.