

Changed Aug 19, 2025 13:47

Reviewed Aug 19, 2025 13:47

Erudus ID 6e55467899c64b3fa1802675ac8a4e21

Version 2.0

Status Published

13025

TREBOR EXTRA STRONG 41.3G PEPPERMINT 40CA

Trebor Extra Strong 41.3g Peppermint 40x41.3g

PRODUCT DESCRIPTION

Mint flavoured sweets.

Brand	Mondelez UK Ltd
Manufacturer Product Code	611460
Product Type	Food
Product Category	Confectionery
Storage Type	Ambient
Erudus ID	6e55467899c64b3fa1802675ac8a4e21
Specification Type	Generic

Inner Component GTIN 00000050833917

Outer Case GTIN 05000105002331

INGREDIENTS

Ingredient Declaration

Sugar, glucose syrup, starch, natural mint flavouring, gelatine, stabiliser (E415).

ALLERGENS

Product Contains:

Celery/Celeriac	No	Mustard	No
Cereals Containing Gluten	No	Nuts (Tree)	No
Barley	No	Almond nuts	No
Oats	No	Brazil nuts	No
Rye	No	Cashew nuts	No
Wheat (including Spelt and Khorasan)	No	Hazelnuts	No
Crustacea	No	Macadamia (Queensland) nuts	No
Eggs	No	Pecan nuts	No
Fish	No	Pistachio nuts	No
Lupin	No	Walnuts	No
Milk	No	Peanuts	No
Molluscs	No	Sesame Seeds	No
		Soybeans	No
		Sulphur Dioxide and Sulphites	No

SUPPLEMENTARY INGREDIENT INFORMATION

Palm Oil	No
Hydrogenated Vegetable Oil/Fat	No
GM Protein/DNA	No

ADDITIVES

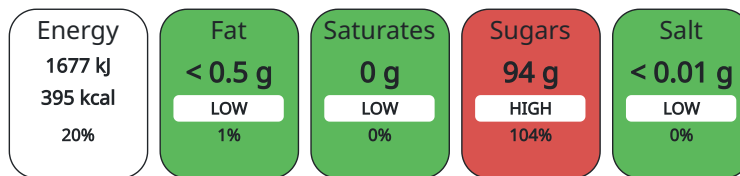
Product Contains:

DIET SUITABILITY

Vegan Diet	No	Vegetarian Diet	No
Halal Diet	No	Kosher Diet	No

NUTRITIONAL
INFORMATION AS
SOLD

Each 100g/ml portion contains:



of your reference intake.

Typical values per 100g/ml : Energy 395kcal / 1677kJ

Nutrient	per 100g	RI per 100g
Energy (kJ)	1677 kJ	20%
Energy (kcal)	395 kcal	20%
Fat	< 0.5 g	1%
of which Saturates	0 g	
Carbohydrate	98 g	38%
of which Sugars	94 g	104%
Protein	0.3 g	1%
Salt	< 0.01 g	0%

Serving Size Description	Approx. 17 sweets per roll.
---------------------------------	--------------------------------

HANDLING &
STORAGE
INFORMATION**Directions For Use**

Ready To Eat

Storage Instructions

STORE IN A COOL, DRY PLACE

Shelf Life from Time of Production	365 Days
---	----------

ORIGIN

Product Country of Origin	United Kingdom
Origin of the Primary Ingredient	Not Applicable

PRODUCT
CHARACTERISTICS
CONFIGURATION

Standards Testing

Case Configuration

Inner Pack Configuration

Total Quantity of Inner Components in	40 Units
--	----------

Outer Case

Is the Outer Case Splittable?	No
--------------------------------------	----

PRODUCT
WEIGHTS

Inner Component

Variable Weight Consumer Item	No
--------------------------------------	----

Inner Component Weight	41.3 g
-------------------------------	--------

Outer Case

Outer Case Gross Weight	1.74 kg
--------------------------------	---------

Outer Case Net Weight	1.65 kg
------------------------------	---------

PRODUCT DIMENSIONS

Inner Component	
Inner Component Depth	20 mm
Inner Component Width	110 mm
Inner Component Height	20 mm
Outer Case	
Outer Case Depth	241 mm
Outer Case Width	117 mm
Outer Case Height	95 mm

PALLET INFORMATION

Quantity of Cases Per Pallet Layer	40 Cases	Pallet Type	Euro Pallet
Quantity of Layers Per Pallet	12 Layers	Pallet Height	1.3 MTR
Quantity of Cases Per Pallet	480 Cases	Pallet Gross Weight	835.58 kg

PACKAGING

Inner Component Packaging						
Type	Materials	Weight	Recycled Material %	Recyclable	Returnable	Composite
Pack	Plastic	42.8 g				
Outer Case Packaging						
Type	Materials	Weight	Recycled Material %	Recyclable	Returnable	Composite
Case	Plastic	3.23 g				
Case	Paper/Cardboard	46 g				

OTHER INFORMATION CONTACT INFORMATION

Address

Mondelez UK Ltd
 PO Box 12
 Bournville Lane
 B30 2LU
 Bournville
 Birmingham
 England

thomas.brooks@mdlz.com
 +44 1214 582 000

Technical

Tomas Sakalik
 tomas.sakalik@mdlz.com
 Publication Expert

The information on the [Erudus System](#) has been supplied by the manufacturers of the products and, whilst the owners of the Erudus System take steps to ensure the information is regularly updated, they give no warranty and no guarantee that the information is accurate. Product information and ingredients may change, please always read product labels carefully in addition to using the information provided by Erudus.

We do not accept liability for any inaccuracies or incorrect information contained on this site. Please visit <http://www.erudus.com/terms-and-conditions> for full terms and conditions.