

Changed Oct 15, 2024 13:11

Reviewed Oct 15, 2024 13:11

Erudus ID b2627f27f6b343aea3a058a762c3a5e2

Version 2.0

Status Published

13037

CADBURY 48G WISPA GOLD 48CA

Cadbury 48g Wispa Gold 48x48g

PRODUCT DESCRIPTION

CADBURY WISPA CHOCOLATE GOLD

Brand	Mondelez UK Ltd
Manufacturer Product Code	913457
Product Type	Food
Product Category	Confectionery
Storage Type	Ambient
Erudus ID	b2627f27f6b343aea3a058a762c3a5e2
Specification Type	Generic

Inner Component GTIN 07622210448101

Outer Case GTIN 07622210448088



INGREDIENTS

Ingredient Declaration

Ingredients: MILK, sugar, glucose syrup, cocoa butter, vegetable fats (palm, shea), glucose-fructose syrup, cocoa mass, whey powder (from MILK), emulsifiers (E442, E471), salt, sodium carbonate, flavourings.

ALLERGENS

Product Contains:

Celery/Celeriac	No	Mustard	No
Cereals Containing Gluten	No	Nuts (Tree)	May Contain
Barley	No	Almond nuts	May Contain
Oats	No	Brazil nuts	May Contain
Rye	No	Cashew nuts	May Contain
Wheat (including Spelt and Khorasan)	No	Hazelnuts	May Contain
Crustacea	No	Macadamia (Queensland) nuts	May Contain
Eggs	No	Pecan nuts	May Contain
Fish	No	Pistachio nuts	May Contain
Lupin	No	Walnuts	May Contain
Milk	Yes	Peanuts	No
Molluscs	No	Sesame Seeds	No
		Soybeans	No
		Sulphur Dioxide and Sulphites	No

Risk Source:

Additional Allergen Information

MAY CONTAIN NUTS.

SUPPLEMENTARY
INGREDIENT
INFORMATION

Palm Oil	Yes
Hydrogenated Vegetable Oil/Fat	No
GM Protein/DNA	No

ADDITIVES

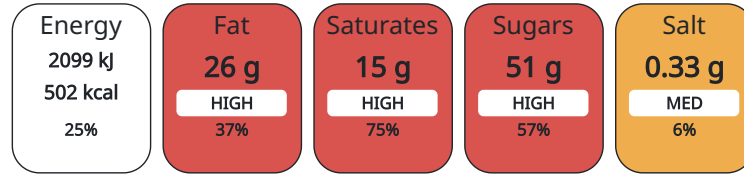
Product Contains:

DIET SUITABILITY

Vegan Diet	No	Vegetarian Diet	Suitable for
Halal Diet	No	Kosher Diet	No

NUTRITIONAL
INFORMATION AS
SOLD

Each 100g/ml portion contains:



of your reference intake.

Typical values per 100g/ml : Energy 502kcal / 2099kJ

Nutrient	per 100g	RI per 100g
Energy (kJ)	2099 kJ	25%
Energy (kcal)	502 kcal	25%
Fat	26 g	37%
of which Saturates	15 g	75%
Carbohydrate	60 g	23%
of which Sugars	51 g	57%
Fibre	1.5 g	
Protein	4.7 g	9%
Salt	0.33 g	6%

HANDLING &
STORAGE
INFORMATION

Directions For Use

Ready To Eat

Storage Instructions

STORE IN A DRY PLACE. PROTECT FROM HEAT.

Shelf Life from Time of Production 275 Days

ORIGIN

Product Country of Origin United Kingdom

Origin of the Primary Ingredient

PRODUCT
CHARACTERISTICS
CONFIGURATION

Standards Testing

Case Configuration

Inner Pack Configuration

Total Quantity of Inner Components in 48 Units

Outer Case

Is the Outer Case Splittable? No

PRODUCT
WEIGHTS

Inner Component

Variable Weight Consumer Item No

Inner Component Weight 48 g

Outer Case

Outer Case Gross Weight 2.46 kg

Outer Case Net Weight 2.3 kg

PRODUCT DIMENSIONS

Inner Component	
Inner Component Depth	19 mm
Inner Component Width	120 mm
Inner Component Height	30 mm
Outer Case	
Outer Case Depth	277 mm
Outer Case Width	154 mm
Outer Case Height	110 mm

PALLET INFORMATION

Quantity of Cases Per Pallet Layer	24 Cases	Pallet Type	Euro Pallet
Quantity of Layers Per Pallet	12 Layers	Pallet Height	1.46 MTR
Quantity of Cases Per Pallet	288 Cases	Pallet Gross Weight	708.48 kg

PACKAGING

Inner Component Packaging						
Type	Materials	Weight	Recycled Material %	Recyclable	Returnable	Composite
Pack	Plastic	30 g				
Outer Case Packaging						
Type	Materials	Weight	Recycled Material %	Recyclable	Returnable	Composite
Case	Paper/Cardboard	124.3 g				

OTHER INFORMATION CONTACT INFORMATION

Address

Mondelez UK Ltd
 PO Box 12
 Bournville Lane
 B30 2LU
 Bournville
 Birmingham
 England

thomas.brooks@mdlz.com
 +44 1214 582 000

Technical

Tomas Sakalik
 tomas.sakalik@mdlz.com
 Publication Expert

The information on the [Erudus System](#) has been supplied by the manufacturers of the products and, whilst the owners of the Erudus System take steps to ensure the information is regularly updated, they give no warranty and no guarantee that the information is accurate. Product information and ingredients may change, please always read product labels carefully in addition to using the information provided by Erudus.

We do not accept liability for any inaccuracies or incorrect information contained on this site. Please visit <http://www.erudus.com/terms-and-conditions> for full terms and conditions.