

Changed Aug 02, 2024 13:55

Reviewed Aug 02, 2024 13:55

Erudus ID 9e1534b62a694858b7c4a8d0701f9766

Version 2.0

Status Published

13064

CADBURY 49G STARBAR 32CA

Cadbury 49g Starbar 32x49g

PRODUCT DESCRIPTION

CADBURY STARBAR CHOCOLATE BAR

Brand	Mondelez UK Ltd
Manufacturer Product Code	960986
Product Type	Food
Product Category	Confectionery
Storage Type	Ambient
Erudus ID	9e1534b62a694858b7c4a8d0701f9766
Specification Type	Generic

Inner Component GTIN 05034660522775

Outer Case GTIN 05034660043003



INGREDIENTS

Ingredient Declaration

MILK, PEANUTS, glucose syrup, sugar, vegetable fats (palm, shea), whey powder (from MILK), cocoa butter, cocoa mass, skimmed MILK powder, humectant (glycerol), rice flour, WHEAT flour (with added calcium, iron, niacin, thiamin), emulsifiers (E442, E471, E476), salt, flavourings, raising agent (sodium carbonates), BARLEY malt syrup, BARLEY malt extract.

ALLERGENS

Product Contains:

Celery/Celeriac	No	Mustard	No
Cereals Containing Gluten	Yes	Nuts (Tree)	No
Barley	Yes	Almond nuts	No
Oats	No	Brazil nuts	No
Rye	No	Cashew nuts	No
Wheat (including Spelt and Khorasan)	Yes	Hazelnuts	No
Crustacea	No	Macadamia (Queensland) nuts	No
Eggs	No	Pecan nuts	No
Fish	No	Pistachio nuts	No
Lupin	No	Walnuts	No
Milk	Yes	Peanuts	Yes
Molluscs	No	Sesame Seeds	No
		Soybeans	No
		Sulphur Dioxide and Sulphites	No

SUPPLEMENTARY
INGREDIENT
INFORMATION

Palm Oil	Yes
Hydrogenated Vegetable Oil/Fat	No
GM Protein/DNA	No

ADDITIVES

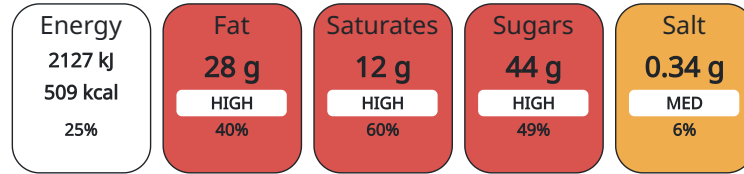
Product Contains:

DIET SUITABILITY

Vegan Diet	No	Vegetarian Diet	Suitable for
Halal Diet	No	Kosher Diet	No

NUTRITIONAL
INFORMATION AS
SOLD

Each 100g/ml portion contains:



of your reference intake.

Typical values per 100g/ml : Energy 509kcal / 2127kJ

Nutrient	per 100g	RI per 100g
Energy (kJ)	2127 kJ	25%
Energy (kcal)	509 kcal	25%
Fat	28 g	40%
of which Saturates	12 g	60%
Carbohydrate	54 g	21%
of which Sugars	44 g	49%
Fibre	2.7 g	
Protein	10 g	20%
Salt	0.34 g	6%

HANDLING &
STORAGE
INFORMATION

Directions For Use

Ready To Eat

Storage Instructions

STORE IN A DRY PLACE. PROTECT FROM HEAT.

Shelf Life from Time of Production 365 Days

ORIGIN

Product Country of Origin Ireland

Origin of the Primary Ingredient

PRODUCT
CHARACTERISTICS
CONFIGURATION

Standards Testing

Case Configuration

Inner Pack Configuration

Total Quantity of Inner Components in 32 Units

Outer Case

Is the Outer Case Splittable? No

PRODUCT
WEIGHTS

Inner Component

Variable Weight Consumer Item No

Inner Component Weight 49 g

Outer Case

Outer Case Gross Weight 1.69 kg

Outer Case Net Weight 1.57 kg

PRODUCT DIMENSIONS

Inner Component	
Inner Component Depth	34 mm
Inner Component Width	115 mm
Inner Component Height	23 mm
Outer Case	
Outer Case Depth	280 mm
Outer Case Width	140 mm
Outer Case Height	98 mm

PALLET INFORMATION

Quantity of Cases Per Pallet Layer	28 Cases	Pallet Height	1.65 MTR
Quantity of Layers Per Pallet	15 Layers	Pallet Gross Weight	705.18 kg
Quantity of Cases Per Pallet	420 Cases		

PACKAGING

Inner Component Packaging						
Type	Materials	Weight	Recycled Material %	Recyclable	Returnable	Composite
Pack	Plastic	24.77 g				
Outer Case Packaging						
Type	Materials	Weight	Recycled Material %	Recyclable	Returnable	Composite
Case	Paper/Cardboard	86 g				
Case	Other	1 g				

OTHER INFORMATION CONTACT INFORMATION

Address

Mondelez UK Ltd
 PO Box 12
 Bournville Lane
 B30 2LU
 Bournville
 Birmingham
 England

thomas.brooks@mdlz.com
 +44 1214 582 000

Technical

Tomas Sakalik
 tomas.sakalik@mdlz.com
 Publication Expert

The information on the [Erudus System](#) has been supplied by the manufacturers of the products and, whilst the owners of the Erudus System take steps to ensure the information is regularly updated, they give no warranty and no guarantee that the information is accurate. Product information and ingredients may change, please always read product labels carefully in addition to using the information provided by Erudus.

We do not accept liability for any inaccuracies or incorrect information contained on this site. Please visit <http://www.erudus.com/terms-and-conditions> for full terms and conditions.