

Changed Oct 20, 2025 09:32

Reviewed Oct 20, 2025 09:32

Erudus ID 2f543548b43f467dbd96b9ef1cb90098

Version 2.0

Status Published

100047

Kinder Bueno Classic 43g bar x 30

Kinder Bueno Classic 43g Bar X 30 30x

PRODUCT DESCRIPTION

The Kinder Bueno Classic 43g bar is a delicate chocolate bar with an indulgent taste. Each melt in the mouth piece promises creamy hazelnut, smooth chocolate and crispy wafer for your customers to enjoy. It comes in two individually wrapped portions.

| | |
|---------------------------|----------------------------------|
| Brand | Ferrero UK Ltd |
| Manufacturer Product Code | XGB514001 |
| Product Type | Food |
| Product Category | Confectionery |
| Storage Type | Ambient |
| Erudus ID | 2f543548b43f467dbd96b9ef1cb90098 |
| Specification Type | Generic |



Outer Case GTIN

08000500073698



INGREDIENTS

Ingredient Declaration

MILK chocolate 31,5% (sugar, cocoa butter, cocoa mass, skimmed **MILK** powder, anhydrous **BUTTER**, emulsifier lecithins (**SOYA** and/or sunflower), vanillin), sugar, palm oil, **WHEAT** flour, **HAZELNUTS** (10,5%), skimmed **MILK** powder, **MILK** powder, chocolate (sugar, cocoa mass, cocoa butter, emulsifier lecithins (**SOYA** and/or sunflower), vanillin), fat-reduced cocoa, emulsifier lecithins (**SOYA** and/or sunflower), raising agent (sodium bicarbonate), salt, vanillin.

ADDITIVES: emulsifier lecithins (**SOYA** and/or sunflower), raising agent (sodium bicarbonate).

ALLERGENS

Product Contains:

| | | | |
|--------------------------------------|-----|-------------------------------|-----|
| Celery/Celeriac | No | Mustard | No |
| Cereals Containing Gluten | Yes | Nuts (Tree) | Yes |
| Barley | No | Almond nuts | No |
| Oats | No | Brazil nuts | No |
| Rye | No | Cashew nuts | No |
| Wheat (including Spelt and Khorasan) | Yes | Hazelnuts | Yes |
| Crustacea | No | Macadamia (Queensland) nuts | No |
| Eggs | No | Pecan nuts | No |
| Fish | No | Pistachio nuts | No |
| Lupin | No | Walnuts | No |
| Milk | Yes | Peanuts | No |
| Molluscs | No | Sesame Seeds | No |
| | | Soybeans | Yes |
| | | Sulphur Dioxide and Sulphites | No |

SUPPLEMENTARY INGREDIENT INFORMATION

| | |
|--------------------------------|-----|
| Palm Oil | Yes |
| Hydrogenated Vegetable Oil/Fat | No |
| GM Protein/DNA | No |

ADDITIVES

Product Contains:

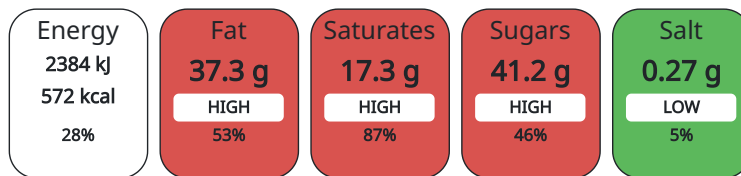
| | | | |
|------------------------------|----|--------------------------|----|
| Artificial Antioxidants | No | Artificial Flavourings | No |
| Artificial Colours | No | Artificial Preservatives | No |
| Artificial Flavour Enhancers | No | Artificial Sweeteners | No |

DIET SUITABILITY

| | | | |
|------------|----|-----------------|--------------|
| Vegan Diet | No | Vegetarian Diet | Suitable for |
| Halal Diet | No | Kosher Diet | No |

NUTRITIONAL INFORMATION AS SOLD

Each 100g/ml portion contains:



of your reference intake.

Typical values per 100g/ml : Energy 572kcal / 2384kj

| Nutrient | per 100g | RI per 100g |
|--------------------|----------|-------------|
| Energy (kJ) | 2384 kJ | 28% |
| Energy (kcal) | 572 kcal | 29% |
| Fat | 37.3 g | 53% |
| of which Saturates | 17.3 g | 87% |
| Carbohydrate | 49.5 g | 19% |
| of which Sugars | 41.2 g | 46% |
| Protein | 8.6 g | 17% |
| Salt | 0.27 g | 5% |

HANDLING & STORAGE INFORMATION

Directions For Use

Each melt in the mouth piece promises creamy hazelnut, smooth chocolate and crispy wafer for your customers to enjoy. It comes in two individually wrapped portions.

Storage Instructions

Store at room temperature

Shelf Life from Time of Production 240 Days

ACCREDITATIONS/ CERTIFICATIONS/ ASSURANCE SCHEMES ORIGIN

IFS Food Standard

Roundtable of Sustainable Palm Oil (RSPO)

Product Country of Origin France

Origin of the Primary Ingredient Italy

PRODUCT CHARACTERISTICS

Standards Testing

Do you undertake trend analysis of microbiological results? No

Is shelf life testing undertaken? Yes

CONFIGURATION

Case Configuration

Inner Pack Configuration

Total Quantity of Inner Components in Outer Case 30 Units

Is the Outer Case Splittable? No

PRODUCT WEIGHTS

Inner Component

Outer Case

Outer Case Gross Weight 1.56 kg

Outer Case Net Weight 1.32 kg

PRODUCT DIMENSIONS

Inner Component

Outer Case

Outer Case Depth 300 mm

Outer Case Width 170 mm

Outer Case Height 120 mm

PALLET INFORMATION

Quantity of Cases Per Pallet Layer 8 Cases

Pallet Height 1.56 MTR

Quantity of Layers Per Pallet 8 Layers

Quantity of Cases Per Pallet 234 Cases

PACKAGING

Inner Component Packaging

| Type | Materials | Weight | Recycled Material % | Recyclable | Returnable | Composite |
|------|-----------|--------|---------------------|------------|------------|-----------|
| Pack | Plastic | 55 g | | | | |

Outer Case Packaging

| Type | Materials | Weight | Recycled Material % | Recyclable | Returnable | Composite |
|------|-----------------|--------|---------------------|------------|------------|-----------|
| Case | Paper/Cardboard | 142 g | | | | |

Transport Packaging

| Type | Materials | Weight | Recycled Material % | Recyclable | Returnable | Composite |
|-------|-----------|--------|---------------------|------------|------------|-----------|
| Other | Plastic | 55 g | | | | |

OTHER INFORMATION

Manufacturer Comments

UK's No.1 singles countlines*, the Kinder Bueno Classic 43g bar is a delicate chocolate bar with an indulgent taste. *Source: Nielsen Total Coverage Countlines MAT WE 30 Jan 2021

CONTACT
INFORMATION

Address

Ferrero UK Ltd
889 Greenford Rd
UB6 0HE
Greenford
England

zareen.deboo@ferrero.com
07927565564

The information on the [Erudus System](#) has been supplied by the manufacturers of the products and, whilst the owners of the Erudus System take steps to ensure the information is regularly updated, they give no warranty and no guarantee that the information is accurate. Product information and ingredients may change, please always read product labels carefully in addition to using the information provided by Erudus.

We do not accept liability for any inaccuracies or incorrect information contained on this site.
Please visit <http://www.erudus.com/terms-and-conditions> for full terms and conditions.