

Changed Mar 25, 2024 12:54

Reviewed Mar 25, 2024 12:54

Erudus ID 8d18609207a142aa90de32e603ce15a9

Version 1.0

Status Published

14045

CAD 130G ECLAIRS CHOC BAG 12CA

Cad 130g Eclrs Choc Bag

PRODUCT DESCRIPTION

Caramels with Milk Chocolate Centres (18%).

| | |
|---------------------------|----------------------------------|
| Brand | Mondelez UK Ltd |
| Manufacturer Product Code | 648324 |
| Product Type | Food |
| Product Category | Confectionery |
| Storage Type | Ambient |
| Erudus ID | 8d18609207a142aa90de32e603ce15a9 |
| Specification Type | Generic |

Inner Component GTIN 07622210117779

Outer Case GTIN 07622210117755



INGREDIENTS

Ingredient Declaration

Glucose syrup, sugar, palm oil, skimmed MILK powder, cocoa butter, cocoa mass, whey permeate powder (from MILK), MILK fat, emulsifiers (E 471, E 442), salt, flavourings, acidity regulator (sodium carbonates).

ALLERGENS

Product Contains:

| | | | |
|--------------------------------------|-----|-------------------------------|----|
| Celery/Celериac | No | Mustard | No |
| Cereals Containing Gluten | No | Nuts (Tree) | No |
| Barley | No | Almond nuts | No |
| Oats | No | Brazil nuts | No |
| Rye | No | Cashew nuts | No |
| Wheat (including Spelt and Khorasan) | No | Hazelnuts | No |
| Crustacea | No | Macadamia (Queensland) nuts | No |
| Eggs | No | Pecan nuts | No |
| Fish | No | Pistachio nuts | No |
| Lupin | No | Walnuts | No |
| Milk | Yes | Peanuts | No |
| Molluscs | No | Sesame Seeds | No |
| | | Soybeans | No |
| | | Sulphur Dioxide and Sulphites | No |

FREE FROM CLAIMS

| | | | |
|---------------------------|-----|---------------------------|-----|
| Free From Barley | Yes | Free From Mustard | Yes |
| Free From Celery/Celeriac | Yes | Free From Nuts | Yes |
| Free From Crustacea | Yes | Free From Oats | Yes |
| Free From Eggs | Yes | Free From Peanuts | Yes |
| Free From Fish | Yes | Free From Rye | Yes |
| Gluten-Free | Yes | Free From Sesame | Yes |
| Free From Lupin | Yes | Free From Soybeans | Yes |
| Free From Molluscs | Yes | Free From Sulphur Dioxide | Yes |
| | | Very Low Gluten | Yes |
| | | Free From Wheat | Yes |

SUPPLEMENTARY INGREDIENT INFORMATION

| | |
|----------------|-----|
| Palm Oil | Yes |
| GM Protein/DNA | No |

ADDITIVES

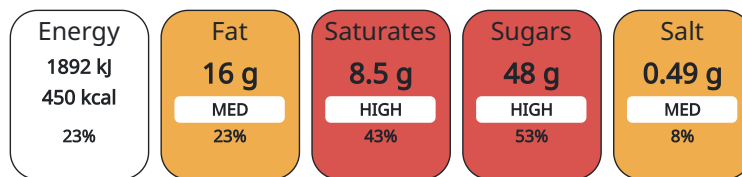
Product Contains:

DIET SUITABILITY

| | | | |
|------------|----|-----------------|--------------|
| Vegan Diet | No | Vegetarian Diet | Suitable for |
| Halal Diet | No | Kosher Diet | No |

NUTRITIONAL INFORMATION AS SOLD

Each 100g/ml portion contains:



of your reference intake.

Typical values per 100g/ml : Energy 450kcal / 1892kJ

| Nutrient | per 100g | RI per 100g |
|--------------------|----------|-------------|
| Energy (kJ) | 1892 kJ | 23% |
| Energy (kcal) | 450 kcal | 23% |
| Fat | 16 g | 23% |
| of which Saturates | 8.5 g | 43% |
| Carbohydrate | 71 g | 27% |
| of which Sugars | 48 g | 53% |
| Protein | 4 g | 8% |
| Salt | 0.49 g | 8% |

| | |
|--------------------------|--|
| Serving Size Description | 1 sweet 7.2 g. Approx. 18 sweets per bag. |
|--------------------------|--|

HFSS (HIGH IN FAT, SALT AND SUGAR)

| | |
|-------------|-----|
| HFSS Status | Yes |
| HFSS Score | 25 |

HANDLING & STORAGE INFORMATION

Directions For Use
CHOKING WARNING: NOT SUITABLE FOR CHILDREN UNDER 4

Storage Instructions
Store in a cool, dry place.

| | |
|------------------------------------|----------|
| Shelf Life from Time of Production | 365 Days |
| Shelf Life From Opening | 120 Days |

| | | | | |
|---------------------------------------|---|-----------|---|-----------|
| ORIGIN | Product Country of Origin | Poland | | |
| | Origin of the Primary Ingredient | | | |
| PRODUCT CHARACTERISTICS CONFIGURATION | Standards Testing | | | |
| | Case Configuration | | Inner Pack Configuration | |
| | Total Quantity of Inner Components in Outer Case | 12 Units | | |
| PRODUCT WEIGHTS | Inner Component | | | |
| | Variable Weight Consumer Item | Yes | | |
| | Inner Component Weight | 130 g | | |
| | Outer Case | | | |
| | Outer Case Gross Weight | 1.64 kg | | |
| | Outer Case Net Weight | 1.56 kg | | |
| PRODUCT DIMENSIONS | Inner Component | | | |
| | Inner Component Depth | 30 mm | | |
| | Inner Component Width | 140 mm | | |
| | Inner Component Height | 175 mm | | |
| | Outer Case | | | |
| | Outer Case Depth | 281 mm | | |
| | Outer Case Width | 196 mm | | |
| | Outer Case Height | 163 mm | | |
| PALLET INFORMATION | Quantity of Cases Per Pallet Layer | 20 Cases | Pallet Height | 2.12 MTR |
| | Quantity of Layers Per Pallet | 12 Layers | Pallet Gross Weight | 393.12 kg |
| | Quantity of Cases Per Pallet | 240 Cases | | |
| OTHER INFORMATION CONTACT INFORMATION | Address | | Technical | |
| | Mondelez UK Ltd PO Box 12 Bournville Lane B30 2LU Bournville Birmingham England thomas.brooks@mdlz.com +44 1214 582 000 | | Tomas Sakalik tomas.sakalik@mdlz.com Publication Expert | |

The information on the [Erudus System](#) has been supplied by the manufacturers of the products and, whilst the owners of the Erudus System take steps to ensure the information is regularly updated, they give no warranty and no guarantee that the information is accurate. Product information and ingredients may change, please always read product labels carefully in addition to using the information provided by Erudus.

We do not accept liability for any inaccuracies or incorrect information contained on this site.
Please visit <http://www.erudus.com/terms-and-conditions> for full terms and conditions.