

15057

Nobby's Nuts Sweet Chilli Coated Peanuts 20 x 40g

Nobby's Nuts Sweet Chilli Coated Peanuts 20x40g

PRODUCT DESCRIPTION

Sweet Chilli Flavour Coated Peanuts

Brand	Walkers Snacks Limited (PepsiCo)
Manufacturer Product Code	300002546
Product Type	Food
Product Category	Crisps & Snacks
Storage Type	Ambient
Erudus ID	ca1ccd0268a842689883e60a7c11aa52
Specification Type	Legacy



Inner Component GTIN	5000328251950
Outer Case GTIN	5000328203317



INGREDIENTS

Ingredient Declaration

PEANUTS (55%), Starch (contains **WHEAT**), Sunflower Oil, Sugar, Sweet Chilli Seasoning [Flavourings, **BARLEY** Malt Extract, Onion Powder, Garlic Powder, Red Pepper Powder, Ginger Powder, Paprika Extract, Black Pepper Oleoresin, Flavour Enhancers (Monosodium Glutamate, Disodium Guanylate, Disodium Inosinate), Acid (Citric Acid), Yeast Extract], Salt, Colour (Paprika Extract), Turmeric Extract

ALLERGENS

Product Contains:

Celery/Celery	May Contain	Mustard	May Contain
Cereals Containing Gluten	Yes	Nuts (Tree)	May Contain
Barley	Yes	Almond nuts	May Contain
Oats	No	Brazil nuts	May Contain
Rye	No	Cashew nuts	May Contain
Wheat (including Spelt and Khorasan)	Yes	Hazelnuts	May Contain
Crustacea	No	Macadamia (Queensland) nuts	May Contain
Eggs	No	Pecan nuts	May Contain
Fish	No	Pistachio nuts	May Contain
Lupin	No	Walnuts	May Contain
Milk	May Contain	Peanuts	Yes
Molluscs	No	Sesame Seeds	No
		Soybeans	May Contain
		Sulphur Dioxide and Sulphites	No

Risk Source:

Additional Allergen Information

Contains: Barley, Peanuts, Wheat May Contain: Celery, Cereals Containing Gluten, Milk, Mustard, Nuts, Soya

**SUPPLEMENTARY
INGREDIENT
INFORMATION**

Palm Oil	No
Hydrogenated Vegetable Oil/Fat	Yes
GM Protein/DNA	No

ADDITIVES

Product Contains:

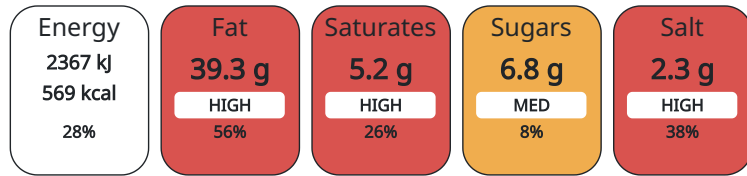
Artificial Antioxidants	No	Artificial Flavourings	Yes
Artificial Colours	Yes	Artificial Preservatives	Yes
Artificial Flavour Enhancers	Yes	Artificial Sweeteners	No

DIET SUITABILITY

Suitable for Coeliacs	No	Halal Diet	No
Kosher Diet	No	Vegetarian Diet	Suitable for
Vegan Diet	No		

**NUTRITIONAL
INFORMATION**

Each 100g/ml portion contains:



of your reference intake.

Typical values per 100g/ml : Energy 569kcal / 2367kJ

Nutrient	per 100g/ml	RI per 100g/ml
Energy (kJ)	2367 kJ	28%
Energy (kcal)	569 kcal	28%
Fat	39.3 g	56%
of which Saturates	5.2 g	26%
Carbohydrate	38.4 g	15%
of which Sugars	6.8 g	8%
Fibre	2.8 g	
Protein	14.2 g	28%
Salt	2.3 g	38%

**HANDLING &
STORAGE
INFORMATION**

Directions For Use

This pack contains 1 serving

Storage Instructions

Store in a cool dry place

Shelf Life from Time of Production	182 Days
---	----------

ORIGIN

Product Country of Origin	United Kingdom
----------------------------------	----------------

**PRODUCT
CHARACTERISTICS
CONFIGURATION**

Standards Testing	
Case Configuration	Inner Pack Configuration
Total Quantity of Inner Components in Outer Case	20 Units

PRODUCT WEIGHTS

Inner Component	
Variable Weight Consumer Item	No
Inner Component Weight	40 g
Outer Case	
Outer Case Gross Weight	1.3 kg
Outer Case Net Weight	0.96 kg

PRODUCT DIMENSIONS

Inner Component	
Inner Component Depth	40 mm
Inner Component Width	140 mm
Inner Component Height	200 mm
Outer Case	
Outer Case Depth	180 mm
Outer Case Width	394 mm
Outer Case Height	494 mm

PALLET INFORMATION

Quantity of Cases Per Pallet Layer	6 Cases	Pallet Height	1.98 MTR
Quantity of Layers Per Pallet	10 Layers	Pallet Gross Weight	279.2 kg
Quantity of Cases Per Pallet	60 Cases		

PACKAGING

Outer Case Packaging						
Type	Materials	Weight	Recycled Material %	Recyclable	Returnable	Composite
Bag	Plastic	1800 g				

OTHER INFORMATION CONTACT INFORMATION

Address	Commercial
Walkers Snacks Limited (PepsiCo)	Olivia Greenaway@pepsico.com
450 South Oak Way	olivia.greenaway@pepsico.com
Green Park	
RG2 6UW	
Reading	
United Kingdom	
karthick.s@pepsico.com	
07824608485	

The information on the [Erudus System](#) has been supplied by the manufacturers of the products and, whilst the owners of the Erudus System take steps to ensure the information is regularly updated, they give no warranty and no guarantee that the information is accurate. Product information and ingredients may change, please always read product labels carefully in addition to using the information provided by Erudus.

We do not accept liability for any inaccuracies or incorrect information contained on this site. Please visit <http://www.erudus.com/terms-and-conditions> for full terms and conditions.