

Changed Jan 31, 2024 05:02

Reviewed Jan 31, 2024 05:02

Erudus ID a43d4260162a43bebbc372d0c4315390

Version 2.0

Status Published

15058

# Nobby's Nuts Classic Salted Peanuts 50g x 24

Nobby's Nuts Classic Salted Peanuts 50g 24x50g

## PRODUCT DESCRIPTION

Nobby's Nuts Salted 50g

Brand	<a href="#">Walkers Snacks Limited (PepsiCo)</a>
Manufacturer Product Code	300001193
Product Type	Food
Product Category	Nuts and Seeds
Storage Type	Ambient
Erudus ID	a43d4260162a43bebbc372d0c4315390
Specification Type	Generic



Inner Component GTIN	05000328514536
Outer Case GTIN	05000328398396



## INGREDIENTS

### Ingredient Declaration

Fried PEANUTS, Sunflower Oil, Salt

## ALLERGENS

### Product Contains:

Celery/Celeriac	May Contain	Mustard	May Contain
Cereals Containing Gluten	May Contain	Nuts (Tree)	May Contain
Barley	May Contain	Almond nuts	May Contain
Oats	No	Brazil nuts	May Contain
Rye	No	Cashew nuts	May Contain
Wheat (including Spelt and Khorasan)	May Contain	Hazelnuts	May Contain
Crustacea	No	Macadamia (Queensland) nuts	May Contain
Eggs	No	Pecan nuts	May Contain
Fish	No	Pistachio nuts	May Contain
Lupin	No	Walnuts	May Contain
Milk	May Contain	Peanuts	Yes
Molluscs	No	Sesame Seeds	No
		Soybeans	May Contain
		Sulphur Dioxide and Sulphites	No

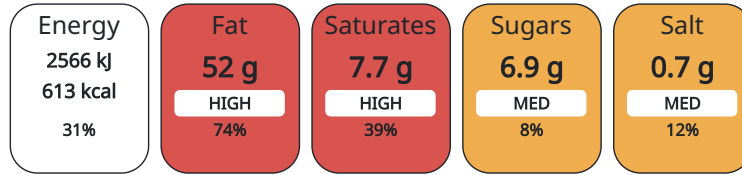
Risk Source:

**Additional Allergen Information**

Contains: See highlighted ingredients

**SUPPLEMENTARY  
INGREDIENT  
INFORMATION  
ADDITIVES****GM Protein/DNA** No*Product Contains:***Artificial Antioxidants** No**DIET SUITABILITY****Vegan Diet** No **Vegetarian Diet** Suitable for**Halal Diet** No **Kosher Diet** No**NUTRITIONAL  
INFORMATION AS  
SOLD**

Each 100g/ml portion contains:



of your reference intake.

Typical values per 100g/ml : Energy 613kcal / 2566kJ

Nutrient	per 100g	RI per 100g
Energy (kJ)	2566 kJ	31%
Energy (kcal)	613 kcal	31%
Fat	52 g	74%
of which Saturates	7.7 g	39%
Carbohydrate	11 g	4%
of which Sugars	6.9 g	8%
Fibre	6.8 g	
Protein	26 g	52%
Salt	0.7 g	12%

**HANDLING &  
STORAGE  
INFORMATION****Directions For Use**

This pack contains 1 serving

**Storage Instructions**

Store in a cool, dry place.

**Shelf Life from Time of Production** 182 Days**ORIGIN****Product Country of Origin** United Kingdom**Origin of the Primary Ingredient****PRODUCT  
CHARACTERISTICS  
CONFIGURATION****Standards Testing****Case Configuration****Inner Pack Configuration****Total Quantity of Inner Components in** 24 Units**Outer Case****PRODUCT  
WEIGHTS****Inner Component****Variable Weight Consumer Item** No**Inner Component Weight** 50 g**Outer Case****Outer Case Gross Weight** 1.36 kg**Outer Case Net Weight** 1.2 kg

PRODUCT DIMENSIONS

Inner Component	
Inner Component Depth	98 mm
Inner Component Width	60 mm
Inner Component Height	175 mm
Outer Case	
Outer Case Depth	255 mm
Outer Case Width	175 mm
Outer Case Height	117 mm

PALLET INFORMATION

Quantity of Cases Per Pallet Layer	25 Cases	Pallet Height	1.88 MTR
Quantity of Layers Per Pallet	16 Layers	Pallet Gross Weight	542.3 kg
Quantity of Cases Per Pallet	400 Cases		

OTHER INFORMATION CONTACT INFORMATION

**Address**

Walkers Snacks Limited (PepsiCo)  
450 South Oak Way  
Green Park  
RG2 6UW  
Reading  
United Kingdom

karthick.s@pepsico.com  
07824608485

**Commercial**

Olivia.Greenaway@pepsico.com  
olivia.greenaway@pepsico.com

The information on the [Erudus System](#) has been supplied by the manufacturers of the products and, whilst the owners of the Erudus System take steps to ensure the information is regularly updated, they give no warranty and no guarantee that the information is accurate. Product information and ingredients may change, please always read product labels carefully in addition to using the information provided by Erudus.

We do not accept liability for any inaccuracies or incorrect information contained on this site.  
Please visit <http://www.erudus.com/terms-and-conditions> for full terms and conditions.