

15542

# KIT KAT CHUNKY Peanut Butter 24x42g

Kit Kat Chunky Peanut Butter 42g 24x

## PRODUCT DESCRIPTION

Crisp wafer finger with a creamed peanut topping (19%) covered with milk chocolate (60%)

Brand	<a href="#">Nestle UK</a>
Manufacturer Product Code	12264513
Product Type	Food
Product Category	Confectionery
Storage Type	Ambient
Erudus ID	040805eb8198485796e5373ceae0b7c8
Specification Type	Legacy

Inner Component GTIN	3800020415009
Outer Case GTIN	3800020485491



## INGREDIENTS

### Ingredient Declaration

Sugar, Cocoa butter, Skimmed MILK powder, Ground roasted PEANUTS (10%), WHEAT flour, Cocoa mass, Palm fat, MILK fat, Lactose and proteins from whey (from MILK), PEANUT flour (2%), Emulsifier (Sunflower lecithin), Salt, Flavourings, Raising agent (Sodiumbicarbonate)

## ALLERGENS

### Product Contains:

Celery/Celery	No	Mustard	No
Cereals Containing Gluten	Yes	Nuts (Tree)	May Contain
Barley	No	Almond nuts	May Contain
Oats	No	Brazil nuts	May Contain
Rye	No	Cashew nuts	May Contain
Wheat (including Spelt and Khorasan)	Yes	Hazelnuts	May Contain
Gluten content <20ppm	No	Macadamia (Queensland) nuts	May Contain
Crustacea	No	Pecan nuts	May Contain
Eggs	No	Pistachio nuts	May Contain
Fish	No	Walnuts	May Contain
Lupin	No	Peanuts	Yes
Milk	Yes	Sesame Seeds	No
Molluscs	No	Soybeans	No
		Sulphur Dioxide and Sulphites	No

### Risk Source:

### Additional Allergen Information

Contains: Milk, Wheat, Peanuts. May Contain: Traces of Tree Nuts

SUPPLEMENTARY  
INGREDIENT  
INFORMATION

Palm Oil	Yes
Hydrogenated Vegetable Oil/Fat	No
GM Protein/DNA	No

ADDITIVES

*Product Contains:*

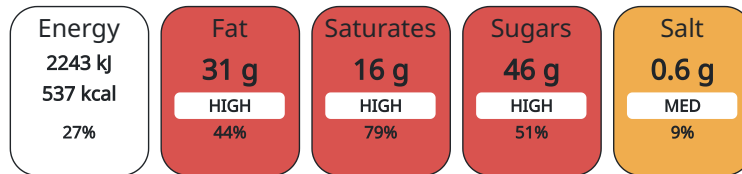
Artificial Antioxidants	No	Artificial Preservatives	No
Artificial Colours	No	Artificial Sweeteners	No

DIET SUITABILITY

Suitable for Coeliacs	No	Halal Diet	No
Kosher Diet	No	Vegetarian Diet	Suitable for
Vegan Diet	No		

NUTRITIONAL  
INFORMATION

Each 100g/ml portion contains:



of your reference intake.

Typical values per 100g/ml : Energy 537kcal / 2243kJ

Nutrient	per 100g/ml	RI per 100g/ml	per 42g/ml serving	RI per 42g/ml serving
Energy (kJ)	2243 kJ	27%	942.06	11%
Energy (kcal)	537 kcal	27%	225.54	11%
Fat	30.9 g	44%	12.98 g	19%
of which Saturates	15.7 g	79%	6.59 g	33%
Carbohydrate	54.1 g	21%	22.72 g	9%
of which Sugars	46.2 g	51%	19.4 g	22%
Fibre	2.1 g		0.88 g	
Protein	9.7 g	19%	4.07 g	8%
Salt	0.55 g	9%	0.23 g	4%

Serving Size 42 g

HFSS (HIGH IN  
FAT, SALT AND  
SUGAR)  
HANDLING &  
STORAGE  
INFORMATION

HFSS Status Yes

Directions For Use

ready to eat

Storage Instructions

cool dry place

Shelf Life from Time of Production 365 Days

ORIGIN

Product Country of Origin Bulgaria

PRODUCT  
CHARACTERISTICS

Standards Testing			
Do you undertake trend analysis of microbiological results?	No	Is shelf life testing undertaken?	No

CONFIGURATION

Case Configuration		Inner Pack Configuration	
Total Quantity of Inner Components in Outer Case	24 Units		

PRODUCT WEIGHTS

Inner Component	
Variable Weight Consumer Item	No
Weight/Volume	
42g	
Outer Case	
Outer Case Gross Weight	1.12 kg
Outer Case Net Weight	1.01 kg

PRODUCT DIMENSIONS

Inner Component	
Inner Component Depth	120 mm
Inner Component Width	18 mm
Inner Component Height	30 mm
Outer Case	
Outer Case Depth	204 mm
Outer Case Width	104 mm
Outer Case Height	78 mm

PALLET INFORMATION

Quantity of Cases Per Pallet Layer	37 Cases	Pallet Height	0.86 MTR
Quantity of Layers Per Pallet	9 Layers	Pallet Gross Weight	1.12 kg
Quantity of Cases Per Pallet	333 Cases		

PACKAGING

Inner Component Packaging						
Type	Materials	Weight	Recycled Material %	Recyclable	Returnable	Composite
Film	Plastic	1 g				
Outer Case Packaging						
Type	Materials	Weight	Recycled Material %	Recyclable	Returnable	Composite
Case	Paper/Cardboard	112 g				

OTHER INFORMATION CONTACT INFORMATION

<b>Address</b>	<b>Complaints</b>
Nestlé UK	consumer.services@uk.nestle.com
Nestlé UK Ltd	0800 00 00 30 (UK)
PO Box 207	
YO91 1WS	
York	
England	
helen.brewer@uk.nestle.com	
0800 00 00 30 (UK)	

The information on the [Erudus System](#) has been supplied by the manufacturers of the products and, whilst the owners of the Erudus System take steps to ensure the information is regularly updated, they give no warranty and no guarantee that the information is accurate. Product information and ingredients may change, please always read product labels carefully in addition to using the information provided by Erudus.

We do not accept liability for any inaccuracies or incorrect information contained on this site. Please visit <http://www.erudus.com/terms-and-conditions> for full terms and conditions.