

Changed Nov 13, 2025 12:07

Reviewed Nov 13, 2025 12:07

Erudus ID d92fe5b9b48242faa005afb6451ce73f

Version 3.0

Status Published

18031

# Ribena Pineapple and Passion Fruit Juice Drink No Added Sugar 12x500ml

Ribena Pineapple And Passion Fruit Juice Drink No Added Sugar 12x500ml 12x12x500ml

## PRODUCT DESCRIPTION

Pineapple, orange and passion fruit juice drink

Brand	<a href="#">Lucozade Ribena Suntory Limited</a>
Manufacturer Product Code	F96583
Product Type	Drink
Product Category	Juices and Cordials
Storage Type	Ambient
Erudus ID	d92fe5b9b48242faa005afb6451ce73f
Specification Type	Drinks

Inner Pack GTIN 5054267004375

Outer Case GTIN 05054267404373



## INGREDIENTS

### Ingredient Declaration

Water, Fruit Juices from Concentrate 5% (Pineapple (2%), Orange (2%), Passion Fruit (1%)), Acid (Citric Acid), Acidity Regulator (Sodium Lactate), Vitamin C, Natural Flavourings, Sweeteners (Aspartame, Acesulfame K), Stabilisers (Pectin, Locust Bean Gum), Colour (Beta Carotene). Contains a source of Phenylalanine.

## ALLERGENS

*Product Contains:*

Celery/Celeriac	No	Mustard	No
Cereals Containing Gluten	No	Nuts (Tree)	No
Barley	No	Almond nuts	No
Oats	No	Brazil nuts	No
Rye	No	Cashew nuts	No
Wheat (including Spelt and Khorasan)	No	Hazelnuts	No
Crustacea	No	Macadamia (Queensland) nuts	No
Eggs	No	Pecan nuts	No
Fish	No	Pistachio nuts	No
Lupin	No	Walnuts	No
Milk	No	Peanuts	No
Molluscs	No	Sesame Seeds	No
		Soybeans	No
		Sulphur Dioxide and Sulphites	No

SUPPLEMENTARY  
INGREDIENT  
INFORMATION

Palm Oil	No
Hydrogenated Vegetable Oil/Fat	No
GM Protein/DNA	No

ADDITIVES

*Product Contains:*

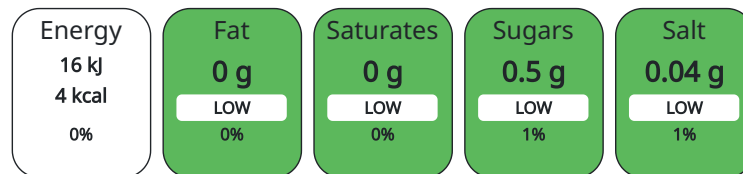
Artificial Antioxidants	No	Artificial Flavourings	No
Artificial Colours	No	Artificial Preservatives	No
Artificial Flavour Enhancers	No	Artificial Sweeteners	Yes

DIET SUITABILITY

Vegan Diet	Suitable for	Vegetarian Diet	Suitable for
Halal Diet	No	Kosher Diet	No

NUTRITIONAL  
INFORMATION AS  
SOLD

Each 100g/ml portion contains:



of your reference intake.

Typical values per 100g/ml : Energy 4kcal / 16kj

Nutrient	per 100ml	RI per 100ml	per 250ml serving	RI per 250ml serving
Energy (kJ)	16 kJ	0%	40	0%
Energy (kcal)	4 kcal	0%	10	1%
Fat	0 g		0 g	
of which Saturates	0 g		0 g	
Carbohydrate	0.5 g	0%	1.25 g	0%
of which Sugars	0.5 g	1%	1.25 g	1%
Protein	0.1 g	0%	0.25 g	1%
Salt	0.04 g	1%	0.1 g	2%

Serving Size 250 ml

VITAMINS AND  
MINERALS AS  
SOLD

Nutrient	per 100ml	RI per 100ml	per 250ml serving	RI per 250ml serving
Vitamin C	32 mg	40%	80 mg	100%

HFSS (HIGH IN  
FAT, SALT AND  
SUGAR)  
HANDLING &  
STORAGE  
INFORMATION

HFSS Status	No
-------------	----

Directions For Use

2 servings per bottle

Storage Instructions

Once opened store in the fridge and drink within 4 days Best served chilled

Shelf Life from Time of Production 150 Days

ORIGIN

Product Country of Origin	United Kingdom
---------------------------	----------------

Additional Origin Details

As above

Origin of the Primary Ingredient	United Kingdom
----------------------------------	----------------

PRODUCT  
CHARACTERISTICS

Standards Testing

CONFIGURATION	Case Configuration			Inner Pack Configuration				
	<b>Total Quantity of Inner Components in Outer Case</b>	12 Units		<b>Is Inner Pack Splittable?</b>	Yes			
	<b>Total Quantity of Inner Packs in Outer Case</b>	12 Units		<b>Quantity of Inner Components in Inner Pack</b>	12			
	<b>Is the Outer Case Splittable?</b>	Yes						
PRODUCT WEIGHTS	Inner Component							
	<b>Inner Component Volume</b>	500 ml						
	Outer Case							
	<b>Outer Case Gross Weight</b>	6.27 kg						
	<b>Outer Case Net Weight</b>	6.01 kg						
PRODUCT DIMENSIONS	Inner Component			Inner Pack				
	<b>Inner Component Depth</b>	66 mm		<b>Inner Pack Depth</b>	66 mm			
	<b>Inner Component Width</b>	66 mm		<b>Inner Pack Width</b>	66 mm			
	<b>Inner Component Height</b>	220 mm		<b>Inner Pack Height</b>	220 mm			
	Outer Case							
	<b>Outer Case Depth</b>	265 mm						
	<b>Outer Case Width</b>	199 mm						
	<b>Outer Case Height</b>	223 mm						
PALLET INFORMATION	<b>Quantity of Cases Per Pallet Layer</b>	22 Cases		<b>Pallet Height</b>	1.5 MTR			
	<b>Quantity of Layers Per Pallet</b>	6 Layers		<b>Pallet Gross Weight</b>	858.28 kg			
	<b>Quantity of Cases Per Pallet</b>	132 Cases						
PACKAGING	Inner Component Packaging							
	<b>Type</b>	<b>Materials</b>	<b>Weight</b>	<b>Recycled Material %</b>	<b>Recyclable</b>	<b>Returnable</b>	<b>Composite</b>	
	Bottle	Plastic	26.53 g					
	Outer Case Packaging							
	<b>Type</b>	<b>Materials</b>	<b>Weight</b>	<b>Recycled Material %</b>	<b>Recyclable</b>	<b>Returnable</b>	<b>Composite</b>	
	Case	Plastic	23 g					
	Case	Paper/Cardboard	0.7 g					
	OTHER INFORMATION CONTACT INFORMATION	<b>Address</b>						
		Lucozade Ribena Suntory Limited						
		2 Longwalk Road, Stockley Park UB11 1BA Uxbridge England						
sales.operations@suntory.com 07785 432833								

The information on the [Erudus System](#) has been supplied by the manufacturers of the products and, whilst the owners of the Erudus System take steps to ensure the information is regularly updated, they give no warranty and no guarantee that the information is accurate. Product information and ingredients may change, please always read product labels carefully in addition to using the information provided by Erudus.

We do not accept liability for any inaccuracies or incorrect information contained on this site.  
Please visit <http://www.erudus.com/terms-and-conditions> for full terms and conditions.