

18035

# Ribena Mango & Lime 12x500ml

Ribena Mango & Lime 12x500ml

## PRODUCT DESCRIPTION

Orange, Mango and Lime juice drink

Brand	<a href="#">Lucozade Ribena Suntory Limited</a>
Manufacturer Product Code	F40034
Product Type	Drink
Product Category	Juices and Cordials
Storage Type	Ambient
Erudus ID	dcd08b7d821e40c6b8c414971e763164
Specification Type	Legacy

Inner Component GTIN	5054267000346
Outer Case GTIN	05054267400344



## INGREDIENTS

### Ingredient Declaration

Water, Fruit Juices from Concentrate 5% (Orange (4%), Mango (0.5%), Lime (0.5%)), Acid (Citric Acid), Acidity Regulator (Sodium Lactate), Natural Flavourings, Vitamin C, Sweeteners (Aspartame, Acesulfame K), Stabilisers (Pectin, Locust Bean Gum), Colour (Beta Carotene). Contains a source of Phenylalanine.

## ALLERGENS

Product Contains:

<b>Celery/Celeriac</b>	No	<b>Mustard</b>	No
<b>Cereals Containing Gluten</b>	No	<b>Nuts (Tree)</b>	No
<b>Barley</b>	No	<b>Almond nuts</b>	No
<b>Oats</b>	No	<b>Brazil nuts</b>	No
<b>Rye</b>	No	<b>Cashew nuts</b>	No
<b>Wheat (including Spelt and Khorasan)</b>	No	<b>Hazelnuts</b>	No
<b>Gluten content &lt;20ppm</b>	Yes	<b>Macadamia (Queensland) nuts</b>	No
<b>Crustacea</b>	No	<b>Pecan nuts</b>	No
<b>Eggs</b>	No	<b>Pistachio nuts</b>	No
<b>Fish</b>	No	<b>Walnuts</b>	No
<b>Lupin</b>	No	<b>Peanuts</b>	No
<b>Milk</b>	No	<b>Sesame Seeds</b>	No
<b>Molluscs</b>	No	<b>Soybeans</b>	No
		<b>Sulphur Dioxide and Sulphites</b>	No

## SUPPLEMENTARY INGREDIENT INFORMATION

<b>Palm Oil</b>	No
<b>Hydrogenated Vegetable Oil/Fat</b>	No
<b>GM Protein/DNA</b>	No

ADDITIVES

Product Contains:

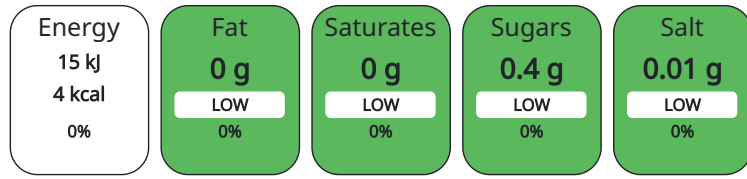
Artificial Antioxidants	Yes	Artificial Flavourings	No
Artificial Colours	No	Artificial Preservatives	No
Artificial Flavour Enhancers	No	Artificial Sweeteners	Yes

DIET SUITABILITY

Suitable for Coeliacs	Yes	Halal Diet	No
Kosher Diet	No	Vegetarian Diet	Suitable for
Vegan Diet	Suitable for		

NUTRITIONAL INFORMATION

Each 100g/ml portion contains:



of your reference intake.

Typical values per 100g/ml : Energy 4kcal / 15kJ

Nutrient	per 100g/ml	RI per 100g/ml	per 250g/ml serving	RI per 250g/ml serving
Energy (kJ)	15 kJ	0%	37.5	0%
Energy (kcal)	4 kcal	0%	10	1%
Fat	0 g		0 g	
of which Saturates	0 g		0 g	
Carbohydrate	0.4 g	0%	1 g	0%
of which Sugars	0.4 g	0%	1 g	1%
Fibre	0 g		0 g	
Protein	0.1 g	0%	0.25 g	1%
Salt	0.01 g	0%	0.03 g	1%
Serving Size	250 g			

VITAMINS AND MINERALS

Nutrient	per 100g/ml	RI per 100g/ml	per 250g/ml serving	RI per 250g/ml serving
Vitamin C	32 mg	40%	80 mg	100%

HFSS (HIGH IN FAT, SALT AND SUGAR) HANDLING & STORAGE INFORMATION

HFSS Status	No
Directions For Use	N/A
Storage Instructions	Once opened store in the fridge and drink within 4 days Best served chilled
Shelf Life from Time of Production	180 Days

ORIGIN

Product Country of Origin	United Kingdom
Additional Origin Details	As above

PRODUCT CHARACTERISTICS

Standards Testing	
-------------------	--

CONFIGURATION	Case Configuration	Inner Pack Configuration						
PRODUCT WEIGHTS	<b>Total Quantity of Inner Components in Outer Case</b>	12 Units						
	<b>Is the Outer Case Splittable?</b>	Yes						
	<b>Inner Component</b>							
PRODUCT DIMENSIONS	<b>Variable Weight Consumer Item</b>	No						
	<b>Weight/Volume</b>	500ml						
	<b>Outer Case</b>							
	<b>Outer Case Gross Weight</b>	6.31 kg						
	<b>Outer Case Net Weight</b>	6.01 kg						
	<b>Inner Component</b>							
	<b>Inner Component Depth</b>	66 mm						
PALLET INFORMATION	<b>Inner Component Width</b>	66 mm						
	<b>Inner Component Height</b>	220 mm						
	<b>Outer Case</b>							
	<b>Outer Case Depth</b>	265 mm						
	<b>Outer Case Width</b>	199 mm						
	<b>Outer Case Height</b>	223 mm						
	<b>Quantity of Cases Per Pallet Layer</b>	22 Cases	<b>Pallet Height</b>	1.5 MTR				
<b>Quantity of Layers Per Pallet</b>	6 Layers	<b>Pallet Gross Weight</b>	860.66 kg					
PACKAGING	<b>Quantity of Cases Per Pallet</b>	132 Cases						
	<b>Inner Component Packaging</b>							
	<b>Type</b>	<b>Materials</b>	<b>Weight</b>	<b>Recycled Material %</b>	<b>Recyclable</b>	<b>Returnable</b>	<b>Composite</b>	
	Bottle	Plastic	26.53 g					
	<b>Outer Case Packaging</b>							
	<b>Type</b>	<b>Materials</b>	<b>Weight</b>	<b>Recycled Material %</b>	<b>Recyclable</b>	<b>Returnable</b>	<b>Composite</b>	
	Case	Plastic	23 g					
	Case	Paper/Cardboard	0.7 g					
	OTHER INFORMATION CONTACT INFORMATION	<b>Address</b>						
		Lucozade Ribena Suntory Limited 2 Longwalk Road, Stockley Park UB11 1BA Uxbridge England  sales.operations@suntory.com 07785 432833						

The information on the [Erudus System](#) has been supplied by the manufacturers of the products and, whilst the owners of the Erudus System take steps to ensure the information is regularly updated, they give no warranty and no guarantee that the information is accurate. Product information and ingredients may change, please always read product labels carefully in addition to using the information provided by Erudus.

We do not accept liability for any inaccuracies or incorrect information contained on this site.  
Please visit <http://www.erudus.com/terms-and-conditions> for full terms and conditions.