

18049

Monster Energy Juiced Pipeline Punch 500ml x12

Monster Energy Juiced Pipeline Punch 12x0.53kg

PRODUCT DESCRIPTION

Monster Energy Juiced Pipeline Punch 500ml x12 Can

Brand	Coca-Cola
Manufacturer Product Code	217247
Product Type	Drink
Product Category	Drinks - General
Storage Type	Ambient
Erudus ID	d68e9b7815d54420b49bf2d230253741
Specification Type	Legacy

Inner Component GTIN	05060517882976
Outer Case GTIN	05060517882983



INGREDIENTS

Ingredient Declaration

Carbonated water, fruit juices from concentrate (6%) (orange, apple, guava, pineapple, passion fruit), sucrose, glucose syrup, taurine (0.4%), acid (citric acid), maltodextrin, flavourings, acidity regulator (sodium citrates), preservatives (potassium sorbate, sodium benzoate), caffeine (0.03%), vegetable oils (coconut, rapeseed), sweetener (sucralose), modified starch, vitamins (B3, B6, B2, B12), L-carnitine L-tartrate (0.004%), sodium chloride, inositol (0.002%), colour (E129)

ALLERGENS

Product Contains:

Celery/Celery	No	Mustard	No
Cereals Containing Gluten	No	Nuts (Tree)	No
Barley	No	Almond nuts	No
Oats	No	Brazil nuts	No
Rye	No	Cashew nuts	No
Wheat (including Spelt and Khorasan)	No	Hazelnuts	No
Crustacea	No	Macadamia (Queensland) nuts	No
Eggs	No	Pecan nuts	No
Fish	No	Pistachio nuts	No
Lupin	No	Walnuts	No
Milk	No	Peanuts	No
Molluscs	No	Sesame Seeds	No
		Soybeans	No
		Sulphur Dioxide and Sulphites	No

SUPPLEMENTARY INGREDIENT INFORMATION

Palm Oil	No
Hydrogenated Vegetable Oil/Fat	No
GM Protein/DNA	No

ADDITIVES

Product Contains:

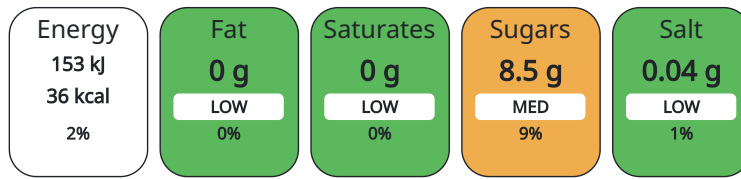
Artificial Antioxidants	No	Artificial Flavourings	Yes
Artificial Colours	Yes	Artificial Preservatives	Yes
Artificial Flavour Enhancers	No	Artificial Sweeteners	Yes

DIET SUITABILITY

Suitable for Coeliacs	Yes	Halal Diet	Suitable for
Kosher Diet	Suitable for	Vegetarian Diet	Suitable for
Vegan Diet	Suitable for		

NUTRITIONAL INFORMATION

Each 100g/ml portion contains:



of your reference intake.

Typical values per 100g/ml : Energy 36kcal / 153kJ

Nutrient	per 100g/ml	RI per 100g/ml
Energy (kJ)	153 kJ	2%
Energy (kcal)	36 kcal	2%
Fat	0 g	
of which Saturates	0 g	
Carbohydrate	9 g	3%
of which Sugars	8.5 g	9%
Protein	0 g	
Salt	0.04 g	1%

HFSS (HIGH IN FAT, SALT AND SUGAR) HANDLING & STORAGE INFORMATION

HFSS Status	No
Directions For Use	Best served chilled.
Storage Instructions	Store in a cool dry place.
Shelf Life from Time of Production	720 Days

ORIGIN

Product Country of Origin	Great Britain
---------------------------	---------------

PRODUCT CHARACTERISTICS CONFIGURATION

Standards Testing	
Case Configuration	Inner Pack Configuration
Total Quantity of Inner Components in Outer Case	12 Units
Is the Outer Case Splittable?	No

PRODUCT WEIGHTS

Inner Component	
Variable Weight Consumer Item	No
Inner Component Weight	0.53 kg
Outer Case	
Outer Case Gross Weight	7 kg
Outer Case Net Weight	6.22 kg

PRODUCT DIMENSIONS

Inner Component	
Inner Component Depth	67 mm
Inner Component Width	67 mm
Inner Component Height	168 mm
Outer Case	
Outer Case Depth	271 mm
Outer Case Width	205 mm
Outer Case Height	171 mm

PALLET INFORMATION

Quantity of Cases Per Pallet Layer	22 Cases	Pallet Height	1.53 MTR
Quantity of Layers Per Pallet	8 Layers	Pallet Gross Weight	1186.82 kg
Quantity of Cases Per Pallet	176 Cases		

PACKAGING

Inner Component Packaging						
Type	Materials	Weight	Recycled Material %	Recyclable	Returnable	Composite
Can	Aluminium	193.2 g				
Outer Case Packaging						
Type	Materials	Weight	Recycled Material %	Recyclable	Returnable	Composite
Case	Plastic	16.99 g				
Case	Paper/Cardboard	55.44 g				

OTHER INFORMATION CONTACT INFORMATION

<p>Address</p> <p>Coca-Cola Coca-Cola Europacific Partners Great Britain Limited Pemberton House, Bakers Road UB8 1EZ Uxbridge United Kingdom</p> <p>contact@ccep.com 08081000000</p>	<p>Technical</p> <p>Data Queries npidataexchange@ccep.com</p>
--	---

The information on the [Erudus System](#) has been supplied by the manufacturers of the products and, whilst the owners of the Erudus System take steps to ensure the information is regularly updated, they give no warranty and no guarantee that the information is accurate. Product information and ingredients may change, please always read product labels carefully in addition to using the information provided by Erudus.

We do not accept liability for any inaccuracies or incorrect information contained on this site. Please visit <http://www.erudus.com/terms-and-conditions> for full terms and conditions.