

Changed Aug 13, 2024 07:35

Reviewed Aug 13, 2024 07:35

Erudus ID 23cf896db628442f8b10424b69fd5cb9

Version 1.0

Status Published

18071

Coca-Cola Original Taste 330ml x24

Coca-cola Original Taste 24x0.35kg

PRODUCT DESCRIPTION

Coca-Cola Original Taste 330ml x24 Can

Brand	Coca-Cola
Manufacturer Product Code	643540
Product Type	Drink
Product Category	Drinks - General
Storage Type	Ambient
Erudus ID	23cf896db628442f8b10424b69fd5cb9
Specification Type	Drinks

Inner Component GTIN 05449000214911

Outer Case GTIN 05017726446321



INGREDIENTS

Ingredient Declaration

Carbonated Water, Sugar, Colour (Caramel E150d), Acid (Phosphoric Acid), Natural Flavourings, Caffeine Flavouring.

ALLERGENS

Product Contains:

Celery/Celeriac	No	Mustard	No
Cereals Containing Gluten	No	Nuts (Tree)	No
Barley	No	Almond nuts	No
Oats	No	Brazil nuts	No
Rye	No	Cashew nuts	No
Wheat (including Spelt and Khorasan)	No	Hazelnuts	No
Crustacea	No	Macadamia (Queensland) nuts	No
Eggs	No	Pecan nuts	No
Fish	No	Pistachio nuts	No
Lupin	No	Walnuts	No
Milk	No	Peanuts	No
Molluscs	No	Sesame Seeds	No
		Soybeans	No
		Sulphur Dioxide and Sulphites	No

SUPPLEMENTARY INGREDIENT INFORMATION

Palm Oil	No
Hydrogenated Vegetable Oil/Fat	No
GM Protein/DNA	No

ADDITIVES

Product Contains:

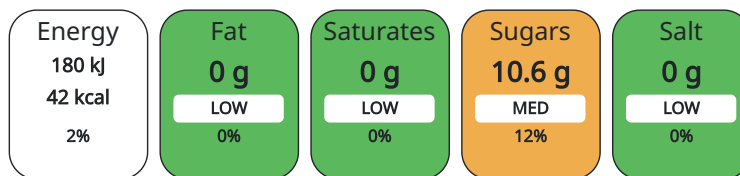
Artificial Antioxidants	No	Artificial Flavourings	Yes
Artificial Colours	Yes	Artificial Preservatives	No
Artificial Flavour Enhancers	No	Artificial Sweeteners	No

DIET SUITABILITY

Vegan Diet	Suitable for	Vegetarian Diet	Suitable for
Halal Diet	Suitable for	Kosher Diet	Suitable for

NUTRITIONAL INFORMATION AS SOLD

Each 100g/ml portion contains:



of your reference intake.

Typical values per 100g/ml : Energy 42kcal / 180kj

Nutrient	per 100ml	RI per 100ml
Energy (kJ)	180 kJ	2%
Energy (kcal)	42 kcal	2%
Fat	0 g	
of which Saturates	0 g	
Carbohydrate	10.6 g	4%
of which Sugars	10.6 g	12%
Protein	0 g	
Salt	0 g	

HFSS (HIGH IN FAT, SALT AND SUGAR)

HFSS Status	No
-------------	----

HANDLING & STORAGE INFORMATION

Directions For Use

Best served chilled.

Storage Instructions

Store cool and dry

Shelf Life from Time of Production	360 Days
------------------------------------	----------

ORIGIN

Product Country of Origin	Great Britain
---------------------------	---------------

Origin of the Primary Ingredient

PRODUCT CHARACTERISTICS CONFIGURATION

Standards Testing

Case Configuration Inner Pack Configuration

Total Quantity of Inner Components in Outer Case	24 Units
--	----------

Is the Outer Case Splittable?

Is the Outer Case Splittable?	No
-------------------------------	----

PRODUCT WEIGHTS

Inner Component

Inner Component Weight	0.35 kg
------------------------	---------

Outer Case

Outer Case Gross Weight	8.59 kg
-------------------------	---------

Outer Case Net Weight	8.22 kg
-----------------------	---------

PRODUCT DIMENSIONS

Inner Component	
Inner Component Depth	58.5 mm
Inner Component Width	58.5 mm
Inner Component Height	145.5 mm
Outer Case	
Outer Case Depth	358 mm
Outer Case Width	237 mm
Outer Case Height	148 mm

PALLET INFORMATION

Quantity of Cases Per Pallet Layer	10 Cases	Pallet Type	UK Standard Pallet
Quantity of Layers Per Pallet	13 Layers	Pallet Height	1.63 MTR
Quantity of Cases Per Pallet	130 Cases	Pallet Gross Weight	1147.13 kg

PACKAGING

Inner Component Packaging						
Type	Materials	Weight	Recycled Material %	Recyclable	Returnable	Composite
Can	Aluminium	285.36 g				
Outer Case Packaging						
Type	Materials	Weight	Recycled Material %	Recyclable	Returnable	Composite
Case	Plastic	16.96 g				
Case	Paper/Cardboard	51.2 g				

OTHER INFORMATION CONTACT INFORMATION

Address	Technical
Coca-Cola	Data Queries
Coca-Cola Europacific Partners Great Britain Limited	npidataexchange@ccep.com
Pemberton House, Bakers Road	
UB8 1EZ	
Uxbridge	
United Kingdom	
contact@ccep.com	
08081000000	

The information on the [Erudus System](#) has been supplied by the manufacturers of the products and, whilst the owners of the Erudus System take steps to ensure the information is regularly updated, they give no warranty and no guarantee that the information is accurate. Product information and ingredients may change, please always read product labels carefully in addition to using the information provided by Erudus.

We do not accept liability for any inaccuracies or incorrect information contained on this site. Please visit <http://www.erudus.com/terms-and-conditions> for full terms and conditions.