

18074

Monster Energy Ultra 500ml x12

Monster Energy Ultra 12x0.52kg

PRODUCT DESCRIPTION

Monster Energy Ultra 500ml x12 Can

Brand	Coca-Cola
Manufacturer Product Code	427612
Product Type	Drink
Product Category	Drinks - General
Storage Type	Ambient
Erudus ID	96e4cb3b10f346a6a06c1286f20ea597
Specification Type	Legacy

Inner Component GTIN	05060335635174
Outer Case GTIN	0506033563518



INGREDIENTS

Ingredient Declaration

Carbonated Water, Acid (Citric Acid), Taurine (0.4%), Acidity Regulator (Sodium Citrates), Flavourings, Panax Ginseng Root Extract (0.08%), Sweeteners (Sucralose, Acesulfame K), Caffeine (0.03%), Preservatives (Sorbic Acid, Benzoic Acid), L-Carnitine L-Tartrate (0.015%), Vitamins (B3, B5, B6, B12), Sodium Chloride, D-Glucuronolactone, Guarana Seed Extract (0.002%), Inositol.

ALLERGENS

Product Contains:

Celery/Celery	No	Mustard	No
Cereals Containing Gluten	No	Nuts (Tree)	No
Barley	No	Almond nuts	No
Oats	No	Brazil nuts	No
Rye	No	Cashew nuts	No
Wheat (including Spelt and Khorasan)	No	Hazelnuts	No
Crustacea	No	Macadamia (Queensland) nuts	No
Eggs	No	Pecan nuts	No
Fish	No	Pistachio nuts	No
Lupin	No	Walnuts	No
Milk	No	Peanuts	No
Molluscs	No	Sesame Seeds	No
		Soybeans	No
		Sulphur Dioxide and Sulphites	No

SUPPLEMENTARY INGREDIENT INFORMATION

Palm Oil	No
Hydrogenated Vegetable Oil/Fat	No
GM Protein/DNA	No

ADDITIVES

Product Contains:

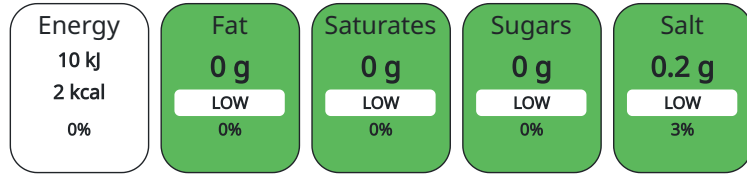
Artificial Antioxidants	No	Artificial Flavourings	No
Artificial Colours	Yes	Artificial Preservatives	Yes
Artificial Flavour Enhancers	No	Artificial Sweeteners	Yes

DIET SUITABILITY

Suitable for Coeliacs	Yes	Halal Diet	Suitable for
Kosher Diet	Suitable for	Vegetarian Diet	Suitable for
Vegan Diet	Suitable for		

NUTRITIONAL INFORMATION

Each 100g/ml portion contains:



of your reference intake.

Typical values per 100g/ml : Energy 2kcal / 10kj

Nutrient	per 100g/ml	RI per 100g/ml
Energy (kJ)	10 kJ	0%
Energy (kcal)	2 kcal	0%
Fat	0 g	
of which Saturates	0 g	
Carbohydrate	0.9 g	0%
of which Sugars	0 g	
Protein	0 g	
Salt	0.2 g	3%

HANDLING & STORAGE INFORMATION

Directions For Use

Best served chilled.

Storage Instructions

Store in a cool dry place.

Shelf Life from Time of Production 720 Days

ORIGIN

Product Country of Origin Great Britain

PRODUCT CHARACTERISTICS CONFIGURATION

Standards Testing

Case Configuration

Inner Pack Configuration

Total Quantity of Inner Components in 12 Units

Outer Case

Is the Outer Case Splittable? No

PRODUCT WEIGHTS

Inner Component

Variable Weight Consumer Item No

Inner Component Weight 0.52 kg

Outer Case

Outer Case Gross Weight 6.28 kg

Outer Case Net Weight 5.65 kg

PRODUCT DIMENSIONS

Inner Component	
Inner Component Depth	67 mm
Inner Component Width	67 mm
Inner Component Height	168 mm
Outer Case	
Outer Case Depth	271 mm
Outer Case Width	205 mm
Outer Case Height	171 mm

PALLET INFORMATION

Quantity of Cases Per Pallet Layer	22 Cases	Pallet Height	1.53 MTR
Quantity of Layers Per Pallet	8 Layers	Pallet Gross Weight	1135.95 kg
Quantity of Cases Per Pallet	176 Cases		

PACKAGING

Inner Component Packaging						
Type	Materials	Weight	Recycled Material %	Recyclable	Returnable	Composite
Can	Aluminium	175.2 g				
Outer Case Packaging						
Type	Materials	Weight	Recycled Material %	Recyclable	Returnable	Composite
Case	Plastic	71.3 g				
Case	Paper/Cardboard	0.38 g				

OTHER INFORMATION CONTACT INFORMATION

Address	Technical
Coca-Cola	Data Queries
Coca-Cola Europacific Partners Great Britain Limited	npidataexchange@ccep.com
Pemberton House, Bakers Road	
UB8 1EZ	
Uxbridge	
United Kingdom	
contact@ccep.com	
08081000000	

The information on the [Erudus System](#) has been supplied by the manufacturers of the products and, whilst the owners of the Erudus System take steps to ensure the information is regularly updated, they give no warranty and no guarantee that the information is accurate. Product information and ingredients may change, please always read product labels carefully in addition to using the information provided by Erudus.

We do not accept liability for any inaccuracies or incorrect information contained on this site. Please visit <http://www.erudus.com/terms-and-conditions> for full terms and conditions.