

Changed Dec 11, 2024 22:10

Reviewed Dec 11, 2024 22:10

Erudus ID fd09b4dd1d874aec9232a2aead9663ce

Version 2.0

Status Published

19016

# 500 PET X24 FANTA LEMON DP IEND

Sparkling Lemon Fruit Drink With Sugar And Sweeteners 24x0.54kg

## PRODUCT DESCRIPTION

500ML FANTA LEMON

Brand	FANTA
Manufacturer	<a href="#">Coca-Cola HBC Ireland Ltd</a>
Manufacturer Product Code	501324
Product Type	Drink
Product Category	Carbonated & Soft Drinks
Storage Type	Ambient
Erudus ID	fd09b4dd1d874aec9232a2aead9663ce
Specification Type	Drinks



Inner Component GTIN	5000112662665
Outer Case GTIN	05000112662702



## INGREDIENTS

### Ingredient Declaration

Carbonated Water, Lemon Juice from Concentrate (5%), Sugar, Acidity Regulator (Sodium Gluconate), Citric acid, Sweeteners (Acesulfame K, Aspartame), Malic acid, Preservative (Potassium Sorbate), Stabilisers (Acacia Gum, Glycerol Esters of Wood Rosins), Antioxidant (Ascorbic Acid), Natural Lemon Flavouring with Other Natural Flavourings.

## ALLERGENS

### Product Contains:

Celery/Celeriac	No	Mustard	No
Cereals Containing Gluten	No	Nuts (Tree)	No
Barley	No	Almond nuts	No
Oats	No	Brazil nuts	No
Rye	No	Cashew nuts	No
Wheat (including Spelt and Khorasan)	No	Hazelnuts	No
Crustacea	No	Macadamia (Queensland) nuts	No
Eggs	No	Pecan nuts	No
Fish	No	Pistachio nuts	No
Lupin	No	Walnuts	No
Milk	No	Peanuts	No
Molluscs	No	Sesame Seeds	No
		Soybeans	No
		Sulphur Dioxide and Sulphites	No

SUPPLEMENTARY  
INGREDIENT  
INFORMATION

Palm Oil	No	CBD Concentration per Unit	0 mg
Hydrogenated Vegetable Oil/Fat	No		
GM Protein/DNA	No		

ADDITIVES

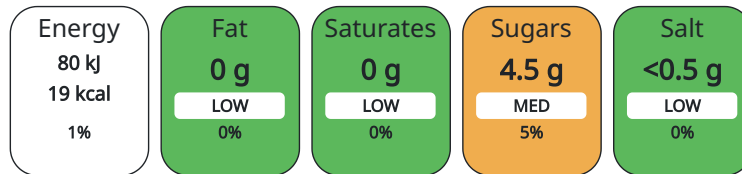
<i>Product Contains:</i>			
Artificial Antioxidants	Yes	Artificial Flavourings	No
Artificial Colours	Yes	Artificial Preservatives	Yes
Artificial Flavour Enhancers	No	Artificial Sweeteners	Yes

DIET SUITABILITY

Vegan Diet	Suitable for	Vegetarian Diet	Suitable for
Halal Diet	No	Kosher Diet	No

NUTRITIONAL  
INFORMATION AS  
SOLD

Each 100g/ml portion contains:



of your reference intake.

Typical values per 100g/ml : Energy 19kcal / 80kj

Nutrient	per 100ml	RI per 100ml	per 250ml serving	RI per 250ml serving
Energy (kJ)	80 kJ	1%	200	2%
Energy (kcal)	19 kcal	1%	47.5	2%
Fat	0 g		0 g	
of which Saturates	0 g		0 g	
Carbohydrate	4.5 g	2%	11.25 g	4%
of which Sugars	4.5 g	5%	11.25 g	13%
Protein	0 g		0 g	
Salt	0.02 g	0%	0.05 g	1%

Serving Size	250 ml
Serving Size Description	HALF OF 500ML PET BOTTLE
Number of Servings	2 Servings

HANDLING &  
STORAGE  
INFORMATION

Directions For Use	BEST SERVED CHILLED
Storage Instructions	STORE COOL & DRY
Shelf Life from Time of Production	183 Days

ORIGIN

Product Country of Origin	Northern Ireland, United Kingdom
Origin of the Primary Ingredient	

PRODUCT  
CHARACTERISTICS  
CONFIGURATION

Standards Testing	
Case Configuration	Inner Pack Configuration
Variable Inner Components in Outer Case	No
Total Quantity of Inner Components in Outer Case	24 Units
Is the Outer Case Splittable?	Yes
Count per Inner Component	1

PRODUCT WEIGHTS

Inner Component	
<b>Inner Component Weight</b>	0.54 kg
<b>Inner Component Volume</b>	500 ml
<b>Net Drained Weight</b>	0.52 kg
<b>e mark</b>	Yes
Outer Case	
<b>Outer Case Gross Weight</b>	12.96 kg
<b>Outer Case Net Weight</b>	12.35 kg

PRODUCT DIMENSIONS

Inner Component	
<b>Inner Component Depth</b>	66 mm
<b>Inner Component Width</b>	66 mm
<b>Inner Component Height</b>	229 mm
<b>Inner Component Diameter</b>	66 mm
Outer Case	
<b>Outer Case Depth</b>	264 mm
<b>Outer Case Width</b>	398 mm
<b>Outer Case Height</b>	229 mm

PALLET INFORMATION

<b>Quantity of Cases Per Pallet Layer</b>	12 Cases	<b>Pallet Type</b>	UK Standard Pallet
<b>Quantity of Layers Per Pallet</b>	6 Layers	<b>Pallet Height</b>	1.58 MTR
<b>Quantity of Cases Per Pallet</b>	72 Cases	<b>Pallet Gross Weight</b>	960.93 kg

PACKAGING

Inner Component Packaging						
Type	Materials	Weight	Recycled Material %	Recyclable	Returnable	Composite
Bottle	Plastic / PET (Polyethylene Terethphalate)	20.7 g	100 %	Yes	Yes	No
Cap	Plastic / PP (Polypropylene)	2.15 g		Yes	No	No
Label	Plastic / OPP (Oriented Polypropylene)	4 g		No	No	No
Outer Case Packaging						
Type	Materials	Weight	Recycled Material %	Recyclable	Returnable	Composite
Overwrap	Plastic / PE (Polyethylene)	28.8 g		Yes	No	No
Transport Packaging						
Type	Materials	Weight	Recycled Material %	Recyclable	Returnable	Composite
Pallet Wrap	Plastic / PE (Polyethylene)	323 g		No	No	No

MARKETING INFORMATION

**Marketing Description**  
FANTA LEMON

OTHER INFORMATION

<b>Intrastat/Taric Code</b>	22021000
<b>Commodity Code</b>	2202100000

CONTACT  
INFORMATION

**Address**

Coca-Cola HBC Ireland Ltd  
12 Lissue Road  
Knockmore Hill  
BT28 2SZ  
Lisburn  
Antrim  
Northern Ireland

jill.elliott@cchellenic.com  
028 92 642000

**Technical**

Jill Elliott  
jill.elliott@cchellenic.com  
07740881203  
Portfolio Development Specialist

**Commercial**

David Mulholland  
david.mulholland@cchellenic.com  
+353 863890369, +447740 881203  
Key Accounts Manager

**Complaints**

CUSTOMER SERVICES

NI: 0800 317318 ROI: 1800 317318

The information on the [Erudus System](#) has been supplied by the manufacturers of the products and, whilst the owners of the Erudus System take steps to ensure the information is regularly updated, they give no warranty and no guarantee that the information is accurate. Product information and ingredients may change, please always read product labels carefully in addition to using the information provided by Erudus.

We do not accept liability for any inaccuracies or incorrect information contained on this site.  
Please visit <http://www.erudus.com/terms-and-conditions> for full terms and conditions.