

Changed Jul 02, 2024 14:36

Reviewed Jul 02, 2024 14:36

Erudus ID ce4763e9490a4fd4b82f015557117c34

Version 2.0

Status Published

19032

Yazoo Banana 10x400ml

Banana Milk 10x

PRODUCT DESCRIPTION

A banana flavoured milk drink naturally rich in calcium and protein with no artificial sweeteners, colourings or flavourings.

Brand	Central Supplies Ltd
Manufacturer Product Code	MIYABAN400ML
Product Type	Drink
Product Category	Milkshakes & Flavoured Milk
Storage Type	Ambient
Erudus ID	ce4763e9490a4fd4b82f015557117c34
Specification Type	Drinks

Inner Component GTIN	5410438041295
Outer Case GTIN	05410438041332



INGREDIENTS

Ingredient Declaration

Semi Skimmed MILK, Skimmed MILK, Sugar (4.5%), banana juice from concentrate (1%), Stabiliser (Gellan Gum), Natural Flavouring, Colour (Carotenes).

ALLERGENS

Product Contains:

Celery/Celeriac	No	Mustard	No
Cereals Containing Gluten	No	Nuts (Tree)	No
Barley	No	Almond nuts	No
Oats	No	Brazil nuts	No
Rye	No	Cashew nuts	No
Wheat (including Spelt and Khorasan)	No	Hazelnuts	No
Crustacea	No	Macadamia (Queensland) nuts	No
Eggs	No	Pecan nuts	No
Fish	No	Pistachio nuts	No
Lupin	No	Walnuts	No
Milk	Yes	Peanuts	No
Molluscs	No	Sesame Seeds	No
		Soybeans	No
		Sulphur Dioxide and Sulphites	No

SUPPLEMENTARY
INGREDIENT
INFORMATION

Palm Oil	No	CBD Concentration per Unit	0 mg
Hydrogenated Vegetable Oil/Fat	No		
GM Protein/DNA	No		

ADDITIVES

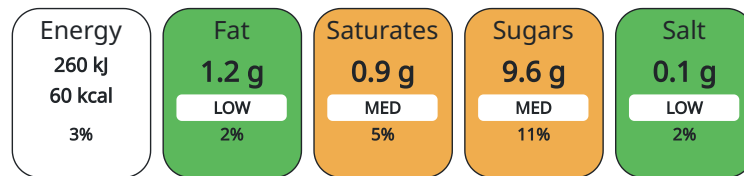
<i>Product Contains:</i>			
Artificial Antioxidants	No	Artificial Flavourings	No
Artificial Colours	No	Artificial Preservatives	No
Artificial Flavour Enhancers	No	Artificial Sweeteners	No

DIET SUITABILITY

Vegan Diet	No	Vegetarian Diet	Suitable for
Halal Diet	No	Kosher Diet	No

NUTRITIONAL
INFORMATION AS
SOLD

Each 100g/ml portion contains:



of your reference intake.

Typical values per 100g/ml : Energy 60kcal / 260kJ

Nutrient	per 100ml	RI per 100ml	per 200ml serving	RI per 200ml serving
Energy (kJ)	260 kJ	3%	520	6%
Energy (kcal)	60 kcal	3%	120	6%
Fat	1.2 g	2%	2.4 g	3%
of which Saturates	0.9 g	5%	1.8 g	9%
Carbohydrate	9.6 g	4%	19.2 g	7%
of which Sugars	9.6 g	11%	19.2 g	21%
Protein	3 g	6%	6 g	12%
Salt	0.1 g	2%	0.2 g	3%

Serving Size 200 ml

Nutrition Statements

High in protein with all the goodness of milk Source of calcium and vitamin B2 Calcium and protein help to maintain bones
Suitable for vegetarians Only 1.1% fat

VITAMINS AND
MINERALS AS
SOLD

Nutrient	per 100ml	RI per 100ml	per 200ml serving	RI per 200ml serving
Calcium	0.12 mg	0%	0.24 mg	0%

SUPPLEMENTARY
NUTRITIONAL
INFORMATION

Trans Fats per 100 g/ml	0.9 g
Non Milk Extrinsic Sugars per 100 g/ml	4.7 g

HANDLING &
STORAGE
INFORMATION

Directions For Use

Once opened store upright and consume with 3 days.

Storage Instructions

Once opened store upright and consume with 3 days.

Shelf Life from Time of Production 75 Days

ACCREDITATIONS/
CERTIFICATIONS/
ASSURANCE
SCHEMES

BRCGS Certified

ORIGIN	Product Country of Origin	Belgium					
	Origin of the Primary Ingredient						
PRODUCT CHARACTERISTICS CONFIGURATION	Standards Testing						
	Case Configuration	Inner Pack Configuration					
	Total Quantity of Inner Components in Outer Case	10 Units					
	Is the Outer Case Splittable?	No					
PRODUCT WEIGHTS	Inner Component						
	Outer Case						
	Outer Case Gross Weight	4.4 kg					
	Outer Case Net Weight	4.1 kg					
PRODUCT DIMENSIONS	Inner Component						
	Inner Component Depth	64 mm					
	Inner Component Width	64 mm					
	Inner Component Height	188 mm					
	Outer Case						
	Outer Case Depth	320 mm					
	Outer Case Width	128 mm					
	Outer Case Height	191 mm					
PALLET INFORMATION	Non Palletised	Yes					
	PACKAGING	Inner Component Packaging					
	Type	Materials	Weight	Recycled Material %	Recyclable	Returnable	Composite
	Poly Treated PET/PE	Plastic	22 g				
	Outer Case Packaging						
	Type	Materials	Weight	Recycled Material %	Recyclable	Returnable	Composite
	Case	Plastic	15 g				
	Case	Paper/Cardboard	39 g				
	Transport Packaging						
	Type	Materials	Weight	Recycled Material %	Recyclable	Returnable	Composite
	Other	Plastic	365 g				
	Other	Paper/Cardboard	3608 g				
OTHER INFORMATION					Identification/Health Marks	BE M322A EC	
	CONTACT INFORMATION	Address Central Supplies Ltd 2 Brook Park, Saltbrook Rd Cradley B63 2QU Halesowen West Midlands England chrisg@centralsupplies.co.uk 01384 414999					

The information on the [Erudus System](#) has been supplied by the manufacturers of the products and, whilst the owners of the Erudus System take steps to ensure the information is regularly updated, they give no warranty and no guarantee that the information is accurate. Product information and ingredients may change, please always read product labels carefully in addition to using the information provided by Erudus.

We do not accept liability for any inaccuracies or incorrect information contained on this site.
Please visit <http://www.erudus.com/terms-and-conditions> for full terms and conditions.