

Changed Mar 18, 2026 09:28

Reviewed Mar 18, 2026 09:28

Erudus ID b91af64622b54c418933af44f94da176

Version 2.1

Status Published

19034

# Yazoo Chocolate Milk Drink 10x400ml

Chocolate Flavoured Milk Drink 10x0.42kg

## PRODUCT DESCRIPTION

dark brown, chocolate flavoured long life milk drink in a bottle

Brand	<a href="#">Friesland Campina UK Ltd</a>
Manufacturer Product Code	704531
Product Type	Drink
Product Category	Milkshakes & Flavoured Milk
Storage Type	Ambient
Erudus ID	b91af64622b54c418933af44f94da176
Specification Type	Drinks



Inner Component GTIN	5410438036482
Outer Case GTIN	05410438036499



## INGREDIENTS

### Ingredient Declaration

Semi skimmed MILK, skimmed MILK, sugar, fat-reduced cocoa powder (1%), stabilisers: (cellulose, cellulose gum, carrageenan), natural flavouring.

## ALLERGENS

### Product Contains:

Celery/Celeriac	No	Mustard	No
Cereals Containing Gluten	No	Nuts (Tree)	No
Barley	No	Almond nuts	No
Oats	No	Brazil nuts	No
Rye	No	Cashew nuts	No
Wheat (including Spelt and Khorasan)	No	Hazelnuts	No
Crustacea	No	Macadamia (Queensland) nuts	No
Eggs	No	Pecan nuts	No
Fish	No	Pistachio nuts	No
Lupin	No	Walnuts	No
Milk	Yes	Peanuts	No
Molluscs	No	Sesame Seeds	No
		Soybeans	No
		Sulphur Dioxide and Sulphites	No

SUPPLEMENTARY  
INGREDIENT  
INFORMATION

Palm Oil	No
Hydrogenated Vegetable Oil/Fat	No
GM Protein/DNA	No

ADDITIVES

*Product Contains:*

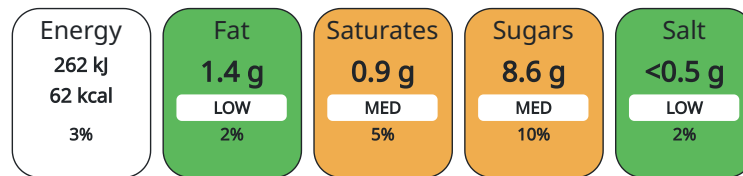
Artificial Antioxidants	No	Artificial Flavourings	No
Artificial Colours	No	Artificial Preservatives	No
Artificial Flavour Enhancers	No	Artificial Sweeteners	No

DIET SUITABILITY

Vegan Diet	No	Vegetarian Diet	Suitable for
Halal Diet	No	Kosher Diet	No

NUTRITIONAL  
INFORMATION AS  
SOLD

Each 100g/ml portion contains:



of your reference intake.

Typical values per 100g/ml : Energy 62kcal / 262kJ

Nutrient	per 100ml	RI per 100ml	per 200ml serving	RI per 200ml serving
Energy (kJ)	262 kJ	3%	524	6%
Energy (kcal)	62 kcal	3%	124	6%
Fat	1.4 g	2%	2.8 g	4%
of which Saturates	0.9 g	5%	1.8 g	9%
Carbohydrate	8.8 g	3%	17.6 g	7%
of which Sugars	8.6 g	10%	17.2 g	19%
Protein	3.2 g	6%	6.4 g	13%
Salt	0.1 g	2%	0.2 g	3%

Serving Size 200 ml

VITAMINS AND  
MINERALS AS  
SOLD

Nutrient	per 100ml	RI per 100ml	per 200ml serving	RI per 200ml serving
Calcium	105 mg	13%	210 mg	26%

HFSS (HIGH IN  
FAT, SALT AND  
SUGAR)  
HANDLING &  
STORAGE  
INFORMATION

HFSS Status	No
-------------	----

Directions For Use

Shake before use. Best served chilled.

Storage Instructions

Products are best stored in original unopened packaging under clean, cool and dry conditions, out of direct sunlight and separated from strongly odorous materials Ambient (Recommended storage temperature between 4 – 24 °C).

Storage Instructions After Opening

Please store in an upright position after opening Limited shelf life after opening, keep refrigerated at max. 7°C.

Shelf Life from Time of Production 210 Days

Shelf Life From Opening 3 Days

ACCREDITATIONS/  
CERTIFICATIONS/  
ASSURANCE  
SCHEMES

BRCGS Certified	IFS Food Standard
Other Accreditation	

ORIGIN	<b>Product Country of Origin</b>	Belgium					
	<b>Origin of the Primary Ingredient</b>	European Union					
PRODUCT CHARACTERISTICS CONFIGURATION	Standards Testing						
	<b>Case Configuration</b>	Inner Pack Configuration					
	<b>Total Quantity of Inner Components in Outer Case</b>	10 Units					
	<b>Is the Outer Case Splittable?</b>	Yes					
PRODUCT WEIGHTS	Inner Component						
	<b>Inner Component Weight</b>	0.42 kg					
	<b>Inner Component Volume</b>	400 ml					
	<b>Net Drained Weight</b>	0.42 kg					
	Outer Case						
	<b>Outer Case Gross Weight</b>	4.44 kg					
	<b>Outer Case Net Weight</b>	4.2 kg					
PRODUCT DIMENSIONS	Inner Component						
	<b>Inner Component Depth</b>	64 mm					
	<b>Inner Component Width</b>	64 mm					
	<b>Inner Component Height</b>	184.8 mm					
	Outer Case						
	<b>Outer Case Depth</b>	323 mm					
	<b>Outer Case Width</b>	131 mm					
	<b>Outer Case Height</b>	188 mm					
	PALLET INFORMATION	<b>Quantity of Cases Per Pallet Layer</b>	27 Cases		<b>Pallet Height</b>	1.51 MTR	
		<b>Quantity of Layers Per Pallet</b>	7 Layers		<b>Pallet Gross Weight</b>	867 kg	
<b>Quantity of Cases Per Pallet</b>		189 Cases					
PACKAGING	Inner Component Packaging						
	<b>Type</b>	<b>Materials</b>	<b>Weight</b>	<b>Recycled Material %</b>	<b>Recyclable</b>	<b>Returnable</b>	<b>Composite</b>
	Bottle	Plastic	19.19 g				
	Outer Case Packaging						
	<b>Type</b>	<b>Materials</b>	<b>Weight</b>	<b>Recycled Material %</b>	<b>Recyclable</b>	<b>Returnable</b>	<b>Composite</b>
	Case	Plastic	11.065 g				
	Case	Paper/Cardboard	36 g				
	Transport Packaging						
	<b>Type</b>	<b>Materials</b>	<b>Weight</b>	<b>Recycled Material %</b>	<b>Recyclable</b>	<b>Returnable</b>	<b>Composite</b>
	Pallet Wrap	Plastic	474.3 g				
	Layer Card	Paper/Cardboard	2377 g				
	Pallet	Wood	25000 g				
	OTHER INFORMATION	<b>Intrastat/Taric Code</b>	22029995		<b>Identification/Health Marks</b>	BE M332A EC	
		<b>Manufacturer Comments</b>	not applicable				

CONTACT  
INFORMATION

**Address**

Friesland Campina UK Ltd  
1st Floor, The Peak  
5 Wilton Road  
SW1V 1AN  
London  
England

[haleem.sadiq@frieslandcampina.com](mailto:haleem.sadiq@frieslandcampina.com)

**Technical**

Tammy Summers  
[Tammy.Summers@frieslandcampina.com](mailto:Tammy.Summers@frieslandcampina.com)  
QA/RA manager UK

The information on the [Erudus System](#) has been supplied by the manufacturers of the products and, whilst the owners of the Erudus System take steps to ensure the information is regularly updated, they give no warranty and no guarantee that the information is accurate. Product information and ingredients may change, please always read product labels carefully in addition to using the information provided by Erudus.

We do not accept liability for any inaccuracies or incorrect information contained on this site.  
Please visit <http://www.erudus.com/terms-and-conditions> for full terms and conditions.