

Changed Oct 29, 2024 12:50

Reviewed Oct 29, 2024 12:50

Erudus ID d86cd1b1372d4fcb871788ef29f2dc9e

Version 1.0

Status Published

19070

Boost Energy Original (12x500ml) PET

Boost Energy Original 12x537.5g

PRODUCT DESCRIPTION

Carbonated Mixed Fruit Flavour Drink with Taurine, Caffeine and B Vitamins, with Sugars and Sweeteners.

Brand	A.G. Barr P.L.C
Manufacturer Product Code	3086900
Product Type	Drink
Product Category	Sports, Energy & Wellness Drinks
Storage Type	Ambient
Erudus ID	d86cd1b1372d4fcb871788ef29f2dc9e
Specification Type	Drinks



Inner Component GTIN 5056079901248

Outer Case GTIN 15056079901245



INGREDIENTS

Ingredient Declaration

Carbonated Water, Sugar, Glucose-Fructose Syrup, Acid (Citric Acid), Taurine (0.4%), Flavourings, Caffeine (0.03%), Sweeteners (Aspartame, Acesulfame K), Colours (Sulphite Ammonia Caramel, Riboflavin), Acidity Regulator (Sodium Citrate), Inositol, Preservative (Sodium Benzoate), Vitamins (Niacin, Pantothenic Acid, Vitamin B6, Vitamin B12).

Ingredient Statements

Niacin, Pantothenic Acid, Vitamin B6 and Vitamin B12 contribute to the reduction of tiredness and fatigue. Each bottle contains at least 100% of these B Vitamin RI's*

ALLERGENS

Product Contains:

Celery/Celery	No	Mustard	No
Cereals Containing Gluten	No	Nuts (Tree)	No
Barley	No	Almond nuts	No
Oats	No	Brazil nuts	No
Rye	No	Cashew nuts	No
Wheat (including Spelt and Khorasan)	No	Hazelnuts	No
Crustacea	No	Macadamia (Queensland) nuts	No
Eggs	No	Pecan nuts	No
Fish	No	Pistachio nuts	No
Lupin	No	Walnuts	No
Milk	No	Peanuts	No
Molluscs	No	Sesame Seeds	No
		Soybeans	No
		Sulphur Dioxide and Sulphites	No

Additional Allergen Information

Contains a source of Phenylalanine.

SUPPLEMENTARY INGREDIENT INFORMATION

Palm Oil	No
Hydrogenated Vegetable Oil/Fat	No
GM Protein/DNA	No

ADDITIVES

Product Contains:

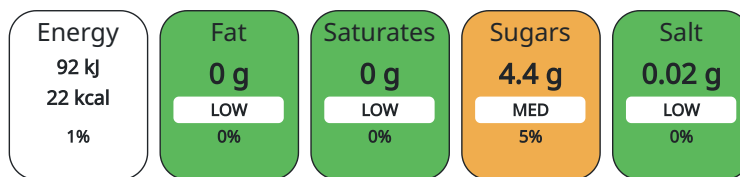
Artificial Antioxidants	No	Artificial Flavourings	Yes
Artificial Colours	Yes	Artificial Preservatives	Yes
Artificial Flavour Enhancers	No	Artificial Sweeteners	Yes

DIET SUITABILITY

Vegan Diet	Suitable for	Vegetarian Diet	Suitable for
Halal Diet	No	Kosher Diet	No

NUTRITIONAL INFORMATION AS SOLD

Each 100g/ml portion contains:



of your reference intake.

Typical values per 100g/ml : Energy 22kcal / 92kj

Nutrient	per 100ml	RI per 100ml	per 500ml serving	RI per 500ml serving
Energy (kJ)	92 kJ	1%	460	5%
Energy (kcal)	22 kcal	1%	110	6%
Fat	0 g		0 g	
of which Saturates	0 g		0 g	
Carbohydrate	4.4 g	2%	22 g	8%
of which Sugars	4.4 g	5%	22 g	24%
Protein	0 g		0 g	
Salt	0.02 g	0%	0.1 g	2%
Serving Size		500 ml		

VITAMINS AND MINERALS AS SOLD

Nutrient	per 100ml	RI per 100ml	per 500ml serving	RI per 500ml serving
Niacin (B3)	6.4 mg	40%	32 mg	200%
Vitamin B6	0.56 mg	40%	2.8 mg	200%
Vitamin B12	0.5 µg	20%	2.5 µg	100%
Pantothenic acid	2 mg	33%	10 mg	167%

HFSS (HIGH IN FAT, SALT AND SUGAR)
HANDLING & STORAGE INFORMATION

HFSS Status	No
-------------	----

Directions For Use

Open by hand, covering cap and pointing away from face. Avoid damaging cap Best Served Chilled

Storage Instructions

Store in a cool, dry place out of direct sunlight, Once opened, keep refrigerated and consume within 3 days.

Shelf Life from Time of Production	274 Days
------------------------------------	----------

BRCGS Certified	
-----------------	--

ACCREDITATIONS/ CERTIFICATIONS/ ASSURANCE SCHEMES ORIGIN

Product Country of Origin	United Kingdom
---------------------------	----------------

Origin of the Primary Ingredient	
----------------------------------	--

PRODUCT CHARACTERISTICS

Standards Testing			
Do you undertake trend analysis of microbiological results?	Yes	Is shelf life testing undertaken?	Yes

CONFIGURATION

Case Configuration		Inner Pack Configuration
Total Quantity of Inner Components in Outer Case	12 Units	
Is the Outer Case Splittable?	No	

PRODUCT WEIGHTS

Inner Component	
Inner Component Weight	537.5 g
Outer Case	
Outer Case Gross Weight	6.5 kg
Outer Case Net Weight	6 kg

PRODUCT DIMENSIONS

Inner Component	
Inner Component Depth	66 mm
Inner Component Width	66 mm
Inner Component Height	225 mm
Outer Case	
Outer Case Depth	265 mm
Outer Case Width	202 mm
Outer Case Height	226 mm

PALLET INFORMATION

Quantity of Cases Per Pallet Layer	22 Cases	Pallet Type	UK Standard Pallet
Quantity of Layers Per Pallet	6 Layers	Pallet Height	1.5 MTR
Quantity of Cases Per Pallet	132 Cases		

PACKAGING

Inner Component Packaging						
Type	Materials	Weight	Recycled Material %	Recyclable	Returnable	Composite
Bottle	Plastic	23.43 g				

Outer Case Packaging

Type	Materials	Weight	Recycled Material %	Recyclable	Returnable	Composite
Case	Plastic	19.9 g	30.00 %			
Case	Paper/Cardboard	0.7 g				

Transport Packaging

Type	Materials	Weight	Recycled Material %	Recyclable	Returnable	Composite
Other	Plastic	337.9 g	30.00 %		Yes	
Other	Wood	30000 g			Yes	

SAFETY & WARNINGS

Product Health Warning

PLEASE BE AWARE HIGH CAFFEINE CONTENT Not recommended for children or pregnant or breast-feeding women. (30mg/100ml). Consume in moderation as part of a varied and balanced diet and healthy lifestyle. Niacin, Pantothenic Acid, Vitamin B6 and Vitamin B12 contribute to the reduction of tiredness and fatigue. Each bottle contains at least 100% of these B Vitamin RI's* Contains a source of phenylalanine

OTHER INFORMATION CONTACT INFORMATION

Commodity Code 2202100000

Address

A.G. Barr P.L.C
Westfield House
4 Mollins Road
G68 9HD
Cumbernauld
Scotland

gracemejabi@agbarr.co.uk
01236 852400

The information on the [Erudus System](#) has been supplied by the manufacturers of the products and, whilst the owners of the Erudus System take steps to ensure the information is regularly updated, they give no warranty and no guarantee that the information is accurate. Product information and ingredients may change, please always read product labels carefully in addition to using the information provided by Erudus.

We do not accept liability for any inaccuracies or incorrect information contained on this site. Please visit <http://www.erudus.com/terms-and-conditions> for full terms and conditions.