

Changed Sep 03, 2024 10:50

Reviewed Sep 03, 2024 10:50

Erudus ID cff3fa90ae6c424fad6760cb759c449e

Version 1.0

Status Published

19092

PEPSI MAX 500ML PET X24

Carbonated Low Calorie Cola Flavoured Soft Drink With Sweeteners 24x

PRODUCT DESCRIPTION

Enjoy the great taste of Pepsi Max with no sugar and only 1 calorie per can. A bold and refreshing fizzy drink suitable for vegans and vegetarians.

Brand	Britvic Soft Drinks Limited
Manufacturer Product Code	205037
Manufacturer Version	v1
Number	
Effective Date	Sep 3, 2024
Product Type	Drink
Product Category	Carbonated & Soft Drinks
Storage Type	Ambient
Erudus ID	cff3fa90ae6c424fad6760cb759c449e
Specification Type	Drinks



Inner Component GTIN	87170788
Outer Case GTIN	04060800128454



INGREDIENTS

Ingredient Declaration

Carbonated Water, Colour (Caramel E150d), Sweeteners (Aspartame, Acesulfame K), Acids (Phosphoric Acid, Citric Acid), Flavourings (Including Caffeine), Preservative (Potassium Sorbate). Contains a Source of Phenylalanine.

ALLERGENS

Product Contains:

Celery/Celeriac	No	Mustard	No
Cereals Containing Gluten	No	Nuts (Tree)	No
Barley	No	Almond nuts	No
Oats	No	Brazil nuts	No
Rye	No	Cashew nuts	No
Wheat (including Spelt and Khorasan)	No	Hazelnuts	No
Crustacea	No	Macadamia (Queensland) nuts	No
Eggs	No	Pecan nuts	No
Fish	No	Pistachio nuts	No
Lupin	No	Walnuts	No
Milk	No	Peanuts	No
Molluscs	No	Sesame Seeds	No
		Soybeans	No
		Sulphur Dioxide and Sulphites	No

SUPPLEMENTARY
INGREDIENT
INFORMATION

Palm Oil	No	CBD Concentration per Unit	0 mg
Hydrogenated Vegetable Oil/Fat	No		
GM Protein/DNA	No		

ADDITIVES

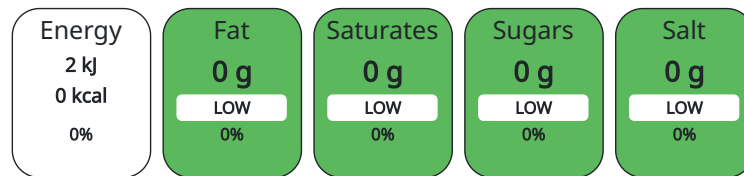
<i>Product Contains:</i>			
Artificial Antioxidants	No	Artificial Flavourings	No
Artificial Colours	Yes	Artificial Preservatives	No
Artificial Flavour Enhancers	No	Artificial Sweeteners	Yes

DIET SUITABILITY

Vegan Diet	Suitable for	Vegetarian Diet	Suitable for
Halal Diet	No	Kosher Diet	No

NUTRITIONAL
INFORMATION AS
SOLD

Each 100g/ml portion contains:



of your reference intake.

Typical values per 100g/ml : Energy 0kcal / 2kJ

Nutrient	per 100ml	RI per 100ml
Energy (kJ)	2 kJ	0%
Energy (kcal)	0.4 kcal	0%
Fat	0 g	
of which Saturates	0 g	
of which Mono-unsaturates	0 g	
of which Polyunsaturates	0 g	
Carbohydrate	0 g	
of which Sugars	0 g	
Protein	0 g	
Salt	0 g	
Sodium	0 mg	

NUTRITIONAL
INFORMATION AS
PREPARED

Nutrient	per 100g/ml prepared	RI per 100g/ml prepared
Energy (kcal)		

HFSS (HIGH IN
FAT, SALT AND
SUGAR)

HFSS Status	No
HFSS Score	0

HANDLING &
STORAGE
INFORMATION

Directions For Use

Ready to drink

Storage Instructions

Store in a cool and dry place

Shelf Life from Time of Production	180 Days
Shelf Life From Opening	3 Days

ORIGIN

Product Country of Origin	United Kingdom
Origin of the Primary Ingredient	

PRODUCT CHARACTERISTICS CONFIGURATION

Standards Testing

Case Configuration

Inner Pack Configuration

Variable Inner Components in Outer Case	No
Total Quantity of Inner Components in Outer Case	24 Units
Is the Outer Case Splittable?	Yes

PRODUCT WEIGHTS

Inner Component

Outer Case

Outer Case Gross Weight	12.6 kg
Outer Case Net Weight	12.03 kg

PRODUCT DIMENSIONS

Inner Component

Inner Component Depth	65.5 mm
Inner Component Width	65.5 mm
Inner Component Height	221 mm
Inner Component Diameter	66 mm

Outer Case

Outer Case Depth	395 mm
Outer Case Width	264 mm
Outer Case Height	222 mm

PALLET INFORMATION

Quantity of Cases Per Pallet Layer	10 Cases
Quantity of Layers Per Pallet	6 Layers
Quantity of Cases Per Pallet	60 Cases

Pallet Type	UK Standard Pallet
Pallet Height	1.49 MTR
Pallet Gross Weight	785 kg

MARKETING INFORMATION

Marketing Description

MAXIMUM TASTE, NO SUGAR a bold and refreshing fizzy drink; Zero Sugar, Zero Carbs LOW CALORIE carbonated cola that has just 1 calorie per can SUITABLE FOR VEGANS, VEGETARIANS a sparkling low calorie soft drink BEST SERVED chilled or over ice. Perfect for parties, meals, and celebrations big and small REMEMBER TO RECYCLE - Our cans and bottles can be recycled. Packaging may vary.

SAFETY & WARNINGS

Product Health Warning

Contains caffeine

OTHER INFORMATION CONTACT INFORMATION

Address

Britvic Soft Drinks Limited
 Breakspear Park
 Breakspear Way
 HP2 4TZ
 Hemel Hempstead
 Hertfordshire
 United Kingdom

Graham.Townes@britvic.com

Technical

Nikki Burton
 TechnicalInformationRequests@britvic.com
 +44 (0) 7736747481
 Technical Specifications Manager

The information on the [Erudus System](#) has been supplied by the manufacturers of the products and, whilst the owners of the Erudus System take steps to ensure the information is regularly updated, they give no warranty and no guarantee that the information is accurate. Product information and ingredients may change, please always read product labels carefully in addition to using the information provided by Erudus.

We do not accept liability for any inaccuracies or incorrect information contained on this site. Please visit <http://www.erudus.com/terms-and-conditions> for full terms and conditions.