

Changed Jan 23, 2024 08:50

Reviewed Jan 23, 2024 08:50

Erudus ID aca899cbdc2b4ff09c15f70266d46f0e

Version 1.1

Status Published

19135

IRN-BRU (12x500ml)

Irn-bru 12x500ml

PRODUCT DESCRIPTION

Sparkling Flavoured Soft Drink with Sugar and Sweeteners

Brand	A.G. Barr P.L.C
Manufacturer Product Code	3210134
Product Type	Drink
Product Category	Carbonated & Soft Drinks
Storage Type	Ambient
Erudus ID	aca899cbdc2b4ff09c15f70266d46f0e
Specification Type	Drinks



Inner Component GTIN	50271511
Outer Case GTIN	05000382000389



INGREDIENTS

Ingredient Declaration

Carbonated Water, Sugar, Acid (Citric Acid), Flavourings (Including Caffeine, Ammonium Ferric Citrate & Quinine), Sweeteners (Aspartame, Acesulfame K), Preservative (E211), Colours (Sunset Yellow FCF, Ponceau 4R).

ALLERGENS

Product Contains:

Celery/Celeriac	No	Mustard	No
Cereals Containing Gluten	No	Nuts (Tree)	No
Barley	No	Almond nuts	No
Oats	No	Brazil nuts	No
Rye	No	Cashew nuts	No
Wheat (including Spelt and Khorasan)	No	Hazelnuts	No
Crustacea	No	Macadamia (Queensland) nuts	No
Eggs	No	Pecan nuts	No
Fish	No	Pistachio nuts	No
Lupin	No	Walnuts	No
Milk	No	Peanuts	No
Molluscs	No	Sesame Seeds	No
		Soybeans	No
		Sulphur Dioxide and Sulphites	No

SUPPLEMENTARY
INGREDIENT
INFORMATION

Palm Oil	No
Hydrogenated Vegetable Oil/Fat	No
GM Protein/DNA	No

ADDITIVES

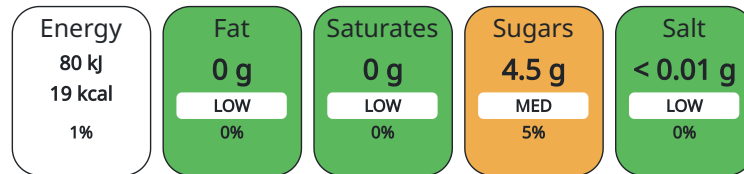
<i>Product Contains:</i>			
Artificial Antioxidants	No	Artificial Flavourings	Yes
Artificial Colours	Yes	Artificial Preservatives	Yes
Artificial Flavour Enhancers	No	Artificial Sweeteners	Yes

DIET SUITABILITY

Vegan Diet	Suitable for	Vegetarian Diet	Suitable for
Halal Diet	Suitable for	Kosher Diet	No

NUTRITIONAL
INFORMATION AS
SOLD

Each 100g/ml portion contains:



of your reference intake.

Typical values per 100g/ml : Energy 19kcal / 80kj

Nutrient	per 100ml	RI per 100ml	per 250ml serving	RI per 250ml serving
Energy (kJ)	80 kJ	1%	200	2%
Energy (kcal)	19 kcal	1%	47.5	2%
Fat	0 g		0 g	
of which Saturates	0 g		0 g	
Carbohydrate	4.5 g	2%	11.25 g	4%
of which Sugars	4.5 g	5%	11.25 g	13%
Protein	< 0.5 g	1%	1.25 g	3%
Salt	< 0.01 g	0%	0.03 g	1%

Serving Size 250 ml

HFSS (HIGH IN
FAT, SALT AND
SUGAR)

HFSS Status No

HANDLING &
STORAGE
INFORMATION

Directions For Use

n/a

Storage Instructions

Store in a cool, dry place away from direct sunlight.

Shelf Life from Time of Production 270 Days

Exempt From Shelf Life Labelling Yes

ACCREDITATIONS/
CERTIFICATIONS/
ASSURANCE
SCHEMES
ORIGIN

BRCGS Certified

ISO 14001 (Environmental Management)

Product Country of Origin United Kingdom

Additional Origin Details

Produced in the UK

Origin of the Primary Ingredient

PRODUCT
CHARACTERISTICS

Standards Testing

Do you undertake trend analysis of microbiological results? Yes

Is shelf life testing undertaken? Yes

CONFIGURATION	Case Configuration		Inner Pack Configuration				
	Total Quantity of Inner Components in Outer Case	12 Units					
	Is the Outer Case Splittable?	Yes					
PRODUCT WEIGHTS	Inner Component						
	Inner Component Volume	500 ml					
	Outer Case						
	Outer Case Gross Weight	6.45 kg					
	Outer Case Net Weight	6.36 kg					
PRODUCT DIMENSIONS	Inner Component						
	Inner Component Depth	66 mm					
	Inner Component Width	66 mm					
	Inner Component Height	230 mm					
	Outer Case						
	Outer Case Depth	263 mm					
	Outer Case Width	198 mm					
	Outer Case Height	231 mm					
PALLET INFORMATION	Quantity of Cases Per Pallet Layer	22 Cases	Pallet Height	1.5 MTR			
	Quantity of Layers Per Pallet	6 Layers	Pallet Gross Weight	881 kg			
	Quantity of Cases Per Pallet	132 Cases					
PACKAGING	Inner Component Packaging						
	Type	Materials	Weight	Recycled Material %	Recyclable	Returnable	Composite
	Bottle	Plastic	22.2 g				
	Outer Case Packaging						
	Type	Materials	Weight	Recycled Material %	Recyclable	Returnable	Composite
	Case	Plastic	16.41 g	50.00 %			
	Case	Paper/Cardboard	0.61 g				
	Transport Packaging						
	Type	Materials	Weight	Recycled Material %	Recyclable	Returnable	Composite
	Other	Plastic	200 g			Yes	
	Other	Paper/Cardboard	1706.34 g			Yes	
	SAFETY & WARNINGS	Product Health Warning					
		Contains a source of phenylalanine. Sunset Yellow & Ponceau 4R: May have an adverse effect on activity and attention in children.					
	OTHER INFORMATION	Commodity Code	22021000				
		Address	A.G. Barr P.L.C Westfield House 4 Mollins Road G68 9HD Cumbernauld Scotland				
	CONTACT INFORMATION	gracemejabi@agbarr.co.uk 01236 852400					

The information on the [Erudus System](#) has been supplied by the manufacturers of the products and, whilst the owners of the Erudus System take steps to ensure the information is regularly updated, they give no warranty and no guarantee that the information is accurate. Product information and ingredients may change, please always read product labels carefully in addition to using the information provided by Erudus.

We do not accept liability for any inaccuracies or incorrect information contained on this site.
Please visit <http://www.erudus.com/terms-and-conditions> for full terms and conditions.