

19184

Fanta Orange 500ml x12

Fanta Orange 12x0.53kg

PRODUCT DESCRIPTION

Fanta Orange 500ml x12 PET PM £1.20

Brand	Coca-Cola
Manufacturer Product Code	640797
Product Type	Drink
Product Category	Drinks - General
Storage Type	Ambient
Erudus ID	9ba9f46032d64f8db6e6b86645a40c8d
Specification Type	Legacy

Inner Component GTIN 05000112661996

Outer Case GTIN 05017726431419



INGREDIENTS

Ingredient Declaration

Carbonated Water, Sugar, Orange Juice From Concentrate (3.7%), Citrus Fruit From Concentrate (1.3%), Acids (Citric Acid, Malic Acid), Vegetable Extracts (Carrot, Pumpkin), Sweeteners (Acesulfame K, Sucralose), Preservative (Potassium Sorbate), Acidity Regulator (Sodium Citrates), Stabiliser (Guar Gum), Natural Orange Flavourings With Other Natural Flavourings, Antioxidant (Ascorbic Acid).

ALLERGENS

Product Contains:

Celery/Celeriac	No	Mustard	No
Cereals Containing Gluten	No	Nuts (Tree)	No
Barley	No	Almond nuts	No
Oats	No	Brazil nuts	No
Rye	No	Cashew nuts	No
Wheat (including Spelt and Khorasan)	No	Hazelnuts	No
Crustacea	No	Macadamia (Queensland) nuts	No
Eggs	No	Pecan nuts	No
Fish	No	Pistachio nuts	No
Lupin	No	Walnuts	No
Milk	No	Peanuts	No
Molluscs	No	Sesame Seeds	No
		Soybeans	No
		Sulphur Dioxide and Sulphites	No

SUPPLEMENTARY INGREDIENT INFORMATION

Palm Oil	No
Hydrogenated Vegetable Oil/Fat	No
GM Protein/DNA	No

ADDITIVES

Product Contains:

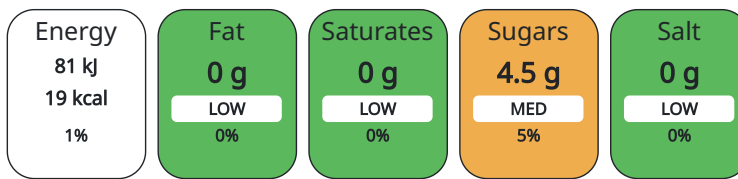
Artificial Antioxidants	Yes	Artificial Flavourings	Yes
Artificial Colours	No	Artificial Preservatives	Yes
Artificial Flavour Enhancers	No	Artificial Sweeteners	Yes

DIET SUITABILITY

Suitable for Coeliacs	Yes	Halal Diet	Suitable for
Kosher Diet	Suitable for	Vegetarian Diet	Suitable for
Vegan Diet	Suitable for		

NUTRITIONAL INFORMATION

Each 100g/ml portion contains:



of your reference intake.

Typical values per 100g/ml : Energy 19kcal / 81kj

Nutrient	per 100g/ml	RI per 100g/ml
Energy (kJ)	81 kJ	1%
Energy (kcal)	19 kcal	1%
Fat	0 g	
of which Saturates	0 g	
Carbohydrate	4.5 g	2%
of which Sugars	4.5 g	5%
Protein	0 g	
Salt	0 g	

HANDLING & STORAGE INFORMATION

Directions For Use

Best served chilled.

Storage Instructions

Store cool and dry

Shelf Life from Time of Production 150 Days

ORIGIN

Product Country of Origin Great Britain

PRODUCT CHARACTERISTICS CONFIGURATION

Standards Testing

Case Configuration

Inner Pack Configuration

Total Quantity of Inner Components in 12 Units

Outer Case

Is the Outer Case Splittable? No

PRODUCT WEIGHTS

Inner Component

Variable Weight Consumer Item No

Inner Component Weight 0.53 kg

Outer Case

Outer Case Gross Weight 6.38 kg

Outer Case Net Weight 6.1 kg

PRODUCT DIMENSIONS

Inner Component	
Inner Component Depth	66 mm
Inner Component Width	66 mm
Inner Component Height	233 mm
Outer Case	
Outer Case Depth	262 mm
Outer Case Width	197 mm
Outer Case Height	233 mm

PALLET INFORMATION

Quantity of Cases Per Pallet Layer	24 Cases	Pallet Height	1.56 MTR
Quantity of Layers Per Pallet	6 Layers	Pallet Gross Weight	948.47 kg
Quantity of Cases Per Pallet	144 Cases		

PACKAGING

Inner Component Packaging						
Type	Materials	Weight	Recycled Material %	Recyclable	Returnable	Composite
Bottle	Plastic	265.6 g				
Outer Case Packaging						
Type	Materials	Weight	Recycled Material %	Recyclable	Returnable	Composite
Case	Plastic	16.5 g				
Case	Paper/Cardboard	0.56 g				

OTHER INFORMATION CONTACT INFORMATION

Address	Technical
Coca-Cola	Data Queries
Coca-Cola Europacific Partners Great Britain Limited	npidataexchange@ccep.com
Pemberton House, Bakers Road	
UB8 1EZ	
Uxbridge	
United Kingdom	
contact@ccep.com	
08081000000	

The information on the [Erudus System](#) has been supplied by the manufacturers of the products and, whilst the owners of the Erudus System take steps to ensure the information is regularly updated, they give no warranty and no guarantee that the information is accurate. Product information and ingredients may change, please always read product labels carefully in addition to using the information provided by Erudus.

We do not accept liability for any inaccuracies or incorrect information contained on this site. Please visit <http://www.erudus.com/terms-and-conditions> for full terms and conditions.