

19188

# Coca-Cola Cherry 500ml x12

Coca-cola Cherry 12x0.54kg

## PRODUCT DESCRIPTION

Coca-Cola Cherry 500ml x12 PET PM £1.50

Brand	<a href="#">Coca-Cola</a>
Manufacturer Product Code	640770
Product Type	Drink
Product Category	Drinks - General
Storage Type	Ambient
Erudus ID	6cde53fff7354d8d9b3e32d4c1ddfc1e
Specification Type	Legacy

Inner Component GTIN	05000112662115
Outer Case GTIN	05017726431082



## INGREDIENTS

### Ingredient Declaration

Carbonated Water, Sugar, Colour (Caramel E150d), Acid (Phosphoric Acid), Natural Flavourings, Caffeine Flavouring.

## ALLERGENS

### Product Contains:

<b>Celery/Celeriac</b>	No	<b>Mustard</b>	No
<b>Cereals Containing Gluten</b>	No	<b>Nuts (Tree)</b>	No
<b>Barley</b>	No	<b>Almond nuts</b>	No
<b>Oats</b>	No	<b>Brazil nuts</b>	No
<b>Rye</b>	No	<b>Cashew nuts</b>	No
<b>Wheat (including Spelt and Khorasan)</b>	No	<b>Hazelnuts</b>	No
<b>Crustacea</b>	No	<b>Macadamia (Queensland) nuts</b>	No
<b>Eggs</b>	No	<b>Pecan nuts</b>	No
<b>Fish</b>	No	<b>Pistachio nuts</b>	No
<b>Lupin</b>	No	<b>Walnuts</b>	No
<b>Milk</b>	No	<b>Peanuts</b>	No
<b>Molluscs</b>	No	<b>Sesame Seeds</b>	No
		<b>Soybeans</b>	No
		<b>Sulphur Dioxide and Sulphites</b>	No

## SUPPLEMENTARY INGREDIENT INFORMATION

<b>Palm Oil</b>	No
<b>Hydrogenated Vegetable Oil/Fat</b>	No
<b>GM Protein/DNA</b>	No

ADDITIVES

Product Contains:

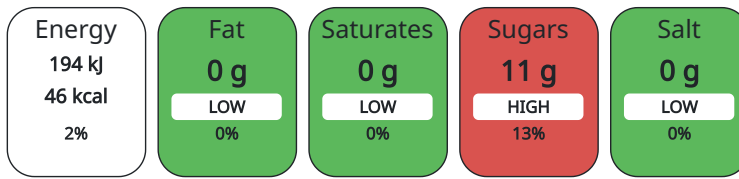
Artificial Antioxidants	No	Artificial Flavourings	Yes
Artificial Colours	Yes	Artificial Preservatives	No
Artificial Flavour Enhancers	No	Artificial Sweeteners	No

DIET SUITABILITY

Suitable for Coeliacs	Yes	Halal Diet	Suitable for
Kosher Diet	Suitable for	Vegetarian Diet	Suitable for
Vegan Diet	Suitable for		

NUTRITIONAL INFORMATION

Each 100g/ml portion contains:



of your reference intake.

Typical values per 100g/ml : Energy 46kcal / 194kJ

Nutrient	per 100g/ml	RI per 100g/ml
Energy (kJ)	194 kJ	2%
Energy (kcal)	46 kcal	2%
Fat	0 g	
of which Saturates	0 g	
Carbohydrate	11.4 g	4%
of which Sugars	11.4 g	13%
Protein	0 g	
Salt	0 g	

HFSS (HIGH IN FAT, SALT AND SUGAR) HANDLING & STORAGE INFORMATION

HFSS Status	No
Directions For Use	Best served chilled.
Storage Instructions	Store cool and dry.
Shelf Life from Time of Production	150 Days

ORIGIN

Product Country of Origin	Great Britain
---------------------------	---------------

PRODUCT CHARACTERISTICS CONFIGURATION

Standards Testing	
Case Configuration	Inner Pack Configuration
Total Quantity of Inner Components in Outer Case	12 Units
Is the Outer Case Splittable?	No

PRODUCT WEIGHTS

Inner Component	
Variable Weight Consumer Item	No
Inner Component Weight	0.54 kg
Outer Case	
Outer Case Gross Weight	6.53 kg
Outer Case Net Weight	6.25 kg

PRODUCT DIMENSIONS

Inner Component	
Inner Component Depth	66 mm
Inner Component Width	66 mm
Inner Component Height	233 mm
Outer Case	
Outer Case Depth	262 mm
Outer Case Width	197 mm
Outer Case Height	233 mm

PALLET INFORMATION

Quantity of Cases Per Pallet Layer	24 Cases	Pallet Height	1.56 MTR
Quantity of Layers Per Pallet	6 Layers	Pallet Gross Weight	970.52 kg
Quantity of Cases Per Pallet	144 Cases		

PACKAGING

Inner Component Packaging						
Type	Materials	Weight	Recycled Material %	Recyclable	Returnable	Composite
Bottle	Plastic	253.32 g				
Outer Case Packaging						
Type	Materials	Weight	Recycled Material %	Recyclable	Returnable	Composite
Case	Plastic	16.5 g				
Case	Paper/Cardboard	0.56 g				

CONTACT INFORMATION

<b>Address</b> Coca-Cola Coca-Cola Europacific Partners Great Britain Limited Pemberton House, Bakers Road UB8 1EZ Uxbridge United Kingdom  contact@ccep.com 08081000000	<b>Technical</b> Data Queries npidataexchange@ccep.com
---	--

The information on the [Erudus System](#) has been supplied by the manufacturers of the products and, whilst the owners of the Erudus System take steps to ensure the information is regularly updated, they give no warranty and no guarantee that the information is accurate. Product information and ingredients may change, please always read product labels carefully in addition to using the information provided by Erudus.

We do not accept liability for any inaccuracies or incorrect information contained on this site.  
Please visit <http://www.erudus.com/terms-and-conditions> for full terms and conditions.