

19205

# Coca-Cola Zero Sugar Cherry 500ml x12

Coca-cola Zero Sugar Cherry 12x0.52kg

## PRODUCT DESCRIPTION

Coca-Cola Zero Sugar Cherry 500ml x12 PET PM £1.10

Brand	<a href="#">Coca-Cola</a>
Manufacturer Product Code	640750
Product Type	Drink
Product Category	Drinks - General
Storage Type	Ambient
Erudus ID	9853a5aac5df4db1ba4430c1411b570e
Specification Type	Legacy

Inner Component GTIN 05000112662184

Outer Case GTIN 05017726431105



## INGREDIENTS

### Ingredient Declaration

Carbonated Water, Colour (Caramel E150d), Acid (Phosphoric Acid), Sweeteners (Aspartame, Acesulfame K), Natural Flavourings, Caffeine Flavouring, Acidity Regulator (Sodium Citrates).

## ALLERGENS

### Product Contains:

<b>Celery/Celeriac</b>	No	<b>Mustard</b>	No
<b>Cereals Containing Gluten</b>	No	<b>Nuts (Tree)</b>	No
<b>Barley</b>	No	<b>Almond nuts</b>	No
<b>Oats</b>	No	<b>Brazil nuts</b>	No
<b>Rye</b>	No	<b>Cashew nuts</b>	No
<b>Wheat (including Spelt and Khorasan)</b>	No	<b>Hazelnuts</b>	No
<b>Crustacea</b>	No	<b>Macadamia (Queensland) nuts</b>	No
<b>Eggs</b>	No	<b>Pecan nuts</b>	No
<b>Fish</b>	No	<b>Pistachio nuts</b>	No
<b>Lupin</b>	No	<b>Walnuts</b>	No
<b>Milk</b>	No	<b>Peanuts</b>	No
<b>Molluscs</b>	No	<b>Sesame Seeds</b>	No
		<b>Soybeans</b>	No
		<b>Sulphur Dioxide and Sulphites</b>	No

## SUPPLEMENTARY INGREDIENT INFORMATION

<b>Palm Oil</b>	No
<b>Hydrogenated Vegetable Oil/Fat</b>	No
<b>GM Protein/DNA</b>	No

ADDITIVES

Product Contains:

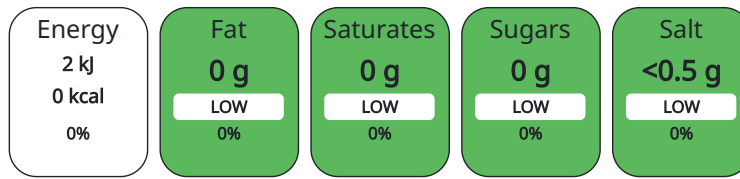
Artificial Antioxidants	No	Artificial Flavourings	No
Artificial Colours	Yes	Artificial Preservatives	Yes
Artificial Flavour Enhancers	No	Artificial Sweeteners	Yes

DIET SUITABILITY

Suitable for Coeliacs	Yes	Halal Diet	Suitable for
Kosher Diet	Suitable for	Vegetarian Diet	Suitable for
Vegan Diet	Suitable for		

NUTRITIONAL INFORMATION

Each 100g/ml portion contains:



of your reference intake.

Typical values per 100g/ml : Energy 0kcal / 2kJ

Nutrient	per 100g/ml	RI per 100g/ml
Energy (kJ)	1.5 kJ	0%
Energy (kcal)	0.4 kcal	0%
Fat	0 g	
of which Saturates	0 g	
Carbohydrate	0 g	
of which Sugars	0 g	
Protein	0 g	
Salt	0.01 g	0%

HANDLING & STORAGE INFORMATION

Directions For Use

Best served chilled.

Storage Instructions

Store cool and dry

Shelf Life from Time of Production 150 Days

ORIGIN

Product Country of Origin Great Britain

PRODUCT CHARACTERISTICS CONFIGURATION

Standards Testing

Case Configuration

Inner Pack Configuration

Total Quantity of Inner Components in 12 Units

Outer Case

Is the Outer Case Splittable? No

PRODUCT WEIGHTS

Inner Component

Variable Weight Consumer Item No

Inner Component Weight 0.52 kg

Outer Case

Outer Case Gross Weight 6.27 kg

Outer Case Net Weight 5.99 kg

**PRODUCT DIMENSIONS**

Inner Component	
<b>Inner Component Depth</b>	66 mm
<b>Inner Component Width</b>	66 mm
<b>Inner Component Height</b>	233 mm
Outer Case	
<b>Outer Case Depth</b>	262 mm
<b>Outer Case Width</b>	197 mm
<b>Outer Case Height</b>	233 mm

**PALLET INFORMATION**

<b>Quantity of Cases Per Pallet Layer</b>	24 Cases	<b>Pallet Height</b>	1.56 MTR
<b>Quantity of Layers Per Pallet</b>	6 Layers	<b>Pallet Gross Weight</b>	932.93 kg
<b>Quantity of Cases Per Pallet</b>	144 Cases		

**PACKAGING**

Inner Component Packaging						
Type	Materials	Weight	Recycled Material %	Recyclable	Returnable	Composite
Bottle	Plastic	253.32 g				
Outer Case Packaging						
Type	Materials	Weight	Recycled Material %	Recyclable	Returnable	Composite
Case	Plastic	16.5 g				
Case	Paper/Cardboard	0.56 g				

**CONTACT INFORMATION**

<b>Address</b>	<b>Technical</b>
Coca-Cola	Data Queries
Coca-Cola Europacific Partners Great Britain Limited	npidataexchange@ccep.com
Pemberton House, Bakers Road	
UB8 1EZ	
Uxbridge	
United Kingdom	
contact@ccep.com	
08081000000	

The information on the [Erudus System](#) has been supplied by the manufacturers of the products and, whilst the owners of the Erudus System take steps to ensure the information is regularly updated, they give no warranty and no guarantee that the information is accurate. Product information and ingredients may change, please always read product labels carefully in addition to using the information provided by Erudus.

We do not accept liability for any inaccuracies or incorrect information contained on this site.  
Please visit <http://www.erudus.com/terms-and-conditions> for full terms and conditions.