

19218

# Sprite Zero Sugar Lemon-Lime 500ml x12

Sprite Zero Sugar Lemon-lime 12x0.52kg

## PRODUCT DESCRIPTION

Sprite Zero Sugar Lemon-Lime 500ml x12 PET PM £1.10

Brand	<a href="#">Coca-Cola</a>
Manufacturer Product Code	640822
Product Type	Drink
Product Category	Drinks - General
Storage Type	Ambient
Erudus ID	b22c4339ab0046f191769ea0aea18d07
Specification Type	Legacy

Inner Component GTIN 05000112585377

Outer Case GTIN 05017726431440



## INGREDIENTS

### Ingredient Declaration

Carbonated Water, Acids (Citric Acid, Tartaric Acid), Acidity Regulator (Sodium Citrates), Sweeteners (Aspartame, Acesulfame-K, Sucralose), Natural Lemon And Lime Flavourings.

## ALLERGENS

### Product Contains:

<b>Celery/Celeriac</b>	No	<b>Mustard</b>	No
<b>Cereals Containing Gluten</b>	No	<b>Nuts (Tree)</b>	No
<b>Barley</b>	No	<b>Almond nuts</b>	No
<b>Oats</b>	No	<b>Brazil nuts</b>	No
<b>Rye</b>	No	<b>Cashew nuts</b>	No
<b>Wheat (including Spelt and Khorasan)</b>	No	<b>Hazelnuts</b>	No
<b>Crustacea</b>	No	<b>Macadamia (Queensland) nuts</b>	No
<b>Eggs</b>	No	<b>Pecan nuts</b>	No
<b>Fish</b>	No	<b>Pistachio nuts</b>	No
<b>Lupin</b>	No	<b>Walnuts</b>	No
<b>Milk</b>	No	<b>Peanuts</b>	No
<b>Molluscs</b>	No	<b>Sesame Seeds</b>	No
		<b>Soybeans</b>	No
		<b>Sulphur Dioxide and Sulphites</b>	No

## SUPPLEMENTARY INGREDIENT INFORMATION

<b>Palm Oil</b>	No
<b>Hydrogenated Vegetable Oil/Fat</b>	No
<b>GM Protein/DNA</b>	No

**ADDITIVES**

*Product Contains:*

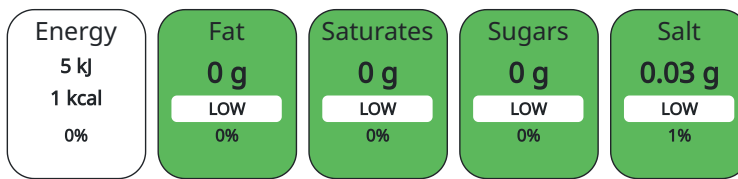
<b>Artificial Antioxidants</b>	No	<b>Artificial Flavourings</b>	No
<b>Artificial Colours</b>	No	<b>Artificial Preservatives</b>	No
<b>Artificial Flavour Enhancers</b>	No	<b>Artificial Sweeteners</b>	Yes

**DIET SUITABILITY**

<b>Suitable for Coeliacs</b>	Yes	<b>Halal Diet</b>	Suitable for
<b>Kosher Diet</b>	Suitable for	<b>Vegetarian Diet</b>	Suitable for
<b>Vegan Diet</b>	Suitable for		

**NUTRITIONAL INFORMATION**

Each 100g/ml portion contains:



of your reference intake.

Typical values per 100g/ml : Energy 1kcal / 5kJ

Nutrient	per 100g/ml	RI per 100g/ml
Energy (kJ)	5 kJ	0%
Energy (kcal)	1 kcal	0%
Fat	0 g	
of which Saturates	0 g	
Carbohydrate	0 g	
of which Sugars	0 g	
Protein	0 g	
Salt	0.03 g	1%

**HANDLING & STORAGE INFORMATION**

**Directions For Use**

Best served chilled.

**Storage Instructions**

Store in a cool dry place.

**Shelf Life from Time of Production** 150 Days

**ORIGIN**

**Product Country of Origin** Great Britain

**PRODUCT CHARACTERISTICS CONFIGURATION**

Standards Testing

Case Configuration

Inner Pack Configuration

**Total Quantity of Inner Components in** 12 Units

**Outer Case**

**Is the Outer Case Splittable?** No

**PRODUCT WEIGHTS**

Inner Component

**Variable Weight Consumer Item** No

**Inner Component Weight** 0.52 kg

Outer Case

**Outer Case Gross Weight** 6.27 kg

**Outer Case Net Weight** 5.99 kg

PRODUCT DIMENSIONS

Inner Component	
Inner Component Depth	66 mm
Inner Component Width	66 mm
Inner Component Height	233 mm
Outer Case	
Outer Case Depth	262 mm
Outer Case Width	197 mm
Outer Case Height	233 mm

PALLET INFORMATION

Quantity of Cases Per Pallet Layer	24 Cases	Pallet Height	1.56 MTR
Quantity of Layers Per Pallet	6 Layers	Pallet Gross Weight	933.2 kg
Quantity of Cases Per Pallet	144 Cases		

PACKAGING

Inner Component Packaging						
Type	Materials	Weight	Recycled Material %	Recyclable	Returnable	Composite
Bottle	Plastic	241.8 g				
Outer Case Packaging						
Type	Materials	Weight	Recycled Material %	Recyclable	Returnable	Composite
Case	Plastic	17.69 g				
Case	Paper/Cardboard	0.56 g				

OTHER INFORMATION CONTACT INFORMATION

<b>Address</b>	<b>Technical</b>
Coca-Cola	Data Queries
Coca-Cola Europacific Partners Great Britain Limited	npidataexchange@ccep.com
Pemberton House, Bakers Road	
UB8 1EZ	
Uxbridge	
United Kingdom	
contact@ccep.com	
08081000000	

The information on the [Erudus System](#) has been supplied by the manufacturers of the products and, whilst the owners of the Erudus System take steps to ensure the information is regularly updated, they give no warranty and no guarantee that the information is accurate. Product information and ingredients may change, please always read product labels carefully in addition to using the information provided by Erudus.

We do not accept liability for any inaccuracies or incorrect information contained on this site. Please visit <http://www.erudus.com/terms-and-conditions> for full terms and conditions.