

Changed Aug 07, 2025 12:39

Reviewed Aug 07, 2025 12:39

Erudus ID 2ccf59d65307450fa6dcc900f80d87fc

Version 2.0

Status Published

19244

# CADBURY SGL FUDGE 22G 60CA

Cadbury Sgl Fudge 22g 60x22g

## PRODUCT DESCRIPTION

Fudge covered with milk chocolate (24 %).

Brand	<a href="#">Mondelez UK Ltd</a>
Manufacturer Product Code	4255260
Product Type	Food
Product Category	Confectionery
Storage Type	Ambient
Erudus ID	2ccf59d65307450fa6dcc900f80d87fc
Specification Type	Generic



Inner Component GTIN 00000057030609

Outer Case GTIN 07622201137755



## INGREDIENTS

### Ingredient Declaration

Sugar, glucose syrup, palm oil, cocoa butter, cocoa mass, whey powder (from MILK), skimmed MILK powder, whey permeate powder (from MILK), MILK fat, emulsifiers (lecithins, E471, E442), flavourings, acidity regulator (sodium carbonates), salt, acid (citric acid), stabiliser (E509).

## ALLERGENS

### Product Contains:

Celery/Celeriac	No	Mustard	No
Cereals Containing Gluten	No	Nuts (Tree)	No
Barley	No	Almond nuts	No
Oats	No	Brazil nuts	No
Rye	No	Cashew nuts	No
Wheat (including Spelt and Khorasan)	No	Hazelnuts	No
Crustacea	No	Macadamia (Queensland) nuts	No
Eggs	No	Pecan nuts	No
Fish	No	Pistachio nuts	No
Lupin	No	Walnuts	No
Milk	Yes	Peanuts	No
Molluscs	No	Sesame Seeds	No
		Soybeans	No
		Sulphur Dioxide and Sulphites	No

SUPPLEMENTARY  
INGREDIENT  
INFORMATION

<b>Palm Oil</b>	Yes
<b>Hydrogenated Vegetable Oil/Fat</b>	No
<b>GM Protein/DNA</b>	No

ADDITIVES

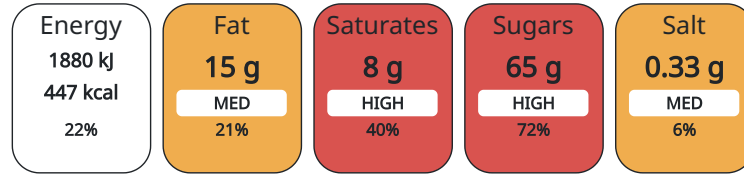
*Product Contains:*

DIET SUITABILITY

<b>Vegan Diet</b>	No	<b>Vegetarian Diet</b>	Suitable for
<b>Halal Diet</b>	No	<b>Kosher Diet</b>	No

NUTRITIONAL  
INFORMATION AS  
SOLD

Each 100g/ml portion contains:



of your reference intake.

Typical values per 100g/ml : Energy 447kcal / 1880kj

Nutrient	per 100g	RI per 100g	per 22g serving	RI per 22g serving
<b>Energy (kJ)</b>	1880 kJ	22%	413.6	5%
<b>Energy (kcal)</b>	447 kcal	22%	98.34	5%
<b>Fat</b>	15 g	21%	3.3 g	5%
<b>of which Saturates</b>	8 g	40%	1.76 g	9%
<b>Carbohydrate</b>	75 g	29%	16.5 g	6%
<b>of which Sugars</b>	65 g	72%	14.3 g	16%
<b>Fibre</b>	0.6 g		0.13 g	
<b>Protein</b>	1.7 g	3%	0.37 g	1%
<b>Salt</b>	0.33 g	6%	0.07 g	1%

<b>Serving Size</b>	22 g
<b>Number of Servings</b>	1 Servings

HANDLING &  
STORAGE  
INFORMATION

**Directions For Use**

Ready To Eat

**Storage Instructions**

STORE IN A DRY PLACE. PROTECT FROM HEAT.

<b>Shelf Life from Time of Production</b>	275 Days
---	----------

ORIGIN

<b>Product Country of Origin</b>	Poland
<b>Origin of the Primary Ingredient</b>	Not Applicable

PRODUCT  
CHARACTERISTICS  
CONFIGURATION

**Standards Testing**

Case Configuration

Inner Pack Configuration

<b>Total Quantity of Inner Components in</b>	60 Units
--	----------

**Outer Case**

<b>Is the Outer Case Splittable?</b>	No
--------------------------------------	----

PRODUCT WEIGHTS

Inner Component	
<b>Variable Weight Consumer Item</b>	No
<b>Inner Component Weight</b>	22 g
Outer Case	
<b>Outer Case Gross Weight</b>	1.42 kg
<b>Outer Case Net Weight</b>	1.32 kg

PRODUCT DIMENSIONS

Inner Component	
<b>Inner Component Depth</b>	22 mm
<b>Inner Component Width</b>	128 mm
<b>Inner Component Height</b>	13 mm
Outer Case	
<b>Outer Case Depth</b>	212 mm
<b>Outer Case Width</b>	139 mm
<b>Outer Case Height</b>	98 mm

PALLET INFORMATION

<b>Quantity of Cases Per Pallet Layer</b>	39 Cases	<b>Pallet Type</b>	Euro Pallet
<b>Quantity of Layers Per Pallet</b>	14 Layers	<b>Pallet Height</b>	1.54 MTR
<b>Quantity of Cases Per Pallet</b>	546 Cases	<b>Pallet Gross Weight</b>	775.59 kg

PACKAGING

Inner Component Packaging						
Type	Materials	Weight	Recycled Material %	Recyclable	Returnable	Composite
Pack	Plastic	19.8 g				
Outer Case Packaging						
Type	Materials	Weight	Recycled Material %	Recyclable	Returnable	Composite
Case	Paper/Cardboard	75 g				

OTHER INFORMATION CONTACT INFORMATION

<b>Address</b>	<b>Technical</b>
Mondelez UK Ltd	Tomas Sakalik
PO Box 12	tomas.sakalik@mdlz.com
Bournville Lane	Publication Expert
B30 2LU	
Bournville	
Birmingham	
England	
thomas.brooks@mdlz.com	
+44 1214 582 000	

The information on the [Erudus System](#) has been supplied by the manufacturers of the products and, whilst the owners of the Erudus System take steps to ensure the information is regularly updated, they give no warranty and no guarantee that the information is accurate. Product information and ingredients may change, please always read product labels carefully in addition to using the information provided by Erudus.

We do not accept liability for any inaccuracies or incorrect information contained on this site. Please visit <http://www.erudus.com/terms-and-conditions> for full terms and conditions.