

Changed Jun 26, 2025 16:32

Reviewed Jun 26, 2025 16:32

Erudus ID 00e524da8732400c87202c9871c6a911

Version 1.0

Status Published

19269

Milkybar White 40x25g

Mikybar White Medium Bar 40x25g

PRODUCT DESCRIPTION

White chocolate

Brand	Nestle UK
Manufacturer Product Code	12585743
Product Type	Food
Product Category	Confectionery
Storage Type	Ambient
Erudus ID	00e524da8732400c87202c9871c6a911
Specification Type	Generic

Inner Component GTIN	8000300430943
Outer Case GTIN	8000300430936



INGREDIENTS

Ingredient Declaration

sugar, cocoa butter, whole MILK powder, glucose syrup, emulsifier (lecithins), natural vanilla flavouring

Ingredient Statements

Rainforest Alliance certified cocoa. Find out more at ra.org

ALLERGENS

Product Contains:

Celery/Celeriac	No	Mustard	No
Cereals Containing Gluten	No	Nuts (Tree)	May Contain
Barley	No	Almond nuts	May Contain
Oats	No	Brazil nuts	May Contain
Rye	No	Cashew nuts	May Contain
Wheat (including Spelt and Khorasan)	No	Hazelnuts	May Contain
Crustacea	No	Macadamia (Queensland) nuts	May Contain
Eggs	No	Pecan nuts	May Contain
Fish	No	Pistachio nuts	May Contain
Lupin	No	Walnuts	May Contain
Milk	Yes	Peanuts	May Contain
Molluscs	No	Sesame Seeds	No
		Soybeans	No
		Sulphur Dioxide and Sulphites	No

Risk Source:

Tree Nuts (Risk Source)	Factory	Almond nuts (Risk Source)	Factory
Brazil nuts (Risk Source)	Factory	Cashew nuts (Risk Source)	Factory
Hazelnuts (Risk Source)	Factory	Macadamia nuts (Risk Source)	Factory
Pecan nuts (Risk Source)	Factory	Pistachio nuts (Risk Source)	Factory
Walnuts (Risk Source)	Factory	Peanuts (Risk Source)	Factory

Allergen Statement On Pack

May contain NUTS

Additional Allergen Information

May contain Nuts

SUPPLEMENTARY
INGREDIENT
INFORMATION

Palm Oil	Yes
Hydrogenated Vegetable Oil/Fat	No
GM Protein/DNA	No

ADDITIVES

Product Contains:

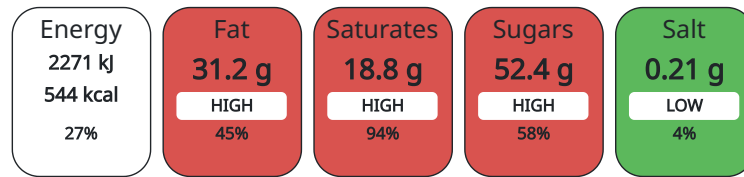
Artificial Antioxidants	No	Artificial Flavourings	No
Artificial Colours	No	Artificial Preservatives	No
Artificial Flavour Enhancers	No	Artificial Sweeteners	No

DIET SUITABILITY

Vegan Diet	No	Vegetarian Diet	Suitable for
Halal Diet	No	Kosher Diet	No

NUTRITIONAL
INFORMATION AS
SOLD

Each 100g/ml portion contains:



of your reference intake.

Typical values per 100g/ml : Energy 544kcal / 2271kj

Nutrient	per 100g	RI per 100g	per 25g serving	RI per 25g serving
Energy (kJ)	2271 kJ	27%	568 kJ	7%
Energy (kcal)	544 kcal	27%	136 kcal	7%
Fat	31.2 g	45%	7.8 g	11%
of which Saturates	18.8 g	94%	4.7 g	24%
Carbohydrate	59.4 g	23%	14.9 g	6%
of which Sugars	52.4 g	58%	13.1 g	15%
Fibre	0 g		0 g	
Protein	6 g	12%	1.5 g	3%
Salt	0.21 g	4%	0.05 g	1%

Serving Size	25 g
Serving Size Description	1 bar = 1 serving
Number of Servings	1 Servings

Source of Nutritional Information Manufacturers analysis

HFSS Status Yes

HFSS (HIGH IN
FAT, SALT AND
SUGAR)

HANDLING & STORAGE INFORMATION

Directions For Use

Ready to eat

Storage Instructions

Store cool and dry

Shelf Life from Time of Production 365 Days

ACCREDITATIONS/ CERTIFICATIONS/ ASSURANCE SCHEMES

FSSC 22000

ISO 22000 (Food Safety Management)

ISO 9001:2015 (Quality Management Systems)

ISO 14001 (Environmental Management)

ISO 45001 (Occupational Health and Safety)

Rainforest Alliance

ORIGIN

Product Country of Origin Italy

Origin of the Primary Ingredient Not Applicable

PRODUCT CHARACTERISTICS

Standards Testing

Do you undertake trend analysis of microbiological results? No

Is shelf life testing undertaken? No

CONFIGURATION

Case Configuration

Inner Pack Configuration

Total Quantity of Inner Components in Outer Case 40 Units

PRODUCT WEIGHTS

Inner Component

Variable Weight Consumer Item No

Inner Component Weight 25 g

Outer Case

Outer Case Gross Weight 1.13 kg

Outer Case Net Weight 1 kg

PRODUCT DIMENSIONS

Inner Component

Inner Component Depth 6 mm

Inner Component Width 146 mm

Inner Component Height 44 mm

Outer Case

Outer Case Depth 231 mm

Outer Case Width 179 mm

Outer Case Height 64 mm

PALLET INFORMATION

Quantity of Cases Per Pallet Layer 26 Cases

Pallet Height 0.87 MTR

Quantity of Layers Per Pallet 11 Layers

Pallet Gross Weight 354 kg

Quantity of Cases Per Pallet 286 Cases

PACKAGING

Inner Component Packaging

Type	Materials	Weight	Recycled Material %	Recyclable	Returnable	Composite
Film	Plastic	0.6 g				

Outer Case Packaging

Type	Materials	Weight	Recycled Material %	Recyclable	Returnable	Composite
Case	Plastic	2.6 g				
Case	Paper/Cardboard	99 g				

MARKETING INFORMATION

Marketing Description

1x deliciously creamy-tasting Milkybar® white chocolate 25g bar No artificial colours, flavours of preservatives Suitable for vegetarians Rainforest Alliance Certified cocoa

Address

Contact Us: Nestle UK Ltd
Nestle UK Ltd
PO Box 207
YO91 1WS
York
United Kingdom

0800 00 00 30

Complaints

consumer.services@uk.nestle.com
0800 00 00 30 (UK)

The information on the [Erudus System](#) has been supplied by the manufacturers of the products and, whilst the owners of the Erudus System take steps to ensure the information is regularly updated, they give no warranty and no guarantee that the information is accurate. Product information and ingredients may change, please always read product labels carefully in addition to using the information provided by Erudus.

We do not accept liability for any inaccuracies or incorrect information contained on this site.
Please visit <http://www.erudus.com/terms-and-conditions> for full terms and conditions.