

Changed Nov 15, 2024 11:11

Reviewed Nov 15, 2024 11:11

Erudus ID ee7317bda6314502ac065ab9489a12b6

Version 2.0

Status Published

19294

TWIX XTRA 24x75g GB IE

Twix Xtra Biscuit Twin Bars 75g 24x0.08kg

PRODUCT DESCRIPTION

Confectionery Bar

Brand	Mars
Manufacturer Product Code	462215
Product Type	Food
Product Category	Confectionery
Storage Type	Ambient
Erudus ID	ee7317bda6314502ac065ab9489a12b6
Specification Type	Generic

Inner Component GTIN	5000159558181
Outer Case GTIN	5000159558198



INGREDIENTS

Ingredient Declaration

Sugar, Glucose Syrup, WHEAT Flour, Palm Fat, Skimmed MILK Powder, Cocoa Butter, Cocoa Mass, Whey Permeate (MILK), MILK Fat, Fat-Reduced Cocoa Powder, Salt, Emulsifier (SOYA Lecithin), Raising Agent (E500), Flavouring, Milk Chocolate contains Vegetable Fats in addition to Cocoa Butter

Ingredient Statements

Milk Chocolate contains vegetable fats in addition to cocoa butter.

ALLERGENS

Product Contains:

Celery/Celeriac	No	Mustard	No
Cereals Containing Gluten	Yes	Nuts (Tree)	May Contain
Barley	No	Almond nuts	May Contain
Oats	No	Brazil nuts	May Contain
Rye	No	Cashew nuts	May Contain
Wheat (including Spelt and Khorasan)	Yes	Hazelnuts	May Contain
Crustacea	No	Macadamia (Queensland) nuts	May Contain
Eggs	No	Pecan nuts	May Contain
Fish	No	Pistachio nuts	May Contain
Lupin	No	Walnuts	May Contain
Milk	Yes	Peanuts	No
Molluscs	No	Sesame Seeds	No
		Soybeans	Yes
		Sulphur Dioxide and Sulphites	No

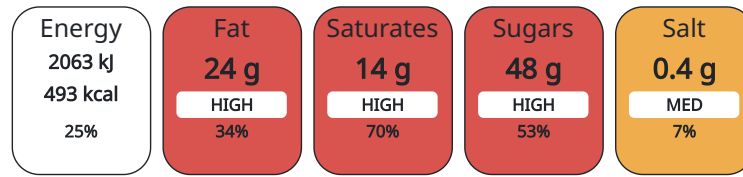
Risk Source:

SUPPLEMENTARY
INGREDIENT
INFORMATION
ADDITIVES

GM Protein/DNA No

Product Contains:

Each 100g/ml portion contains:



of your reference intake.

Typical values per 100g/ml : Energy 493kcal / 2063kJ

Nutrient	per 100g	RI per 100g
Energy (kJ)	2063 kJ	25%
Energy (kcal)	493 kcal	25%
Fat	24 g	34%
of which Saturates	14 g	70%
Carbohydrate	65 g	25%
of which Sugars	48 g	53%
Protein	4.6 g	9%
Salt	0.4 g	7%

HANDLING &
STORAGE
INFORMATION

Directions For Use

Ready to eat

Storage Instructions

Keep cool and dry

Shelf Life from Time of Production 217 Days

ORIGIN

Product Country of Origin Germany

Origin of the Primary Ingredient

PRODUCT
CHARACTERISTICS
CONFIGURATION

Standards Testing

Case Configuration

Inner Pack Configuration

Total Quantity of Inner Components in 24 Units

Outer Case

PRODUCT
WEIGHTS

Inner Component

Variable Weight Consumer Item No

Inner Component Weight 0.08 kg

Outer Case

Outer Case Gross Weight 1.96 kg

Outer Case Net Weight 1.8 kg

PRODUCT DIMENSIONS

Inner Component	
Inner Component Depth	0 mm
Inner Component Width	0 mm
Inner Component Height	0 mm
Outer Case	
Outer Case Depth	191 mm
Outer Case Width	170 mm
Outer Case Height	103 mm

PALLET INFORMATION

Quantity of Cases Per Pallet Layer	30 Cases	Pallet Height	1.6 MTR
Quantity of Layers Per Pallet	14 Layers	Pallet Gross Weight	853.19 kg
Quantity of Cases Per Pallet	420 Cases		

OTHER INFORMATION CONTACT INFORMATION

Address

Mars
3d Dundee Road
SL1 4LG
Slough
United Kingdom

adrian.holdstock@effem.com

Technical

Sharon Day
sharon.day@effem.com

The information on the [Erudus System](#) has been supplied by the manufacturers of the products and, whilst the owners of the Erudus System take steps to ensure the information is regularly updated, they give no warranty and no guarantee that the information is accurate. Product information and ingredients may change, please always read product labels carefully in addition to using the information provided by Erudus.

We do not accept liability for any inaccuracies or incorrect information contained on this site.
Please visit <http://www.erudus.com/terms-and-conditions> for full terms and conditions.