

Changed Feb 13, 2026 10:09

Reviewed Feb 13, 2026 10:09

Erudus ID 878b6f3101454c49ac969e0a9c044349

Version 2.0

Status Published

19335

SMARTIES Hexatube Utz Mbal 24x38g

Smarties Milk Chocolate Tube 38g 24x38g

PRODUCT DESCRIPTION

Milk chocolate (65%) in a crisp sugar shell.

Brand	Nestle UK
Manufacturer Product Code	12553258
Product Type	Food
Product Category	Confectionery
Storage Type	Ambient
Erudus ID	878b6f3101454c49ac969e0a9c044349
Specification Type	Generic

Inner Component GTIN	50249466
Outer Case GTIN	7613039203651



INGREDIENTS

Ingredient Declaration

Sugar, Skimmed MILK Powder, Cocoa Mass, Cocoa Butter, Glucose Syrup, WHEAT Flour, Whey Powder Product (MILK), Butterfat (MILK), Vegetable Fats (Palm, Shea), Starch, Emulsifier (Lecithins), Colours (Beetroot Red, Carotenes, Curcumin), Flavourings, Spirulina Concentrate, Glazing Agents (Carnauba Wax, Beeswax White), Vegetable Concentrates (Safflower, Radish), BARLEY Malt Extract, Nutrient Profile Score (Promotion and Placement), Nutrient Profile Score - 24

ALLERGENS

Product Contains:

Celery/Celeriac	No	Mustard	No
Cereals Containing Gluten	Yes	Nuts (Tree)	No
Barley	Yes	Almond nuts	No
Oats	No	Brazil nuts	No
Rye	No	Cashew nuts	No
Wheat (including Spelt and Khorasan)	Yes	Hazelnuts	No
Crustacea	No	Macadamia (Queensland) nuts	No
Eggs	No	Pecan nuts	No
Fish	No	Pistachio nuts	No
Lupin	No	Walnuts	No
Milk	Yes	Peanuts	No
Molluscs	No	Sesame Seeds	No
		Soybeans	No
		Sulphur Dioxide and Sulphites	No

Additional Allergen Information

Contains: MILK, LACTOSE, Cereals containing GLUTEN and products thereof - BARLEY and WHEAT

SUPPLEMENTARY
INGREDIENT
INFORMATION

Palm Oil	No
Hydrogenated Vegetable Oil/Fat	No
GM Protein/DNA	No

ADDITIVES

Product Contains:

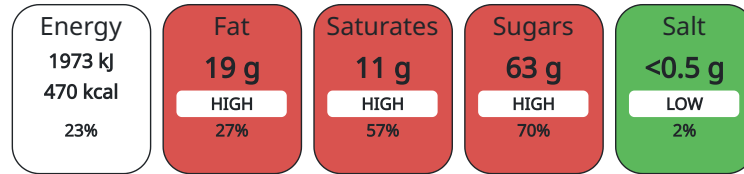
Artificial Colours	No	Artificial Flavourings	No
		Artificial Preservatives	No

DIET SUITABILITY

Vegan Diet	No	Vegetarian Diet	Suitable for
Halal Diet	No	Kosher Diet	No

NUTRITIONAL
INFORMATION AS
SOLD

Each 100g/ml portion contains:



of your reference intake.

Typical values per 100g/ml : Energy 470kcal / 1973kj

Nutrient	per 100g	RI per 100g
Energy (kJ)	1973 kJ	23%
Energy (kcal)	470 kcal	24%
Fat	18.8 g	27%
of which Saturates	11.4 g	57%
Carbohydrate	68 g	26%
of which Sugars	62.8 g	70%
Fibre	1.8 g	
Protein	6.3 g	13%
Salt	0.12 g	2%

Number of Servings: 2 Servings

NUTRITIONAL
INFORMATION AS
PREPARED

Nutrient	per 100g/ml prepared	RI per 100g/ml prepared
Energy (kJ)	1977 kJ	24%
Energy (kcal)	471 kcal	24%
Fat	18.7 g	27%
of which Saturates	11.3 g	57%
Carbohydrate	69 g	27%
of which Sugars	60.1 g	67%
Fibre	1.9 g	
Protein	5.4 g	11%
Salt	0.13 g	2%

HFSS (HIGH IN
FAT, SALT AND
SUGAR)

HFSS Status	Yes
-------------	-----

HANDLING & STORAGE INFORMATION

Directions For Use

Ready to eat

Storage Instructions

Store cool and dry

Shelf Life from Time of Production 365 Days

ACCREDITATIONS/ CERTIFICATIONS/ ASSURANCE SCHEMES ORIGIN

FSSC 22000

Product Country of Origin Germany

Origin of the Primary Ingredient Not Applicable

PRODUCT CHARACTERISTICS

Standards Testing

Do you undertake trend analysis of microbiological results? No

Is shelf life testing undertaken? No

CONFIGURATION

Case Configuration

Inner Pack Configuration

Total Quantity of Inner Components in Outer Case 24 Units

PRODUCT WEIGHTS

Inner Component

Variable Weight Consumer Item No

Inner Component Weight 38 g

Outer Case

Outer Case Gross Weight 1.07 kg

Outer Case Net Weight 0.91 kg

PRODUCT DIMENSIONS

Inner Component

Inner Component Depth 32 mm

Inner Component Width 112 mm

Inner Component Height 32 mm

Outer Case

Outer Case Depth 239 mm

Outer Case Width 120 mm

Outer Case Height 82 mm

PALLET INFORMATION

Quantity of Cases Per Pallet Layer 59 Cases

Pallet Height 1.12 MTR

Quantity of Layers Per Pallet 8 Layers

Pallet Gross Weight 536 kg

Quantity of Cases Per Pallet 472 Cases

PACKAGING

Inner Component Packaging

Type	Materials	Weight	Recycled Material %	Recyclable	Returnable	Composite
Carton	Paper/Cardboard	3 g				

Outer Case Packaging

Type	Materials	Weight	Recycled Material %	Recyclable	Returnable	Composite
Case	Paper/Cardboard	158 g				

SAFETY & WARNINGS

Product Health Warning

Important: Young children (less than 4 years) have limited chewing ability and could choke on small sweets.

OTHER
INFORMATION

Manufacturer Comments

Important: Young children (less than 4 years) have limited chewing ability and could choke on small sweets.

CONTACT
INFORMATION

Address

Contact Us: Nestle UK Ltd

Nestle UK Ltd

PO Box 207

YO91 1WS

York

United Kingdom

0800 00 00 30

Complaints

consumer.services@uk.nestle.com

0800 00 00 30 (UK)

The information on the [Erudus System](#) has been supplied by the manufacturers of the products and, whilst the owners of the Erudus System take steps to ensure the information is regularly updated, they give no warranty and no guarantee that the information is accurate. Product information and ingredients may change, please always read product labels carefully in addition to using the information provided by Erudus.

We do not accept liability for any inaccuracies or incorrect information contained on this site.

Please visit <http://www.erudus.com/terms-and-conditions> for full terms and conditions.