

19336

CAD 110G CDM ORANGE BUTTONS 10CA

Cad110g Cdm Orng Btn 10x110g

PRODUCT DESCRIPTION

Orange flavoured milk chocolates.

Brand	Mondelez UK Ltd
Manufacturer Product Code	4262049
Product Type	Food
Product Category	Confectionery
Storage Type	Ambient
Erudus ID	48a43156a3744fb6a3bcf030de341c44
Specification Type	Legacy

Inner Component GTIN	7622201438043
Outer Case GTIN	7622201438029



INGREDIENTS

Ingredient Declaration

MILK**, sugar, cocoa butter, cocoa mass, vegetable fats (palm, shea), emulsifiers (E442, E476), orange oil, flavourings **The equivalent of 426 ml of fresh liquid milk in every 227 g of milk chocolate, MILK SOLIDS 20% MINIMUM, ACTUAL 23%, COCOA SOLIDS 20% MINIMUM, CONTAINS VEGETABLE FATS IN ADDITION TO COCOA BUTTER.

ALLERGENS

Product Contains:

Celery/Celeriac	No	Mustard	No
Cereals Containing Gluten	No	Nuts (Tree)	No
Barley	No	Almond nuts	No
Oats	No	Brazil nuts	No
Rye	No	Cashew nuts	No
Wheat (including Spelt and Khorasan)	No	Hazelnuts	No
Gluten content <20ppm	Yes	Macadamia (Queensland) nuts	No
Crustacea	No	Pecan nuts	No
Eggs	No	Pistachio nuts	No
Fish	No	Walnuts	No
Lupin	No	Peanuts	No
Milk	Yes	Sesame Seeds	No
Molluscs	No	Soybeans	No
		Sulphur Dioxide and Sulphites	No

SUPPLEMENTARY INGREDIENT INFORMATION

Palm Oil	Yes
Hydrogenated Vegetable Oil/Fat	No
GM Protein/DNA	No

ADDITIVES

Product Contains:

Artificial Flavourings

Yes

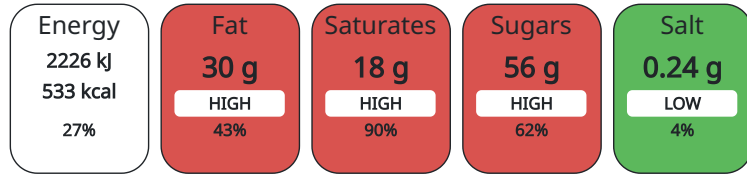
DIET SUITABILITY

Suitable for Coeliacs	Yes
Kosher Diet	No
Vegan Diet	No

Halal Diet	No
Vegetarian Diet	Suitable for

NUTRITIONAL INFORMATION

Each 100g/ml portion contains:



of your reference intake.

Typical values per 100g/ml : Energy 533kcal / 2226kJ

Nutrient	per 100g/ml	RI per 100g/ml
Energy (kJ)	2226 kJ	27%
Energy (kcal)	533 kcal	27%
Fat	30 g	43%
of which Saturates	18 g	90%
Carbohydrate	57 g	22%
of which Sugars	56 g	62%
Protein	7.4 g	15%
Salt	0.24 g	4%

HANDLING & STORAGE INFORMATION

Directions For Use

Ready to Eat

Storage Instructions

STORE IN A DRY PLACE. PROTECT FROM HEAT.

Shelf Life from Time of Production 120 Days

ORIGIN

Product Country of Origin Lithuania

PRODUCT CHARACTERISTICS CONFIGURATION

Standards Testing

Case Configuration

Inner Pack Configuration

Total Quantity of Inner Components in 10 Units

Outer Case

PRODUCT WEIGHTS

Inner Component

Variable Weight Consumer Item No

Inner Component Weight 110 g

Outer Case

Outer Case Gross Weight 1.31 kg

Outer Case Net Weight 1.1 kg

PRODUCT DIMENSIONS

Inner Component	
Inner Component Depth	112 mm
Inner Component Width	37 mm
Inner Component Height	167 mm
Outer Case	
Outer Case Depth	385 mm
Outer Case Width	118 mm
Outer Case Height	167 mm

PALLET INFORMATION

Quantity of Cases Per Pallet Layer	25 Cases	Pallet Height	2.33 MTR
Quantity of Layers Per Pallet	13 Layers	Pallet Gross Weight	427.69 kg
Quantity of Cases Per Pallet	325 Cases		

PACKAGING

Inner Component Packaging						
Type	Materials	Weight	Recycled Material %	Recyclable	Returnable	Composite
Bag	Plastic	5 g				
Outer Case Packaging						
Type	Materials	Weight	Recycled Material %	Recyclable	Returnable	Composite
Case	Paper/Cardboard	206 g				

OTHER INFORMATION CONTACT INFORMATION

Address

Mondelez UK Ltd
 PO Box 12
 Bournville Lane
 B30 2LU
 Bournville
 Birmingham
 England

thomas.brooks@mdlz.com
 +44 1214 582 000

Technical

Tomas Sakalik
 tomas.sakalik@mdlz.com
 Publication Expert

The information on the [Erudus System](#) has been supplied by the manufacturers of the products and, whilst the owners of the Erudus System take steps to ensure the information is regularly updated, they give no warranty and no guarantee that the information is accurate. Product information and ingredients may change, please always read product labels carefully in addition to using the information provided by Erudus.

We do not accept liability for any inaccuracies or incorrect information contained on this site. Please visit <http://www.erudus.com/terms-and-conditions> for full terms and conditions.