

19344

# Costa Coffee Latte 250ml x12

Costa Coffee Latte 12x0.27kg

## PRODUCT DESCRIPTION

Costa Coffee Latte 250ml x12 Can

Brand	<a href="#">Coca-Cola</a>
Manufacturer Product Code	284751
Product Type	Drink
Product Category	Drinks - General
Storage Type	Ambient
Erudus ID	16fe5ef17bad4ea39fc43b4f40b1b776
Specification Type	Legacy



Inner Component GTIN 5449000276025

Outer Case GTIN 5017726411176



## INGREDIENTS

### Ingredient Declaration

Coffee (Water, Coffee Extract\*\*) (49%), Whole MILK (48%), Sugar, Acidity Regulators (Potassium Carbonates, Potassium Citrates), Stabilisers (Cellulose, Cellulose Gum, Carrageenan), Natural Flavourings. \*\*Rainforest Alliance Certified

## ALLERGENS

Product Contains:

Celery/Celeriac	No	Mustard	No
Cereals Containing Gluten	No	Nuts (Tree)	No
Barley	No	Almond nuts	No
Oats	No	Brazil nuts	No
Rye	No	Cashew nuts	No
Wheat (including Spelt and Khorasan)	No	Hazelnuts	No
Crustacea	No	Macadamia (Queensland) nuts	No
Eggs	No	Pecan nuts	No
Fish	No	Pistachio nuts	No
Lupin	No	Walnuts	No
Milk	Yes	Peanuts	No
Molluscs	No	Sesame Seeds	No
		Soybeans	No
		Sulphur Dioxide and Sulphites	No

SUPPLEMENTARY  
INGREDIENT  
INFORMATION

Palm Oil	No
Hydrogenated Vegetable Oil/Fat	No
GM Protein/DNA	No

ADDITIVES

*Product Contains:*

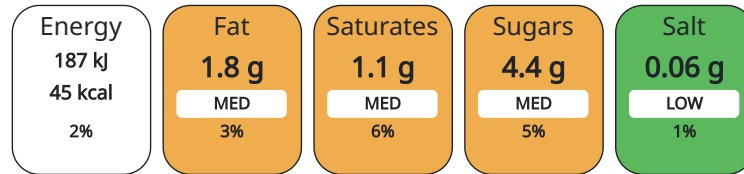
Artificial Antioxidants	No	Artificial Flavourings	No
Artificial Colours	No	Artificial Preservatives	No
Artificial Flavour Enhancers	No	Artificial Sweeteners	No

DIET SUITABILITY

Suitable for Coeliacs	Yes	Halal Diet	Suitable for
Kosher Diet	Suitable for	Vegetarian Diet	Suitable for
Vegan Diet	No		

NUTRITIONAL  
INFORMATION

Each 100g/ml portion contains:



of your reference intake.

Typical values per 100g/ml : Energy 45kcal / 187kJ

Nutrient	per 100g/ml	RI per 100g/ml
Energy (kJ)	187 kJ	2%
Energy (kcal)	45 kcal	2%
Fat	1.8 g	3%
of which Saturates	1.1 g	6%
Carbohydrate	4.9 g	2%
of which Sugars	4.4 g	5%
Protein	2 g	4%
Salt	0.06 g	1%

HFSS (HIGH IN  
FAT, SALT AND  
SUGAR)

HFSS Status	No
-------------	----

HANDLING &  
STORAGE  
INFORMATION

**Directions For Use**  
Best served chilled Best served cold Shake & Enjoy

**Storage Instructions**  
Store in a cool dry place.

Shelf Life from Time of Production	360 Days
------------------------------------	----------

ACCREDITATIONS/  
CERTIFICATIONS/  
ASSURANCE  
SCHEMES  
ORIGIN

Rainforest Alliance	
Product Country of Origin	Great Britain

PRODUCT  
CHARACTERISTICS  
CONFIGURATION

Standards Testing	
Case Configuration	Inner Pack Configuration
Total Quantity of Inner Components in Outer Case	12 Units
Is the Outer Case Splittable?	No

PRODUCT WEIGHTS

Inner Component	
<b>Variable Weight Consumer Item</b>	No
<b>Inner Component Weight</b>	0.27 kg
Outer Case	
<b>Outer Case Gross Weight</b>	3.36 kg
<b>Outer Case Net Weight</b>	3.11 kg

PRODUCT DIMENSIONS

Inner Component	
<b>Inner Component Depth</b>	54 mm
<b>Inner Component Width</b>	54 mm
<b>Inner Component Height</b>	134 mm
Outer Case	
<b>Outer Case Depth</b>	329 mm
<b>Outer Case Width</b>	113 mm
<b>Outer Case Height</b>	137 mm

PALLET INFORMATION

<b>Quantity of Cases Per Pallet Layer</b>	30 Cases	<b>Pallet Height</b>	1.26 MTR
<b>Quantity of Layers Per Pallet</b>	8 Layers	<b>Pallet Gross Weight</b>	837.18 kg
<b>Quantity of Cases Per Pallet</b>	240 Cases		

PACKAGING

Inner Component Packaging						
Type	Materials	Weight	Recycled Material %	Recyclable	Returnable	Composite
Can	Aluminium	128.4 g				
Outer Case Packaging						
Type	Materials	Weight	Recycled Material %	Recyclable	Returnable	Composite
Case	Plastic	25.33 g				
Case	Paper/Cardboard	88.6 g				

OTHER INFORMATION CONTACT INFORMATION

<b>Address</b>	<b>Technical</b>
Coca-Cola	Data Queries
Coca-Cola Europacific Partners Great Britain Limited	npidataexchange@ccep.com
Pemberton House, Bakers Road	
UB8 1EZ	
Uxbridge	
United Kingdom	
contact@ccep.com	
08081000000	

The information on the [Erudus System](#) has been supplied by the manufacturers of the products and, whilst the owners of the Erudus System take steps to ensure the information is regularly updated, they give no warranty and no guarantee that the information is accurate. Product information and ingredients may change, please always read product labels carefully in addition to using the information provided by Erudus.

We do not accept liability for any inaccuracies or incorrect information contained on this site. Please visit <http://www.erudus.com/terms-and-conditions> for full terms and conditions.