

Changed May 21, 2025 09:57

Reviewed May 21, 2025 09:57

Erudus ID 87a1e2bd1a594fd08407e6e576c84ea3

Version 1.1

Status Published

19359

M&M's Peanut pouch 112g 13x1

M&M's Peanut Chocolate Pouch Bag 112g 13x116.44g

PRODUCT DESCRIPTION

Bite Size Chocolate

Brand	Mars
Manufacturer Product Code	475899
Product Type	Food
Product Category	Confectionery
Storage Type	Ambient
Erudus ID	87a1e2bd1a594fd08407e6e576c84ea3
Specification Type	Generic

Inner Component GTIN 5000159571043

Outer Case GTIN 5000159571050



INGREDIENTS

Ingredient Declaration

Ingredients: sugar, **peanuts**, cocoa mass, full cream **milk** powder, cocoa butter, starch, palm fat, skimmed **milk** powder, glucose syrup, stabiliser (gum arabic), emulsifier (**soya** lecithin), shea fat, whey permeate (**milk**), **milk** fat, dextrin, glazing agent (carnauba wax), palm kernel oil, colours (carmine, E133, E170, E100, E160a, E160e), salt, flavouring.

Ingredient Statements

Milk chocolate contains milk solids 14% minimum.

ALLERGENS

Product Contains:

Celery/Celeryiac	No	Mustard	No
Cereals Containing Gluten	No	Nuts (Tree)	May Contain
Barley	No	Almond nuts	May Contain
Oats	No	Brazil nuts	No
Rye	No	Cashew nuts	No
Wheat (including Spelt and Khorasan)	No	Hazelnuts	May Contain
Crustacea	No	Macadamia (Queensland) nuts	No
Eggs	No	Pecan nuts	No
Fish	No	Pistachio nuts	No
Lupin	No	Walnuts	No
Milk	Yes	Peanuts	Yes
Molluscs	No	Sesame Seeds	No
		Soybeans	Yes
		Sulphur Dioxide and Sulphites	No

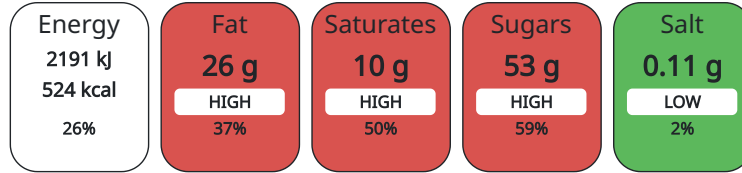
Risk Source:

Allergen Statement On Pack

May contain: almonds, hazelnuts

SUPPLEMENTARY
INGREDIENT
INFORMATION
ADDITIVES**GM Protein/DNA** No*Product Contains:*NUTRITIONAL
INFORMATION AS
SOLD

Each 100g/ml portion contains:



of your reference intake.

Typical values per 100g/ml : Energy 524kcal / 2191kJ

Nutrient	per 100g	RI per 100g
Energy (kJ)	2191 kJ	26%
Energy (kcal)	524 kcal	26%
Fat	26 g	37%
of which Saturates	10 g	50%
Carbohydrate	60 g	23%
of which Sugars	53 g	59%
Protein	9.7 g	19%
Salt	0.11 g	2%

HANDLING &
STORAGE
INFORMATION**Directions For Use**

Ready to eat

Storage Instructions

Keep cool and dry

Shelf Life from Time of Production 217 Days

ORIGIN

Product Country of Origin France**Origin of the Primary Ingredient** Not ApplicablePRODUCT
CHARACTERISTICS
CONFIGURATION**Standards Testing**

Case Configuration

Inner Pack Configuration

Total Quantity of Inner Components in 13 Units**Outer Case**PRODUCT
WEIGHTS

Inner Component

Variable Weight Consumer Item No**Inner Component Weight** 116.44 g

Outer Case

Outer Case Gross Weight 1.79 kg**Outer Case Net Weight** 1.46 kg

PRODUCT DIMENSIONS

Inner Component	
Inner Component Depth	45 mm
Inner Component Width	115 mm
Inner Component Height	165 mm
Outer Case	
Outer Case Depth	387 mm
Outer Case Width	146 mm
Outer Case Height	164 mm

PALLET INFORMATION

Quantity of Cases Per Pallet Layer	20 Cases	Pallet Height	1.64 MTR
Quantity of Layers Per Pallet	9 Layers	Pallet Gross Weight	352.38 kg
Quantity of Cases Per Pallet	180 Cases		

OTHER INFORMATION CONTACT INFORMATION

Address

Mars
3d Dundee Road
SL1 4LG
Slough
United Kingdom

adrian.holdstock@effem.com

Technical

Sharon Day
sharon.day@effem.com

The information on the [Erudus System](#) has been supplied by the manufacturers of the products and, whilst the owners of the Erudus System take steps to ensure the information is regularly updated, they give no warranty and no guarantee that the information is accurate. Product information and ingredients may change, please always read product labels carefully in addition to using the information provided by Erudus.

We do not accept liability for any inaccuracies or incorrect information contained on this site.
Please visit <http://www.erudus.com/terms-and-conditions> for full terms and conditions.