

Changed May 02, 2025 08:28

Reviewed May 02, 2025 08:28

Erudus ID b9302aaa1931493b87c32d5d271354c9

Version 6.0

Status Published

19369

# JUICEBURST™ 500ml ORANGE & PASSION FRUIT

Orange, Passion Fruit, Grape And Apple Juice Drink With Sweetener 12x500ml

## PRODUCT DESCRIPTION

Orange, Passion Fruit, Grape and Apple Juice Drink with Sweetener

|                           |  |
|---------------------------|--|
| Brand                     | <a href="#">Purity Soft Drinks Ltd</a> |
| Manufacturer Product Code | JBURSTORG&PAS500ML                     |
| Product Type              | Drink                                  |
| Product Category          | Juices and Cordials                    |
| Storage Type              | Ambient                                |
| Erudus ID                 | b9302aaa1931493b87c32d5d271354c9       |
| Specification Type        | Drinks                                 |

|                      |                |
|----------------------|----------------|
| Inner Component GTIN | 5038512005270  |
| Outer Case GTIN      | 05038512005379 |



## INGREDIENTS

### Ingredient Declaration

Water, Fruit Juices from Concentrate : White Grape (15%), Orange (15%), Apple (14%), Passion Fruit (1%). Antioxidant: Ascorbic Acid. Natural Flavouring, Sweetener: Steviol Glycosides from Stevia. Colour: Carotenes.

## ALLERGENS

### Product Contains:

|                                      |    |                               |    |
|--------------------------------------|----|-------------------------------|----|
| Celery/Celeriac                      | No | Mustard                       | No |
| Cereals Containing Gluten            | No | Nuts (Tree)                   | No |
| Barley                               | No | Almond nuts                   | No |
| Oats                                 | No | Brazil nuts                   | No |
| Rye                                  | No | Cashew nuts                   | No |
| Wheat (including Spelt and Khorasan) | No | Hazelnuts                     | No |
| Crustacea                            | No | Macadamia (Queensland) nuts   | No |
| Eggs                                 | No | Pecan nuts                    | No |
| Fish                                 | No | Pistachio nuts                | No |
| Lupin                                | No | Walnuts                       | No |
| Milk                                 | No | Peanuts                       | No |
| Molluscs                             | No | Sesame Seeds                  | No |
|                                      |    | Soybeans                      | No |
|                                      |    | Sulphur Dioxide and Sulphites | No |

SUPPLEMENTARY  
INGREDIENT  
INFORMATION

|                                |    |
|--------------------------------|----|
| Palm Oil                       | No |
| Hydrogenated Vegetable Oil/Fat | No |
| GM Protein/DNA                 | No |

ADDITIVES

*Product Contains:*

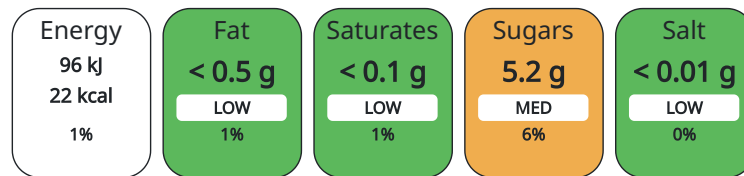
|                              |     |                          |    |
|------------------------------|-----|--------------------------|----|
| Artificial Antioxidants      | Yes | Artificial Flavourings   | No |
| Artificial Colours           | No  | Artificial Preservatives | No |
| Artificial Flavour Enhancers | No  | Artificial Sweeteners    | No |

DIET SUITABILITY

|            |              |                 |              |
|------------|--------------|-----------------|--------------|
| Vegan Diet | Suitable for | Vegetarian Diet | Suitable for |
| Halal Diet | No           | Kosher Diet     | No           |

NUTRITIONAL  
INFORMATION AS  
SOLD

Each 100g/ml portion contains:



of your reference intake.

Typical values per 100g/ml : Energy 22kcal / 96kJ

| Nutrient           | per 100ml | RI per 100ml |
|--------------------|-----------|--------------|
| Energy (kJ)        | 96 kJ     | 1%           |
| Energy (kcal)      | 22 kcal   | 1%           |
| Fat                | < 0.5 g   | 1%           |
| of which Saturates | < 0.1 g   | 1%           |
| Carbohydrate       | 5.7 g     | 2%           |
| of which Sugars    | 5.2 g     | 6%           |
| Fibre              | < 0.5 g   |              |
| Protein            | < 0.5 g   | 1%           |
| Salt               | < 0.01 g  | 0%           |

HANDLING &  
STORAGE  
INFORMATION

Directions For Use

Oral consumption

Storage Instructions

Store in cool dry conditions away from strong light sources. Best served chilled and shake well before use. Once opened keep in the fridge and consume within 3 days.

Shelf Life from Time of Production 210 Days

ACCREDITATIONS/  
CERTIFICATIONS/  
ASSURANCE  
SCHEMES  
ORIGIN

BRCGS Certified Other Accreditation

Product Country of Origin Not Specified

Additional Origin Details

various

Origin of the Primary Ingredient Not Applicable

PRODUCT  
CHARACTERISTICS

Standards Testing

|   |     |                                   |     |
|---|-----|-----------------------------------|-----|
| Do you undertake trend analysis of microbiological results? | Yes | Is shelf life testing undertaken? | Yes |
|---|-----|-----------------------------------|-----|

Microbiological Standards

| Organism                               | Description   | Frequency       | Target  | Maximum                    | Sample (g or ml) |            |           |
|--|---|-----------------|---------|----------------------------|------------------|------------|-----------|
| Total Viable Count (TVC) (cfu/g or ml) |   | Every Batch     | <1      | 0                          | 5                |            |           |
| Yeast (cfu/g or ml)                    |   | Every Batch     | <1      | 0                          | 5                |            |           |
| Moulds (cfu/g or ml)                   |   | Every Batch     | <1      | 0                          | 5                |            |           |
| Analytical Standards                   |   |                 |         |                            |                  |            |           |
| Test                                   | Description   | Frequency       | Target  | Range                      | Sample (g or ml) |            |           |
| Acidity (%)                            |   | Every Batch     | =0.21   | 0.19 to 0.23               | 10               |            |           |
| Brix (°Bx)                             |   | Every Batch     | =6.0    | 5.8 to 6.2                 | 1                |            |           |
| pH                                     |   | Every Batch     | <4      | 0 to 4                     | 500              |            |           |
| CONFIGURATION                          | Case Configuration                                      |                 |         | Inner Pack Configuration   |                  |            |           |
|  | <b>Total Quantity of Inner Components in Outer Case</b> | 12 Units        |         |                            |                  |            |           |
| PRODUCT WEIGHTS                        | <b>Is the Outer Case Splittable?</b>                    | Yes             |         |                            |                  |            |           |
|  | Inner Component   |                 |         |                            |                  |            |           |
|  | <b>Inner Component Volume</b>                           | 500 ml          |         |                            |                  |            |           |
|  | Outer Case  |                 |         |                            |                  |            |           |
| PRODUCT DIMENSIONS                     | <b>Outer Case Gross Weight</b>                          | 6.6 kg          |         |                            |                  |            |           |
|  | <b>Outer Case Net Weight</b>                            | 6.24 kg         |         |                            |                  |            |           |
|  | Inner Component   |                 |         |                            |                  |            |           |
|  | <b>Inner Component Depth</b>                            | 187 mm          |         |                            |                  |            |           |
|  | <b>Inner Component Width</b>                            | 66 mm           |         |                            |                  |            |           |
|  | <b>Inner Component Height</b>                           | 66 mm           |         |                            |                  |            |           |
|  | Outer Case  |                 |         |                            |                  |            |           |
|  | <b>Outer Case Depth</b>                                 | 269 mm          |         |                            |                  |            |           |
|  | <b>Outer Case Width</b>                                 | 204 mm          |         |                            |                  |            |           |
|  | <b>Outer Case Height</b>                                | 192 mm          |         |                            |                  |            |           |
| PALLET INFORMATION                     | <b>Quantity of Cases Per Pallet Layer</b>               | 22 Cases        |         | <b>Pallet Height</b>       | 1.32 MTR         |            |           |
|  | <b>Quantity of Layers Per Pallet</b>                    | 6 Layers        |         | <b>Pallet Gross Weight</b> | 903 kg           |            |           |
|  | <b>Quantity of Cases Per Pallet</b>                     | 132 Cases       |         |                            |                  |            |           |
| PACKAGING                              | Inner Component Packaging                               |                 |         |                            |                  |            |           |
|  | Type  | Materials       | Weight  | Recycled Material %        | Recyclable       | Returnable | Composite |
|  | Bottle  | Plastic         | 24.3 g  |                            |                  |            |           |
|  | Outer Case Packaging                                    |                 |         |                            |                  |            |           |
|  | Type  | Materials       | Weight  | Recycled Material %        | Recyclable       | Returnable | Composite |
|  | Case  | Plastic         | 20 g    |                            |                  |            |           |
|  | Case  | Paper/Cardboard | 1 g     |                            |                  |            |           |
|  | Transport Packaging                                     |                 |         |                            |                  |            |           |
|  | Type  | Materials       | Weight  | Recycled Material %        | Recyclable       | Returnable | Composite |
|  | Other   | Plastic         | 500 g   |                            |                  |            |           |
|  | Other   | Paper/Cardboard | 1000 g  |                            |                  |            |           |
|  | Other   | Wood            | 35000 g |                            |                  |            |           |

OTHER  
INFORMATION

**Manufacturer Comments**

It provides 1 of your 5 daily portions of fruit and vegetables No Added Sugar (Contains naturally occurring sugars) No artificial colours, flavours, sweeteners or preservatives Bottled in UK

CONTACT  
INFORMATION

**Address**

Purity Soft Drinks Ltd  
Douglas House  
Mounts Road  
WS10 0BU  
Wednesbury  
West Midlands  
England

nicole@puritysoftdrinks.co.uk  
01215057585

The information on the [Erudus System](#) has been supplied by the manufacturers of the products and, whilst the owners of the Erudus System take steps to ensure the information is regularly updated, they give no warranty and no guarantee that the information is accurate. Product information and ingredients may change, please always read product labels carefully in addition to using the information provided by Erudus.

We do not accept liability for any inaccuracies or incorrect information contained on this site.  
Please visit <http://www.erudus.com/terms-and-conditions> for full terms and conditions.