

Changed Oct 10, 2024 07:46

Reviewed Oct 10, 2024 07:46

Erudus ID 875acfc399a94b7596dfa259a3d7b449

Version 2.0

Status Published

19418

MIKADO 39G CHOC BISCUIT 24CA

Mikado 39g Choc Biscuit 24x39g

PRODUCT DESCRIPTION

BISCUITS COATED WITH MILK CHOCOLATE (49 %).

Brand	Mondelez UK Ltd
Manufacturer Product Code	750535
Product Type	Food
Product Category	Confectionery
Storage Type	Ambient
Erudus ID	875acfc399a94b7596dfa259a3d7b449
Specification Type	Generic

Inner Component GTIN 03017760628198

Outer Case GTIN 07622300314385



INGREDIENTS

Ingredient Declaration

WHEAT flour, sugar, cocoa butter, cocoa mass, skimmed MILK powder, whey powder (from MILK), vegetable fats (palm, coconut), MILK fat, salt, emulsifiers (SOYA lecithins, E476), raising agent (E503), yeast, flavouring.

ALLERGENS

Product Contains:

Celery/Celeriac	No	Mustard	No
Cereals Containing Gluten	Yes	Nuts (Tree)	No
Barley	No	Almond nuts	No
Oats	No	Brazil nuts	No
Rye	No	Cashew nuts	No
Wheat (including Spelt and Khorasan)	Yes	Hazelnuts	No
Crustacea	No	Macadamia (Queensland) nuts	No
Eggs	No	Pecan nuts	No
Fish	No	Pistachio nuts	No
Lupin	No	Walnuts	No
Milk	Yes	Peanuts	No
Molluscs	No	Sesame Seeds	No
		Soybeans	Yes
		Sulphur Dioxide and Sulphites	No

SUPPLEMENTARY INGREDIENT INFORMATION

Palm Oil	Yes
Hydrogenated Vegetable Oil/Fat	No
GM Protein/DNA	No

ADDITIVES

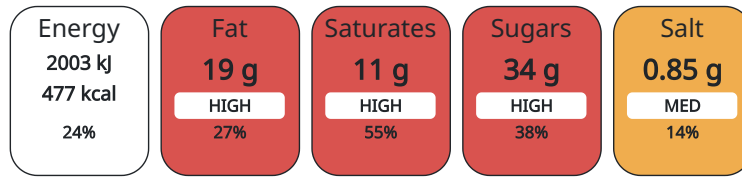
Product Contains:

DIET SUITABILITY

Vegan Diet	No	Vegetarian Diet	Suitable for
Halal Diet	No	Kosher Diet	No

NUTRITIONAL INFORMATION AS SOLD

Each 100g/ml portion contains:



of your reference intake.

Typical values per 100g/ml : Energy 477kcal / 2003kJ

Nutrient	per 100g	RI per 100g
Energy (kJ)	2003 kJ	24%
Energy (kcal)	477 kcal	24%
Fat	19 g	27%
of which Saturates	11 g	55%
Carbohydrate	67 g	26%
of which Sugars	34 g	38%
Fibre	2.8 g	
Protein	7.7 g	15%
Salt	0.85 g	14%

Serving Size Description 1 pack ≈ 17 biscuits.

HFSS (HIGH IN FAT, SALT AND SUGAR)

HFSS Status	Yes
HFSS Score	23

HANDLING & STORAGE INFORMATION

Directions For Use

Ready To Eat

Storage Instructions

STORE IN A DRY PLACE. PROTECT FROM HEAT.

Shelf Life from Time of Production 365 Days

ORIGIN

Product Country of Origin France

Origin of the Primary Ingredient

PRODUCT CHARACTERISTICS CONFIGURATION

Standards Testing

Case Configuration

Inner Pack Configuration

Total Quantity of Inner Components in 24 Units

Outer Case

PRODUCT WEIGHTS

Inner Component

Variable Weight Consumer Item No

Inner Component Weight 39 g

Outer Case

Outer Case Gross Weight 1.26 kg

Outer Case Net Weight 0.94 kg

PRODUCT DIMENSIONS

Inner Component	
Inner Component Depth	20 mm
Inner Component Width	61 mm
Inner Component Height	144 mm
Outer Case	
Outer Case Depth	196 mm
Outer Case Width	176 mm
Outer Case Height	150 mm

PALLET INFORMATION

Quantity of Cases Per Pallet Layer	24 Cases	Pallet Type	Euro Pallet
Quantity of Layers Per Pallet	7 Layers	Pallet Height	1.2 MTR
Quantity of Cases Per Pallet	168 Cases	Pallet Gross Weight	211.48 kg

PACKAGING

Inner Component Packaging						
Type	Materials	Weight	Recycled Material %	Recyclable	Returnable	Composite
Box	Paper/Cardboard	207.12 g				
Box	Aluminium	21.12 g				
Outer Case Packaging						
Type	Materials	Weight	Recycled Material %	Recyclable	Returnable	Composite
Case	Paper/Cardboard	110.14 g				

OTHER INFORMATION CONTACT INFORMATION

Address

Mondelez UK Ltd
 PO Box 12
 Bournville Lane
 B30 2LU
 Bournville
 Birmingham
 England

thomas.brooks@mdlz.com
 +44 1214 582 000

Technical

Tomas Sakalik
 tomas.sakalik@mdlz.com
 Publication Expert

The information on the [Erudus System](#) has been supplied by the manufacturers of the products and, whilst the owners of the Erudus System take steps to ensure the information is regularly updated, they give no warranty and no guarantee that the information is accurate. Product information and ingredients may change, please always read product labels carefully in addition to using the information provided by Erudus.

We do not accept liability for any inaccuracies or incorrect information contained on this site. Please visit <http://www.erudus.com/terms-and-conditions> for full terms and conditions.