

Changed Nov 12, 2024 17:19

Reviewed Nov 12, 2024 17:19

Erudus ID d2717da7c4034216952e90fcc15e89b0

Version 1.0

Status Published

19446

Milky Way MAGIC STARS 36x33g UK IE

Milky Way Magic Stars Choc Bag 33g 36x0.03kg

PRODUCT DESCRIPTION

Bite Size Chocolate

Brand	Mars
Manufacturer Product Code	462080
Product Type	Food
Product Category	Confectionery
Storage Type	Ambient
Erudus ID	d2717da7c4034216952e90fcc15e89b0
Specification Type	Generic

Inner Component GTIN 5900951313134

Outer Case GTIN 5900951313141



INGREDIENTS

Ingredient Declaration

Sugar, Cocoa Butter, Skimmed MILK Powder, Cocoa Mass, Whey Permeate (MILK), MILK Fat, Emulsifier (SOYA Lecithin), Palm Fat, Milk Chocolate contains Milk Solids 14% minimum and Cocoa Solids 25% minimum

Ingredient Statements

Milk Chocolate contains Milk Solids 14% minimum and Cocoa Solids 25% minimum

ALLERGENS

Product Contains:

Celery/Celeryiac	No	Mustard	No
Cereals Containing Gluten	No	Nuts (Tree)	May Contain
Barley	No	Almond nuts	May Contain
Oats	No	Brazil nuts	May Contain
Rye	No	Cashew nuts	May Contain
Wheat (including Spelt and Khorasan)	No	Hazelnuts	May Contain
Crustacea	No	Macadamia (Queensland) nuts	May Contain
Eggs	No	Pecan nuts	May Contain
Fish	No	Pistachio nuts	May Contain
Lupin	No	Walnuts	May Contain
Milk	Yes	Peanuts	May Contain
Molluscs	No	Sesame Seeds	No
		Soybeans	Yes
		Sulphur Dioxide and Sulphites	No

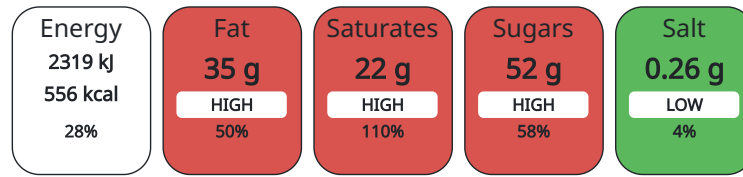
Risk Source:

SUPPLEMENTARY
INGREDIENT
INFORMATION
ADDITIVES

GM Protein/DNA No

Product Contains:

Each 100g/ml portion contains:



of your reference intake.

Typical values per 100g/ml : Energy 556kcal / 2319kJ

Nutrient	per 100g	RI per 100g
Energy (kJ)	2319 kJ	28%
Energy (kcal)	556 kcal	28%
Fat	35 g	50%
of which Saturates	22 g	110%
Carbohydrate	53 g	20%
of which Sugars	52 g	58%
Protein	7.2 g	14%
Salt	0.26 g	4%

HANDLING &
STORAGE
INFORMATION

Directions For Use

Ready to eat

Storage Instructions

Keep cool and dry

Shelf Life from Time of Production 364 Days

ORIGIN

Product Country of Origin Poland

Origin of the Primary Ingredient

PRODUCT
CHARACTERISTICS
CONFIGURATION

Standards Testing

Case Configuration

Inner Pack Configuration

Total Quantity of Inner Components in 36 Units

Outer Case

PRODUCT
WEIGHTS

Inner Component

Variable Weight Consumer Item No

Inner Component Weight 0.03 kg

Outer Case

Outer Case Gross Weight 1.39 kg

Outer Case Net Weight 1.19 kg

PRODUCT DIMENSIONS

Inner Component	
Inner Component Depth	0 mm
Inner Component Width	0 mm
Inner Component Height	0 mm
Outer Case	
Outer Case Depth	268 mm
Outer Case Width	230 mm
Outer Case Height	100 mm

PALLET INFORMATION

Quantity of Cases Per Pallet Layer	18 Cases	Pallet Height	1.66 MTR
Quantity of Layers Per Pallet	15 Layers	Pallet Gross Weight	407.95 kg
Quantity of Cases Per Pallet	270 Cases		

OTHER INFORMATION CONTACT INFORMATION

Address

Mars
3d Dundee Road
SL1 4LG
Slough
United Kingdom

adrian.holdstock@effem.com

Technical

Sharon Day
sharon.day@effem.com

The information on the [Erudus System](#) has been supplied by the manufacturers of the products and, whilst the owners of the Erudus System take steps to ensure the information is regularly updated, they give no warranty and no guarantee that the information is accurate. Product information and ingredients may change, please always read product labels carefully in addition to using the information provided by Erudus.

We do not accept liability for any inaccuracies or incorrect information contained on this site.
Please visit <http://www.erudus.com/terms-and-conditions> for full terms and conditions.