

Changed Nov 15, 2024 11:12

Reviewed Nov 15, 2024 11:12

Erudus ID 5f14d8e24c0b4de0a65ad063d0411305

Version 2.0

Status Published

19466

# GLXY MIN MP 12x3x42g GB IE

Galaxy Minstrels Bag Mpack 3x42g 12x0.13kg

## PRODUCT DESCRIPTION

Bite Size Chocolate

Brand	<a href="#">Mars</a>
Manufacturer Product Code	253316
Product Type	Food
Product Category	Confectionery
Storage Type	Ambient
Erudus ID	5f14d8e24c0b4de0a65ad063d0411305
Specification Type	Generic

Inner Component GTIN	5000159438544
Outer Case GTIN	05000159436878



## INGREDIENTS

### Ingredient Declaration

Sugar, Skimmed MILK Powder, Cocoa Butter, Cocoa Mass, Whey Permeate (MILK), Palm Fast, MILK Fat, Emulsifier (SOYA Lecithin), Dextrin, Colours (Curcumin, Vegetable Carbon, Beetroot Red), Starch, Glazing Agent (Carnauba Wax), Palm Kernel Oil, Milk Chocolate contains Milk Solids 14% minimum, Milk Chocolate contains Vegetable Fats in addition to Cocoa Butter

### Ingredient Statements

Milk Chocolate contains Milk Solids 14% minimum. Milk Chocolate contains vegetable fats in addition to coca butter.

## ALLERGENS

Product Contains:

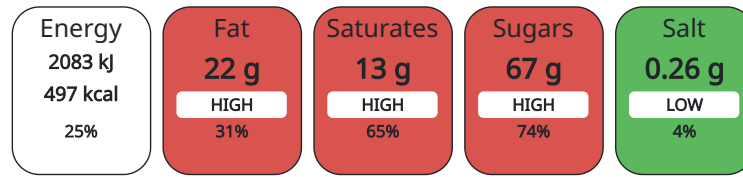
Celery/Celery	No	Mustard	No
Cereals Containing Gluten	No	Nuts (Tree)	No
Barley	No	Almond nuts	No
Oats	No	Brazil nuts	No
Rye	No	Cashew nuts	No
Wheat (including Spelt and Khorasan)	No	Hazelnuts	No
Crustacea	No	Macadamia (Queensland) nuts	No
Eggs	No	Pecan nuts	No
Fish	No	Pistachio nuts	No
Lupin	No	Walnuts	No
Milk	Yes	Peanuts	No
Molluscs	No	Sesame Seeds	No
		Soybeans	Yes
		Sulphur Dioxide and Sulphites	No

SUPPLEMENTARY  
INGREDIENT  
INFORMATION  
ADDITIVES

**GM Protein/DNA** No

*Product Contains:*

Each 100g/ml portion contains:



of your reference intake.

Typical values per 100g/ml : Energy 497kcal / 2083kJ

Nutrient	per 100g	RI per 100g
Energy (kJ)	2083 kJ	25%
Energy (kcal)	497 kcal	25%
Fat	22 g	31%
of which Saturates	13 g	65%
Carbohydrate	68 g	26%
of which Sugars	67 g	74%
Protein	5.8 g	12%
Salt	0.26 g	4%

HANDLING &  
STORAGE  
INFORMATION

**Directions For Use**

Ready to eat

**Storage Instructions**

Keep cool and dry

**Shelf Life from Time of Production** 364 Days

ORIGIN

**Product Country of Origin** United Kingdom

**Origin of the Primary Ingredient**

PRODUCT  
CHARACTERISTICS  
CONFIGURATION

Standards Testing

Case Configuration

Inner Pack Configuration

**Total Quantity of Inner Components in** 12 Units

**Outer Case**

PRODUCT  
WEIGHTS

Inner Component

**Variable Weight Consumer Item** No

**Inner Component Weight** 0.13 kg

Outer Case

**Outer Case Gross Weight** 1.88 kg

**Outer Case Net Weight** 1.51 kg

PRODUCT DIMENSIONS

Inner Component	
<b>Inner Component Depth</b>	0 mm
<b>Inner Component Width</b>	0 mm
<b>Inner Component Height</b>	0 mm
Outer Case	
<b>Outer Case Depth</b>	300 mm
<b>Outer Case Width</b>	200 mm
<b>Outer Case Height</b>	147 mm

PALLET INFORMATION

<b>Quantity of Cases Per Pallet Layer</b>	20 Cases	<b>Pallet Height</b>	1.63 MTR
<b>Quantity of Layers Per Pallet</b>	10 Layers	<b>Pallet Gross Weight</b>	406.44 kg
<b>Quantity of Cases Per Pallet</b>	200 Cases		

OTHER INFORMATION CONTACT INFORMATION

**Address**

Mars  
3d Dundee Road  
SL1 4LG  
Slough  
United Kingdom

adrian.holdstock@effem.com

**Technical**

Sharon Day  
sharon.day@effem.com

The information on the [Erudus System](#) has been supplied by the manufacturers of the products and, whilst the owners of the Erudus System take steps to ensure the information is regularly updated, they give no warranty and no guarantee that the information is accurate. Product information and ingredients may change, please always read product labels carefully in addition to using the information provided by Erudus.

We do not accept liability for any inaccuracies or incorrect information contained on this site.  
Please visit <http://www.erudus.com/terms-and-conditions> for full terms and conditions.