

Changed May 13, 2024 07:47

Reviewed May 13, 2024 07:47

Erudus ID e6eeffcb2dd49c099a522b4d03a8416

Version 1.0

Status Published

19506

# Monster Energy Ultra Strawberry Dreams 500ml x12

Monster Energy Ultra Strawberry Dreams 12x0.5kg

## PRODUCT DESCRIPTION

Monster Energy Ultra Strawberry Dreams 500ml x12 Can

Brand	<a href="#">Coca-Cola</a>
Manufacturer Product Code	643215
Product Type	Drink
Product Category	Drinks - General
Storage Type	Ambient
Erudus ID	e6eeffcb2dd49c099a522b4d03a8416
Specification Type	Drinks

Inner Component GTIN 05061013944199

Outer Case GTIN 05061013944236



## INGREDIENTS

### Ingredient Declaration

INGREDIENTS: CARBONATED WATER, FLAVOUR ENHANCER (ERYTHRITOL), ACID (CITRIC ACID), TAURINE (0.4%), ACIDITY REGULATOR (SODIUM CITRATES), NATURAL STRAWBERRY FLAVOURING WITH OTHER NATURAL FLAVOURINGS, PANAX GINSENG ROOT EXTRACT (0.08%), PRESERVATIVES (POTASSIUM SORBATE, SODIUM BENZOATE), CAFFEINE (0.03%), SWEETENERS (SUCRALOSE, ACESULFAME K), L-CARNITINE L-TARTRATE (0.015%), VITAMINS (B3, B5, B6, B12), STABILISER (GLYCEROL ESTERS OF WOOD ROSINS), GUARANA SEED EXTRACT (0.002%), INOSITOL, COLOURS (E129, E110, E133).

ALLERGENS

Product Contains:

Celery/Celeriac	No	Mustard	No
Cereals Containing Gluten	No	Nuts (Tree)	No
Barley	No	Almond nuts	No
Oats	No	Brazil nuts	No
Rye	No	Cashew nuts	No
Wheat (including Spelt and Khorasan)	No	Hazelnuts	No
Crustacea	No	Macadamia (Queensland) nuts	No
Eggs	No	Pecan nuts	No
Fish	No	Pistachio nuts	No
Lupin	No	Walnuts	No
Milk	No	Peanuts	No
Molluscs	No	Sesame Seeds	No
		Soybeans	No
		Sulphur Dioxide and Sulphites	No

SUPPLEMENTARY INGREDIENT INFORMATION

Palm Oil	No
Hydrogenated Vegetable Oil/Fat	No
GM Protein/DNA	No

ADDITIVES

Product Contains:

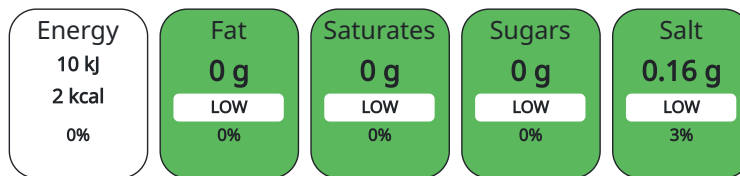
Artificial Antioxidants	No	Artificial Flavourings	No
Artificial Colours	Yes	Artificial Preservatives	Yes
Artificial Flavour Enhancers	No	Artificial Sweeteners	Yes

DIET SUITABILITY

Vegan Diet	Suitable for	Vegetarian Diet	Suitable for
Halal Diet	Suitable for	Kosher Diet	Suitable for

NUTRITIONAL INFORMATION AS SOLD

Each 100g/ml portion contains:



of your reference intake.

Typical values per 100g/ml : Energy 2kcal / 10kj

Nutrient	per 100ml	RI per 100ml
Energy (kJ)	10 kJ	0%
Energy (kcal)	2 kcal	0%
Fat	0 g	
of which Saturates	0 g	
Carbohydrate	0.8 g	0%
of which Sugars	0 g	
Protein	0 g	
Salt	0.16 g	3%

HFSS (HIGH IN FAT, SALT AND SUGAR)

HFSS Status	Yes
HFSS Score	0

HANDLING & STORAGE INFORMATION

**Directions For Use**

Best served chilled.

**Storage Instructions**

Store in a cool dry place.

**Shelf Life from Time of Production** 720 Days

ORIGIN

**Product Country of Origin** Great Britain

**Origin of the Primary Ingredient**

PRODUCT CHARACTERISTICS CONFIGURATION

Standards Testing

Case Configuration

Inner Pack Configuration

**Total Quantity of Inner Components in** 12 Units

**Outer Case**

**Is the Outer Case Splittable?** No

PRODUCT WEIGHTS

Inner Component

**Inner Component Weight** 0.5 kg

**Net Drained Weight** 0.52 g

Outer Case

**Outer Case Gross Weight** 6.29 kg

**Outer Case Net Weight** 6.03 kg

PRODUCT DIMENSIONS

Inner Component

**Inner Component Depth** 66.5 mm

**Inner Component Width** 65.5 mm

**Inner Component Height** 168 mm

Outer Case

**Outer Case Depth** 271 mm

**Outer Case Width** 205 mm

**Outer Case Height** 171 mm

PALLET INFORMATION

**Quantity of Cases Per Pallet Layer** 22 Cases

**Pallet Height** 1.53 MTR

**Quantity of Layers Per Pallet** 8 Layers

**Pallet Gross Weight** 1138.53 kg

**Quantity of Cases Per Pallet** 176 Cases

PACKAGING

Inner Component Packaging

Type	Materials	Weight	Recycled Material %	Recyclable	Returnable	Composite
Can	Aluminium	0.19 g				

Outer Case Packaging

Type	Materials	Weight	Recycled Material %	Recyclable	Returnable	Composite
Case	Plastic	16.99 g				
Case	Paper/Cardboard	55.44 g				

OTHER INFORMATION

CONTACT  
INFORMATION

**Address**

Coca-Cola  
Coca-Cola Europacific Partners Great Britain Limited  
Pemberton House, Bakers Road  
UB8 1EZ  
Uxbridge  
United Kingdom

contact@ccep.com  
08081000000

**Technical**

Data Queries  
npidataexchange@ccep.com

The information on the [Erudus System](#) has been supplied by the manufacturers of the products and, whilst the owners of the Erudus System take steps to ensure the information is regularly updated, they give no warranty and no guarantee that the information is accurate. Product information and ingredients may change, please always read product labels carefully in addition to using the information provided by Erudus.

We do not accept liability for any inaccuracies or incorrect information contained on this site.  
Please visit <http://www.erudus.com/terms-and-conditions> for full terms and conditions.