

19523

Appletiser 250ml x24

Appletiser 24x0.27kg

PRODUCT DESCRIPTION

Appletiser 250ml x24 Can

Brand	Coca-Cola
Manufacturer Product Code	458941
Product Type	Drink
Product Category	Drinks - General
Storage Type	Ambient
Erudus ID	75f4749b4a4f4ca6b6f6ee627e94a2d0
Specification Type	Legacy



Outer Case GTIN 5017726143343



INGREDIENTS

Ingredient Declaration

Carbonated Apple Juice From Concentrate (100%).

ALLERGENS

Product Contains:

Celery/Celeriac	No	Mustard	No
Cereals Containing Gluten	No	Nuts (Tree)	No
Barley	No	Almond nuts	No
Oats	No	Brazil nuts	No
Rye	No	Cashew nuts	No
Wheat (including Spelt and Khorasan)	No	Hazelnuts	No
Gluten content <20ppm	Yes	Macadamia (Queensland) nuts	No
Crustacea	No	Pecan nuts	No
Eggs	No	Pistachio nuts	No
Fish	No	Walnuts	No
Lupin	No	Peanuts	No
Milk	No	Sesame Seeds	No
Molluscs	No	Soybeans	No
		Sulphur Dioxide and Sulphites	No

SUPPLEMENTARY INGREDIENT INFORMATION

Palm Oil	No
Hydrogenated Vegetable Oil/Fat	No
GM Protein/DNA	No

ADDITIVES

Product Contains:

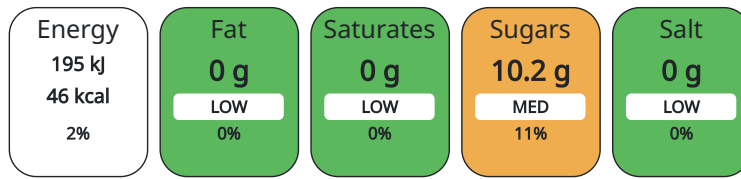
Artificial Antioxidants	No	Artificial Flavourings	Yes
Artificial Colours	No	Artificial Preservatives	No
Artificial Flavour Enhancers	No	Artificial Sweeteners	No

DIET SUITABILITY

Suitable for Coeliacs	Yes	Halal Diet	Suitable for
Kosher Diet	Suitable for	Vegetarian Diet	Suitable for
Vegan Diet	Suitable for		

NUTRITIONAL INFORMATION

Each 100g/ml portion contains:



of your reference intake.

Typical values per 100g/ml : Energy 46kcal / 195kJ

Nutrient	per 100g/ml	RI per 100g/ml
Energy (kJ)	195 kJ	2%
Energy (kcal)	46 kcal	2%
Fat	0 g	
of which Saturates	0 g	
Carbohydrate	10.8 g	4%
of which Sugars	10.2 g	11%
Protein	0 g	
Salt	0 g	

HANDLING & STORAGE INFORMATION

Directions For Use

Best served chilled. Refrigerate after opening and consume within 4 days.

Storage Instructions

Store on a cool dry place.

Shelf Life from Time of Production	360 Days
---	----------

ORIGIN

Product Country of Origin	Great Britain
----------------------------------	---------------

PRODUCT CHARACTERISTICS CONFIGURATION

Standards Testing	
Case Configuration	Inner Pack Configuration
Total Quantity of Inner Components in Outer Case	24 Units
Is the Outer Case Splittable?	No

PRODUCT WEIGHTS

Inner Component	
Variable Weight Consumer Item	No
Inner Component Weight	0.27 kg
Outer Case	
Outer Case Gross Weight	6.6 kg
Outer Case Net Weight	6.26 kg

PRODUCT DIMENSIONS

Inner Component	
Inner Component Depth	54 mm
Inner Component Width	54 mm
Inner Component Height	134 mm
Outer Case	
Outer Case Depth	326 mm
Outer Case Width	219 mm
Outer Case Height	137 mm

PALLET INFORMATION

Quantity of Cases Per Pallet Layer	16 Cases	Pallet Height	1.53 MTR
Quantity of Layers Per Pallet	10 Layers	Pallet Gross Weight	1085.87 kg
Quantity of Cases Per Pallet	160 Cases		

PACKAGING

Inner Component Packaging						
Type	Materials	Weight	Recycled Material %	Recyclable	Returnable	Composite
Can	Aluminium	10.4 g				
Outer Case Packaging						
Type	Materials	Weight	Recycled Material %	Recyclable	Returnable	Composite
Case	Plastic	18.67 g				
Case	Paper/Cardboard	49.8 g				

OTHER INFORMATION CONTACT INFORMATION

Address	Technical
Coca-Cola	Data Queries
Coca-Cola Europacific Partners Great Britain Limited	npidataexchange@ccep.com
Pemberton House, Bakers Road	
UB8 1EZ	
Uxbridge	
United Kingdom	
contact@ccep.com	
08081000000	

The information on the [Erudus System](#) has been supplied by the manufacturers of the products and, whilst the owners of the Erudus System take steps to ensure the information is regularly updated, they give no warranty and no guarantee that the information is accurate. Product information and ingredients may change, please always read product labels carefully in addition to using the information provided by Erudus.

We do not accept liability for any inaccuracies or incorrect information contained on this site. Please visit <http://www.erudus.com/terms-and-conditions> for full terms and conditions.